

Statistical Release

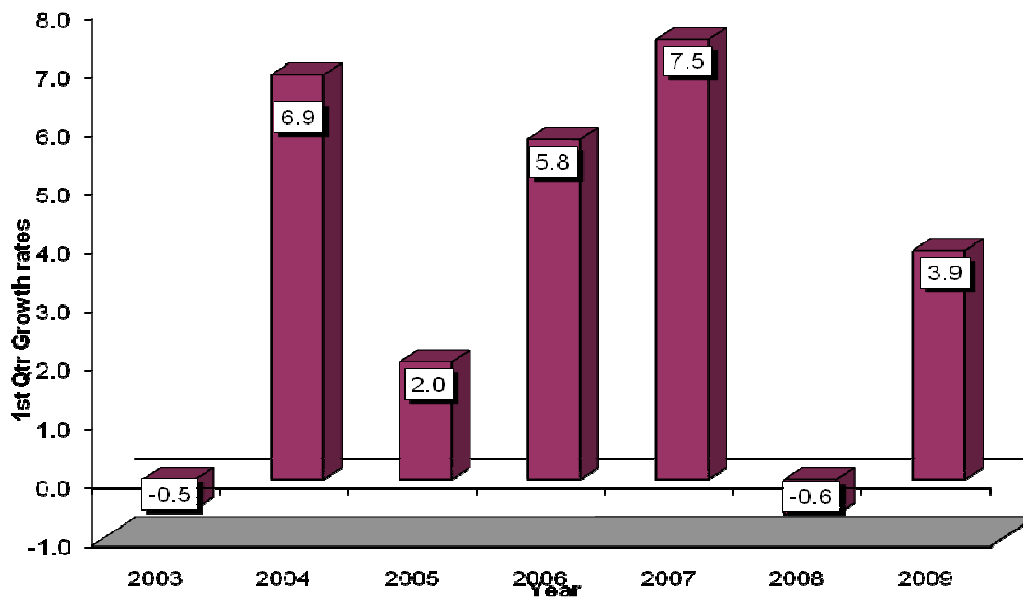
Gross Domestic Product First Quarter 2009

Economic Performance

Real Gross Domestic Product (GDP) for the first quarter of 2009 is estimated to have expanded by 3.9 per cent compared with a contraction of 0.6 per cent during a same quarter of 2008. The improved GDP growth is a signal of rebound of economic activities which remained subdued throughout 2008 on account of several factors resulting to a low base for the current quarter.

The growth in real GDP in the first quarter is primarily a culmination of rebound of activities in wholesale and retail trade, transport and communications, construction, and hotels and restaurants sectors which expanded by 4.6, 4.3, 30.7 and 59.0, respectively (see Table 2). In addition, agriculture and forestry recorded a smaller contraction of 0.9 per cent in the first quarter of 2009 compared to a substantial decline of 6.1 per cent in the same quarter of 2008 and therefore its impact on the overall growth was less detrimental.

Figure 1: Overall growth rates of the First Quarter



The economy also benefited from substantial drop in fuel prices during the quarter under review compared to a similar period of 2008. However, sluggish domestic demand, low investment and inflationary pressures restrained the economy from attaining its potential growth.

Hotels and restaurants, and construction recorded the most notable growths of 59.0 and 30.7 per cent during the first quarter of 2009 compared to a contraction of 53.3 per cent and growth of 3.9 per cent, respectively, during similar period in 2008. During the quarter, value added of mining and quarrying contracted by 7.9 per cent primarily due to substantial decline in production of soda ash.

Sectoral Analysis

Agriculture and Forestry

The unfavourable weather conditions caused by the insufficient rainfall continued to adversely affect the agricultural sector which is estimated to have recorded a slower decline of 0.9 per cent in the first quarter of 2009 compared to 6.1 per cent decline in the same period in 2008. This unfavourable weather conditions is expected to affect most agricultural output as key crops recorded declines apart from coffee and sugarcane.

Tea production declined by 7.0 per cent in the first quarter of 2009 to stand at 65,800 metric tonnes compared to 70,755 metric tonnes in 2008. Coffee production recorded a growth of 55.1 per cent over the same period to stand at 20,720 metric tonnes in the first quarter of 2009.

Exports of horticultural produce recorded mixed performance in the first quarter of 2009 with vegetables and cut flowers recording declines. Exports of cut flowers declined by 12.2 per cent to 24,410 metric tonnes in 2009 compared to 27,720 metric tonnes in 2008 while that of vegetables declined by 20.9 per cent to stand at 17,510 metric tonnes in 2009. However the exports of fruits increased significantly to 7,556 metric tonnes in 2009 compared to 4,442 metric tonnes in 2008 representing a growth of 70.1 per cent. Milk intake increased from 82.0 million litres in the first quarter of 2008 to 91.6 million litres in 2009 over the same period.

Manufacturing

The sector is estimated to have recorded a growth of 3.2 per cent in first quarter of 2009 compared to 2.6 per cent over the same period in 2008. Manufacture of food and beverage sub-sector recorded a growth of 4.7 per cent in the period under review with key contributors to this growth being manufacture of wheat flour, domestic sugar, soft drinks (including

mineral water) and beers among others. This sub-sector also witnessed declines in the manufactures of maize meal and cigarettes. All other manufacturing whose key indicators include cement production, manufacture of textiles clothing and footwear among others grew by 2.6 per cent in the period under review.

Electricity and Water

The sector is estimated to have declined by 1.8 per cent in the first quarter of 2009 compared to a growth 9.8 per cent in 2008. This decline is attributed to the reduction in generation of Hydro electricity which is the major source of power by 20.0 per cent in 2009 while that of thermal increasing by 19.9 per cent. However the total consumption of electricity increased marginally from 1,280 GWH in the first quarter of 2008 to 1,307 GWH over the same period in 2009.

Hotels and Restaurants

This sector which was adversely affected by the post election skirmishes in the first quarter of 2008 made a turnaround to record an impressive growth of 59.0 per cent in 2009 compared to a decline of 53.3 per cent in 2008. The growth is attributed to increase in international arrivals due to aggressive marketing abroad but it is yet reached the 2007 level.

Transport and Communication

The sector is estimated to have grown by 4.3 per cent in the first quarter of 2009 with the transport and storage sub-sector recording a growth of 4.2 per cent while the communication sub-sector recorded a growth of 4.5 per cent in the same period. The number of tourist arrivals and departures used to monitor the air transport increased by 40.0 per cent and 22.1 per cent in 2009, respectively.

Seasonally adjusted GDP

The seasonally adjusted GDP decreased by 0.8 per cent in the first quarter of 2009 compared to the fourth quarter of 2008 as shown in Table 2. This is an indication of a further decline in the growth of the economy in the first quarter of 2009 compared a similar decline in the fourth quarter of 2008. It should also be noticed that the seasonally adjusted series is somehow volatile.

Agriculture has a very strong impact on the seasonal pattern of GDP. This is clear when comparing the seasonally adjusted and unadjusted GDP (Figure 2) with the seasonally adjusted and non-adjusted “non-agricultural GDP” (Figure 3).

Figure 2: Movement of seasonally adjusted and unadjusted QGDP

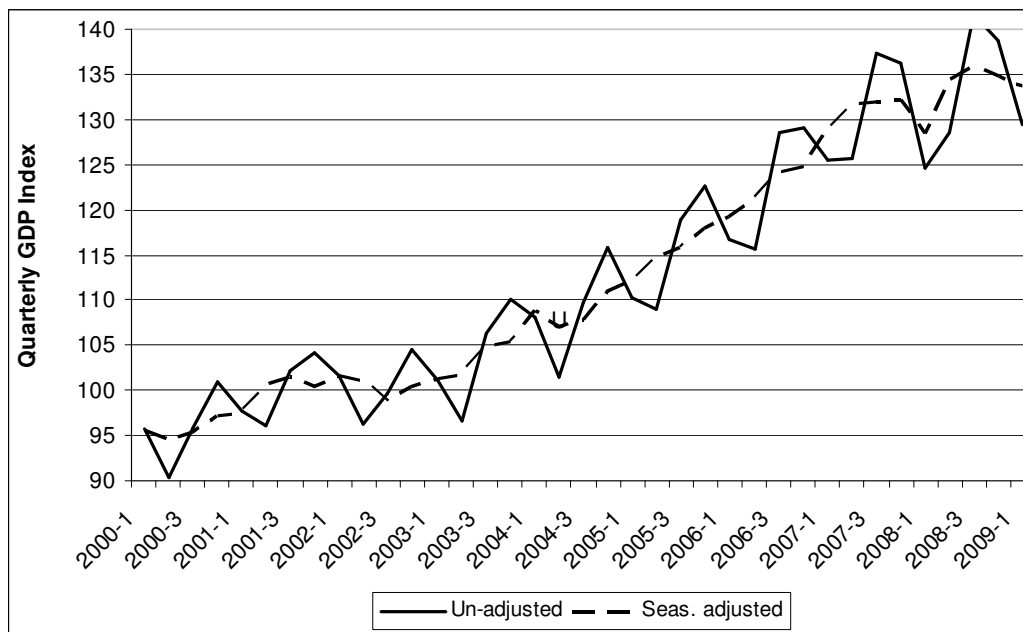


Figure 3: Movement of seasonally adjusted and unadjusted QGDP excluding agriculture

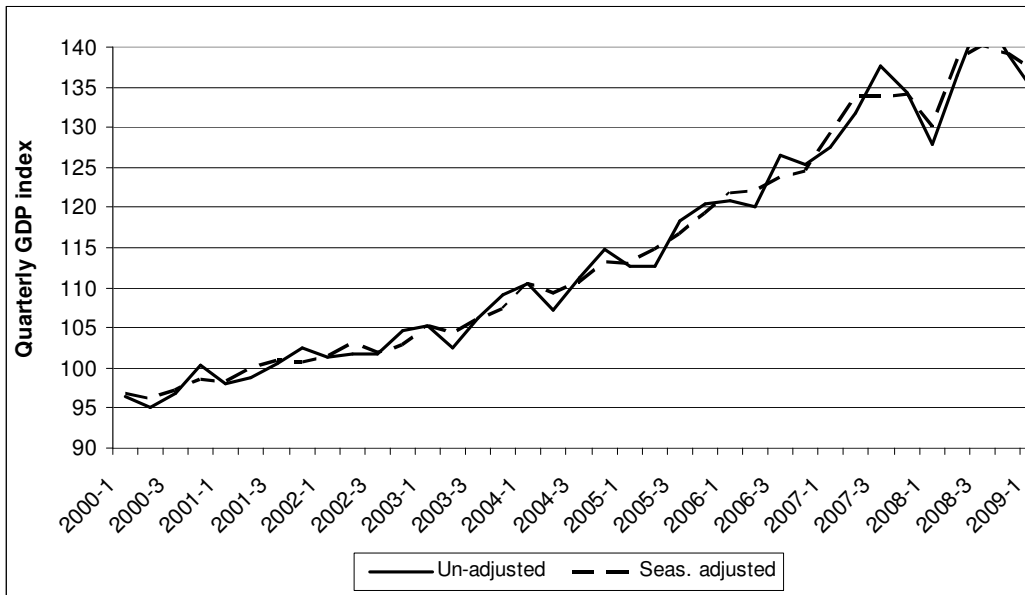


Table 1: Gross Domestic Product by Activity
Constant 2001 Prices –KSh. Million

Year	Quarter	Agriculture and forestry	Fishing	Mining and quarrying	Manufacturing	Electricity and water	Construction	Wholesale and retail trade	Hotels and restaurants	Transport and communication	Financial intermediation
2000		251,171	7,995	4,536	98,202	18,683	30,653	88,479	12,280	81,649	47,114
2001		277,592	6,532	4,915	99,777	19,671	31,829	93,531	11,864	92,932	42,124
2002		269,071	5,119	5,036	99,858	23,749	31,214	91,219	12,425	101,336	41,443
2003		276,089	4,765	5,213	105,822	27,074	31,530	92,604	9,899	104,915	42,064
2004		280,518	5,246	5,195	110,544	27,877	32,932	100,486	13,741	112,260	42,657
2005		299,749	5,751	5,335	115,698	27,862	35,401	106,091	15,572	122,316	45,030
2006		312,820	6,249	5,554	122,953	27,475	37,649	118,357	17,894	136,306	47,170
2007		319,153	6,588	6,272	130,892	29,987	40,229	131,989	20,814	156,849	50,319
2,008		302,731	6,791	6,472	135,802	31,556	43,572	138,677	13,298	161,722	51,868
2000	1	63,498	2,267	1,062	25,059	5,510	7,009	22,042	3,407	18,079	12,006
	2	54,167	1,763	1,176	23,833	5,173	8,127	20,721	2,511	18,852	11,876
	3	64,038	1,688	1,188	24,607	3,918	8,126	21,219	2,826	21,530	11,777
	4	69,469	2,277	1,109	24,703	4,082	7,390	24,497	3,535	23,189	11,455
2001	1	67,652	1,440	1,158	25,680	4,712	7,390	22,719	3,264	20,775	10,947
	2	60,318	1,830	1,301	25,040	4,701	8,927	21,425	2,453	22,933	10,677
	3	73,821	1,645	1,246	25,131	5,123	8,264	23,009	2,739	24,003	10,268
	4	75,801	1,617	1,210	23,925	5,136	7,247	26,378	3,409	25,220	10,231
2002	1	67,968	1,342	1,212	25,336	5,426	7,882	22,981	3,494	24,369	10,278
	2	57,658	985	1,275	24,828	5,999	8,098	22,219	2,618	25,895	10,234
	3	69,628	1,277	1,299	25,230	6,235	7,698	21,374	3,200	24,524	10,461
	4	73,816	1,516	1,250	24,464	6,089	7,536	24,645	3,114	26,548	10,471
2003	1	65,494	1,253	1,282	26,214	6,313	7,812	23,082	2,516	26,630	10,409
	2	58,961	928	1,359	25,875	6,694	8,389	21,238	2,064	23,322	10,364
	3	73,999	1,183	1,284	26,894	6,904	7,758	23,291	2,462	26,855	10,480
	4	77,634	1,401	1,287	26,839	7,163	7,570	24,994	2,857	28,107	10,810
2004	1	70,235	1,336	1,248	27,476	7,199	7,781	25,461	3,518	27,754	10,551
	2	59,043	1,186	1,331	26,912	7,057	8,519	22,623	2,694	25,587	10,559
	3	72,067	1,265	1,373	27,000	6,615	8,945	24,749	3,714	29,336	10,697
	4	79,172	1,458	1,243	29,157	7,007	7,687	27,652	3,816	29,583	10,851
2005	1	69,679	1,613	1,284	28,109	6,952	8,281	24,048	5,113	28,634	11,043
	2	64,193	1,054	1,284	28,932	6,904	8,505	25,205	3,034	28,142	11,158
	3	80,714	1,429	1,433	28,538	6,996	9,600	27,502	3,850	32,590	11,316
	4	85,164	1,655	1,334	30,119	7,010	9,015	29,336	3,575	32,951	11,513
2006	1	69,634	1,660	1,287	29,939	6,795	9,048	27,071	5,210	33,971	11,550
	2	67,540	1,105	1,327	30,166	6,808	8,997	28,498	3,384	33,253	11,777
	3	85,949	1,514	1,441	31,039	6,853	9,746	32,711	4,802	35,544	11,785
	4	89,697	1,970	1,499	31,809	7,018	9,858	30,077	4,498	33,538	12,057
2007	1	75,745	1,673	1,395	31,394	7,160	8,672	30,699	5,544	37,042	12,329
	2	68,738	1,170	1,570	32,480	7,603	9,928	32,773	4,735	38,944	12,594
	3	85,538	1,555	1,613	33,510	7,581	11,125	35,773	5,472	41,108	12,659
	4	89,132	2,189	1,694	33,509	7,643	10,504	32,744	5,064	39,754	12,737
2008	1	71,121	1,658	1,459	32,205	7,861	9,014	30,197	2,590	37,133	12,681
	2	67,429	1,208	1,674	33,965	7,990	11,218	34,216	2,984	39,166	12,966
	3	80,101	1,608	1,760	34,772	7,811	12,408	39,662	4,140	42,894	12,803
	4	84,080	2,316	1,579	34,860	7,894	10,932	34,602	3,584	42,529	13,418
2009	1	70,491	1,708	1,343	33,220	7,721	11,785	31,584	4,118	38,746	13,425

Table 1: Gross Domestic Product by Activity
Constant 2001 Prices – KSh. Million

Year	Quarter	Real estate, renting, business services	Public administration	Education	Other services	FISIM	All industries at basic prices	All industries excl. agriculture	Taxes on products	GDP at market prices	GDP, seasonally adjusted
2000		57,091	48,243	62,148	67,339	-12,479	863,105	611,933	113,232	976,337	
2001		58,667	46,760	63,013	69,424	-11,772	906,859	629,267	113,148	1,020,007	
2002		60,452	46,731	64,748	71,453	-10,665	913,190	644,119	112,394	1,025,584	
2003		61,864	46,991	71,045	72,203	-10,315	941,763	665,674	113,895	1,055,658	
2004		63,740	47,062	72,435	74,854	-10,800	978,746	698,229	130,795	1,109,541	
2005		65,882	46,460	72,963	77,089	-11,261	1,029,938	730,189	145,143	1,175,081	
2006		68,447	45,722	73,152	80,053	-11,835	1,087,964	775,144	161,367	1,249,331	
2007		70,860	44,788	75,855	82,648	-12,157	1,155,087	835,934	182,952	1,338,039	
2008		73,461	45,074	80,277	85,281	-11,250	1,165,332	862,601	195,294	1,360,626	
2000	1	14,018	12,105	15,593	16,738	-3,123	215,270	151,772	28,686	243,956	243,890
	2	14,338	12,120	15,561	16,777	-3,110	203,886	149,719	26,532	230,418	241,124
	3	14,293	12,068	15,521	16,854	-3,134	216,520	152,482	28,266	244,786	243,180
	4	14,442	11,949	15,474	16,970	-3,113	227,429	157,960	29,748	257,177	247,848
2001	1	14,521	11,798	15,784	17,124	-3,054	221,912	154,260	27,080	248,992	248,894
	2	14,643	11,676	15,689	17,279	-3,017	215,876	155,558	28,981	244,857	256,498
	3	14,872	11,629	15,706	17,433	-2,880	232,010	158,189	28,673	260,684	258,760
	4	14,630	11,657	15,834	17,588	-2,822	237,061	161,260	28,413	265,474	255,782
2002	1	14,493	11,679	16,050	17,742	-2,744	227,508	159,540	31,759	259,267	259,010
	2	15,025	11,672	16,086	17,853	-2,650	217,793	160,135	27,617	245,410	257,750
	3	15,462	11,679	16,205	17,918	-2,659	229,531	159,903	24,702	254,233	252,083
	4	15,472	11,701	16,407	17,940	-2,612	238,358	164,541	28,316	266,673	256,232
2003	1	15,353	11,733	17,715	17,939	-2,559	231,188	165,693	26,668	257,856	258,258
	2	15,952	11,752	17,769	17,975	-2,523	220,120	161,159	26,347	246,468	259,642
	3	14,964	11,757	17,788	18,069	-2,556	241,131	167,132	29,733	270,865	267,454
	4	15,594	11,749	17,773	18,221	-2,677	249,324	171,690	31,146	280,470	269,001
2004	1	15,693	11,744	18,113	18,465	-2,642	243,933	173,698	31,835	275,768	277,570
	2	16,403	11,767	18,055	18,650	-2,674	227,713	168,670	31,105	258,818	272,955
	3	15,566	11,777	18,080	18,806	-2,725	247,264	175,197	32,313	279,577	274,575
	4	16,077	11,774	18,187	18,933	-2,759	259,837	180,664	35,542	295,379	282,979
2005	1	16,059	11,627	18,215	19,052	-2,773	246,933	177,255	34,417	281,350	285,535
	2	16,695	11,593	18,230	19,183	-2,785	241,327	177,135	36,548	277,875	292,545
	3	16,639	11,615	18,248	19,338	-2,821	266,986	186,272	36,028	303,014	295,208
	4	16,489	11,626	18,270	19,516	-2,882	274,692	189,527	38,150	312,842	300,697
2006	1	16,888	11,618	18,236	19,748	-2,900	259,755	190,121	37,848	297,603	304,175
	2	16,888	11,541	18,199	19,934	-2,966	256,451	188,911	38,183	294,634	309,313
	3	16,744	11,392	18,271	20,106	-2,955	284,942	198,993	42,913	327,855	316,899
	4	17,926	11,171	18,446	20,264	-3,014	286,815	197,118	42,423	329,238	317,946
2007	1	17,157	11,206	19,083	20,407	-3,061	276,446	200,700	43,401	319,846	328,633
	2	17,840	11,388	18,906	20,567	-3,088	276,149	207,411	44,485	320,635	335,672
	3	18,287	11,261	18,875	20,742	-3,038	302,061	216,523	47,894	349,955	336,441
	4	17,576	10,932	18,991	20,932	-2,971	300,431	211,299	47,173	347,603	336,823
2008	1	17,191	11,079	19,898	21,139	-2,844	272,383	201,262	45,384	317,768	327,497
	2	19,665	11,340	20,006	21,294	-2,830	282,291	214,863	45,411	327,703	342,535
	3	19,481	11,325	20,123	21,398	-2,727	307,559	227,458	53,601	361,160	346,319
	4	17,124	11,330	20,251	21,449	-2,848	303,098	219,018	50,898	353,996	343,523
2009	1	17,424	11,322	20,825	21,670	-2,850	282,531	212,040	47,602	330,134	340,911

Table 2:Gross Domestic Product by Activity
Percentage Changes at Constant Prices 2001

Year	Quarter	Agriculture and forestry	Fishing	Mining and quarrying	Manufacturing	Electricity and water	Construction	Wholesale and retail trade	Hotels and restaurants	Transport and communication	Financial intermediation
2001		10.5	-18.3	8.4	1.6	5.3	3.8	5.7	-3.4	13.8	-10.6
2002		-3.1	-21.6	2.5	0.1	20.7	-1.9	-2.5	4.7	9.0	-1.6
2003		2.6	-6.9	3.5	6.0	14.0	1.0	1.5	-20.3	3.5	1.5
2004		1.6	10.1	-0.4	4.5	3.0	4.4	8.5	38.8	7.0	1.4
2005		6.9	9.6	2.7	4.7	-0.1	7.5	5.6	13.3	9.0	5.6
2006		4.4	8.7	4.1	6.3	-1.4	6.3	11.6	14.9	11.4	4.8
2007		2.0	5.4	12.9	6.5	9.1	6.9	11.5	16.3	15.1	6.7
2008		-5.1	3.1	3.2	3.8	5.2	8.3	5.1	-36.1	3.1	3.1
2001	1	6.5	-36.5	9.0	2.5	-14.5	5.4	3.1	-4.2	14.9	-8.8
	2	11.4	3.8	10.6	5.1	-9.1	9.8	3.4	-2.3	21.6	-10.1
	3	15.3	-2.5	4.9	2.1	30.8	1.7	8.4	-3.1	11.5	-12.8
	4	9.1	-29.0	9.1	-3.1	25.8	-1.9	7.7	-3.6	8.8	-10.7
2002	1	0.5	-6.8	4.6	-1.3	15.2	6.7	1.2	7.0	17.3	-6.1
	2	-4.4	-46.2	-2.0	-0.8	27.6	-9.3	3.7	6.7	12.9	-4.2
	3	-5.7	-22.4	4.2	0.4	21.7	-6.9	-7.1	16.8	2.2	1.9
	4	-2.6	-6.2	3.3	2.3	18.6	4.0	-6.6	-8.6	5.3	2.3
2003	1	-3.6	-6.6	5.8	3.5	16.4	-0.9	0.4	-28.0	9.3	1.3
	2	2.3	-5.8	6.6	4.2	11.6	3.6	-4.4	-21.1	-9.9	1.3
	3	6.3	-7.4	-1.1	6.6	10.7	0.8	9.0	-23.1	9.5	0.2
	4	5.2	-7.6	2.9	9.7	17.6	0.5	1.4	-8.3	5.9	3.2
2004	1	7.2	6.7	-2.7	4.8	14.0	-0.4	10.3	39.8	4.2	1.4
	2	0.1	27.8	-2.1	4.0	5.4	1.5	6.5	30.5	9.7	1.9
	3	-2.6	7.0	6.9	0.4	-4.2	15.3	6.3	50.9	9.2	2.1
	4	2.0	4.1	-3.5	8.6	-2.2	1.5	10.6	33.6	5.2	0.4
2005	1	-0.8	20.7	2.9	2.3	-3.4	6.4	-5.6	45.3	3.2	4.7
	2	8.7	-11.1	-3.6	7.5	-2.2	-0.2	11.4	12.6	10.0	5.7
	3	12.0	13.0	4.4	5.7	5.8	7.3	11.1	3.7	11.1	5.8
	4	7.6	13.5	7.4	3.3	0.0	17.3	6.1	-6.3	11.4	6.1
2006	1	-0.1	2.9	0.2	6.5	-2.2	9.3	12.6	1.9	18.6	4.6
	2	5.2	4.8	3.3	4.3	-1.4	5.8	13.1	11.5	18.2	5.6
	3	6.5	6.0	0.6	8.8	-2.0	1.5	18.9	24.7	9.1	4.1
	4	5.3	19.1	12.4	5.6	0.1	9.4	2.5	25.8	1.8	4.7
2007	1	8.8	0.8	8.4	4.9	5.4	-4.2	13.4	6.4	9.0	6.7
	2	1.8	5.9	18.3	7.7	11.7	10.4	15.0	39.9	17.1	6.9
	3	-0.5	2.7	11.9	8.0	10.6	14.2	9.4	14.0	15.7	7.4
	4	-0.6	11.1	13.0	5.3	8.9	6.6	8.9	12.6	18.5	5.6
2008	1	-6.1	-0.9	4.6	2.6	9.8	3.9	-1.6	-53.3	0.2	2.9
	2	-1.9	3.3	6.7	4.6	5.1	13.0	4.4	-37.0	0.6	2.9
	3	-6.4	3.4	9.1	3.8	3.0	11.5	10.9	-24.3	4.3	1.1
	4	-5.7	5.8	-6.8	4.0	3.3	4.1	5.7	-29.2	7.0	5.3
2009	1	-0.9	3.0	-7.9	3.2	-1.8	30.7	4.6	59.0	4.3	5.9

Table 2: Gross Domestic Product by Activity
Percentage Changes at Constant Prices 2001

Year	Quarter	Real estate, renting, business services	Public administration	Education	Other services	FISIM	All industries at basic prices	All industries excl. agriculture	Taxes on products	GDP at market prices	GDP, seasonally adjusted
2001		2.8	-3.1	1.4	3.1	-5.7	5.1	2.8	-0.1	4.5	
2002		3.0	-0.1	2.8	2.9	-9.4	0.7	2.4	-0.7	0.5	
2003		2.3	0.6	9.7	1.0	-3.3	3.1	3.3	1.3	2.9	
2004		3.0	0.2	2.0	3.7	4.7	3.9	4.9	14.8	5.1	
2005		3.4	-1.3	0.7	3.0	4.3	5.2	4.6	11.0	5.9	
2006		3.9	-1.6	0.3	3.8	5.1	5.6	6.2	11.2	6.3	
2007		3.5	-2.0	3.7	3.2	2.7	6.2	7.8	13.4	7.1	
2008		3.7	0.6	5.8	3.2	-7.5	0.9	3.2	6.7	1.7	
2001	1	3.6	-2.5	1.2	2.3	-2.2	3.1	1.6	-5.6	2.1	0.4
	2	2.1	-3.7	0.8	3.0	-3.0	5.9	3.9	9.2	6.3	3.1
	3	4.1	-3.6	1.2	3.4	-8.1	7.2	3.7	1.4	6.5	0.9
	4	1.3	-2.4	2.3	3.6	-9.4	4.2	2.1	-4.5	3.2	-1.2
2002	1	-0.2	-1.0	1.7	3.6	-10.2	2.5	3.4	17.3	4.1	1.3
	2	2.6	0.0	2.5	3.3	-12.2	0.9	2.9	-4.7	0.2	-0.5
	3	4.0	0.4	3.2	2.8	-7.7	-1.1	1.1	-13.9	-2.5	-2.2
	4	5.8	0.4	3.6	2.0	-7.4	0.5	2.0	-0.3	0.5	1.6
2003	1	5.9	0.5	10.4	1.1	-6.7	1.6	3.9	-16.0	-0.5	0.8
	2	6.2	0.7	10.5	0.7	-4.8	1.1	0.6	-4.6	0.4	0.5
	3	-3.2	0.7	9.8	0.8	-3.9	5.1	4.5	20.4	6.5	3.0
	4	0.8	0.4	8.3	1.6	2.5	4.6	4.3	10.0	5.2	0.6
2004	1	2.2	0.1	2.2	2.9	3.3	5.5	4.8	19.4	6.9	3.2
	2	2.8	0.1	1.6	3.8	6.0	3.4	4.7	18.1	5.0	-1.7
	3	4.0	0.2	1.6	4.1	6.6	2.5	4.8	8.7	3.2	0.6
	4	3.1	0.2	2.3	3.9	3.1	4.2	5.2	14.1	5.3	3.1
2005	1	2.3	-1.0	0.6	3.2	5.0	1.2	2.0	8.1	2.0	0.9
	2	1.8	-1.5	1.0	2.9	4.1	6.0	5.0	17.5	7.4	2.5
	3	6.9	-1.4	0.9	2.8	3.5	8.0	6.3	11.5	8.4	0.9
	4	2.6	-1.3	0.5	3.1	4.4	5.7	4.9	7.3	5.9	1.9
2006	1	5.2	-0.1	0.1	3.7	4.6	5.2	7.3	10.0	5.8	1.2
	2	1.2	-0.4	-0.2	3.9	6.5	6.3	6.6	4.5	6.0	1.7
	3	0.6	-1.9	0.1	4.0	4.8	6.7	6.8	19.1	8.2	2.5
	4	8.7	-3.9	1.0	3.8	4.6	4.4	4.0	11.2	5.2	0.3
2007	1	1.6	-3.5	4.6	3.3	5.5	6.4	5.6	14.7	7.5	3.4
	2	5.6	-1.3	3.9	3.2	4.1	7.7	9.8	16.5	8.8	2.1
	3	9.2	-1.1	3.3	3.2	2.8	6.0	8.8	11.6	6.7	0.2
	4	-2.0	-2.1	3.0	3.3	-1.4	4.7	7.2	11.2	5.6	0.1
2008	1	0.2	-1.1	4.3	3.6	-7.1	-1.5	0.3	4.6	-0.6	-2.8
	2	10.2	-0.4	5.8	3.5	-8.3	2.2	3.6	2.1	2.2	4.6
	3	6.5	0.6	6.6	3.2	-10.2	1.8	5.1	11.9	3.2	1.1
	4	-2.6	3.6	6.6	2.5	-4.1	0.9	3.7	7.9	1.8	-0.8
2009	1	1.4	2.2	4.7	2.5	0.2	3.7	5.4	4.9	3.9	-0.8