



The South Africa I know, the home I understand



# Statistical release

## P0441

### Gross domestic product

Annual estimates 2003 – 2012

Regional estimates 2003 – 2012

Third quarter 2013

**Embargoed until:  
26 November 2013  
11:30**

**Enquiries:**

User information service  
012 310 8600/8390/4892

**Forthcoming issue:**

Fourth quarter 2013

**Expected release date**

25 February 2014



**CONTENTS**

	<b>Page</b>
<b>KEY FINDINGS FOR THE THIRD QUARTER OF 2013 .....</b>	<b>2</b>
<b>KEY FINDINGS FOR THE ANNUAL ESTIMATES 2007 TO 2012 .....</b>	<b>5</b>
<b>REGIONAL ESTIMATES .....</b>	<b>9</b>
<b>NOTES.....</b>	<b>13</b>
<b>THE TABLES .....</b>	<b>14</b>
<b>ADDITIONAL INFORMATION .....</b>	<b>55</b>
<b>Explanatory notes .....</b>	<b>55</b>
<b>Classification of industries.....</b>	<b>57</b>
<b>Classification of products .....</b>	<b>61</b>
<b>Data sources .....</b>	<b>62</b>
<b>Glossary .....</b>	<b>67</b>
<b>General information .....</b>	<b>73</b>

## KEY FINDINGS FOR THE THIRD QUARTER OF 2013

### Real gross domestic product at market prices increased by 0,7 per cent quarter-on-quarter, seasonally adjusted and annualised

The largest contributions to the quarter-on-quarter growth of 0,7 per cent were as follows:

- The mining and quarrying industry contributed 0,6 of a percentage point based on growth of 11,4 per cent;
- Finance, real estate and business services contributed 0,3 of a percentage point based on growth of 1,3 per cent; and
- The wholesale, retail and motor trade; catering and accommodation industry and the transport, storage and communication industry each contributed 0,2 of a percentage point based on growth of 1,3 per cent and 2,6 per cent respectively.

### Key economic developments

The following points should be noted when analysing the recent performance of the economy:

- Economic activity in the mining and quarrying industry reflected positive growth of 11,4 per cent, due to higher production in the mining of 'other' metal ores (including platinum) and 'other' mining and quarrying (including diamonds);
- The slower growth in finance, real estate and business services was due to slower activities in the equity, bond and other financial markets;
- The growth in the wholesale, retail and motor trade; catering and accommodation industry was due to increases reflected in turnover in all trade divisions;
- The growth in the agriculture, forestry and fishing industry was due to high production in horticulture and animal products; and
- Economic activity in the manufacturing industry reflected negative growth of 6,6 per cent, due to lower production in the motor vehicles, parts and accessories and other transport equipment division.

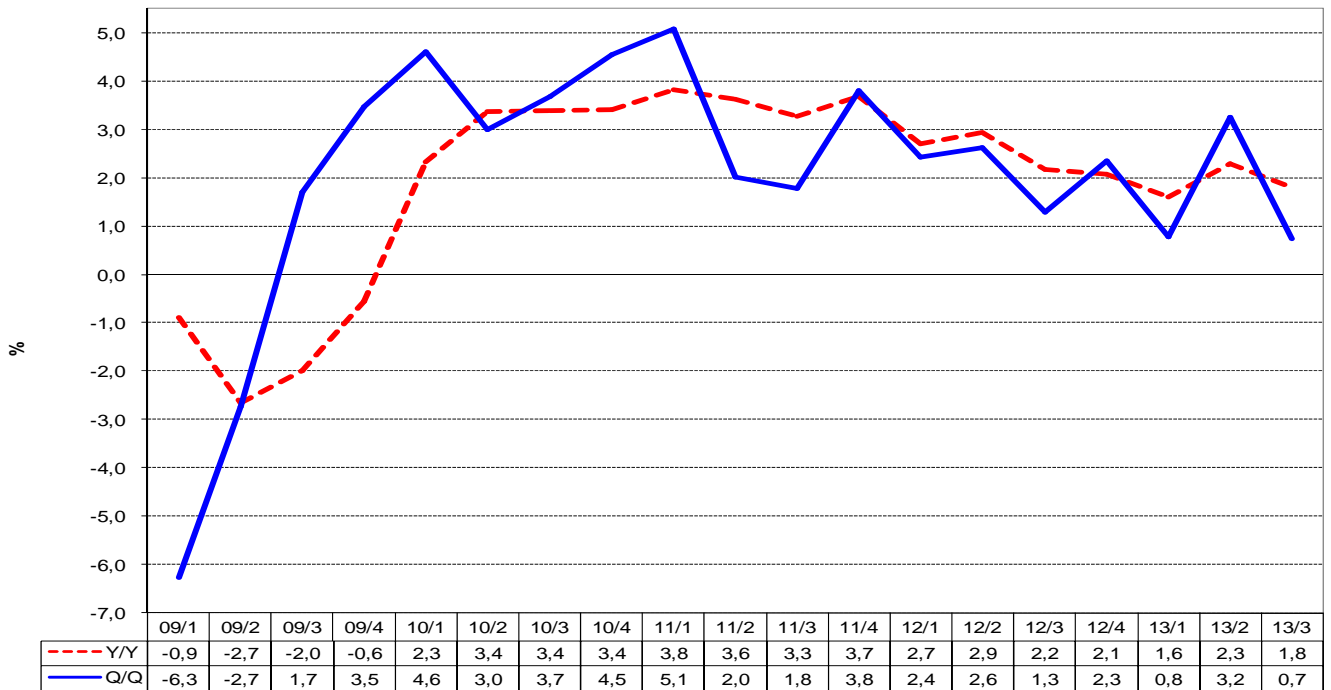
### The unadjusted real GDP at market prices increased by 1,8 per cent year-on-year

The most notable performances of industries in the third quarter of 2013 compared with the third quarter of 2012 were as follows:

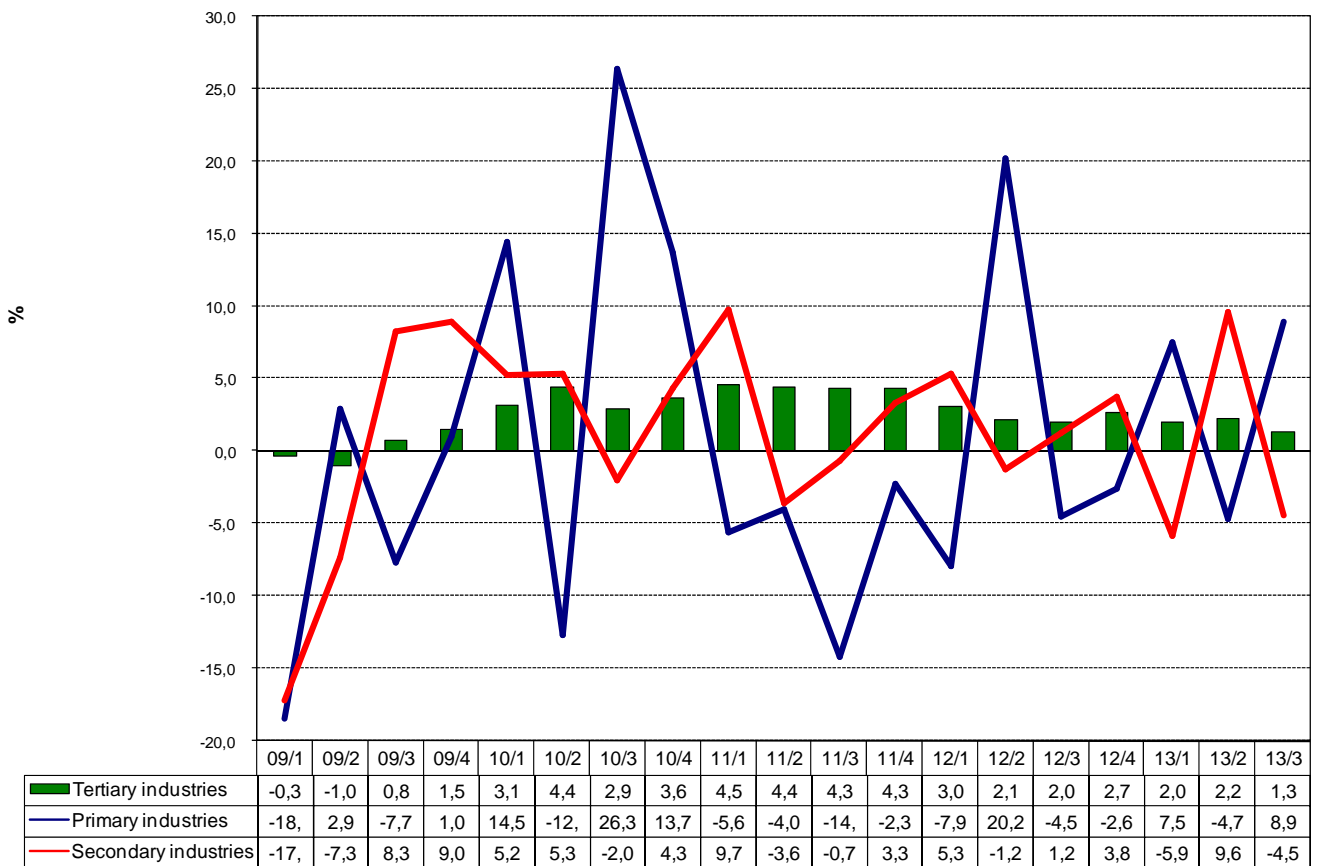
- Finance, real estate and business services increased by 3,9 per cent;
- The mining and quarrying industry increased by 2,7 per cent;
- The construction industry increased by 2,4 per cent;
- The transport, storage and communication industry increased by 2,1 per cent; and
- The agriculture, forestry and fishing industry decreased by 2,9 per cent.

The unadjusted real GDP at market prices for the first nine months of 2013 increased by 1,9 per cent compared with the first nine months of 2012.

**Figure 1 – Growth in gross domestic product year-on-year (Y/Y) and quarter-on-quarter seasonally adjusted and annualised (Q/Q)**



**Figure 2 – Value added growth rates in various sectors (seasonally adjusted and annualised)**



## Revised estimates of gross domestic product:

Recent estimates of GDP were revised due to availability of new sources of information. The information relating to 2013 is shown in Table A.

**Table A – Quarterly GDP revisions: 2013**

Industry		Unadjusted (Y/Y)			Seasonally adjusted and annualised (Q/Q)		
		2013			2013		
		Q1	Q2	Q3	Q1	Q2	Q3
Agriculture, forestry and fishing	<b>Revised</b>	<b>4,9</b>	<b>6,8</b>	<b>-2,9</b>	<b>-4,4</b>	<b>-3,0</b>	<b>3,6</b>
	Previous	4,0	6,7		-4,9	-3,7	
Mining and quarrying	<b>Revised</b>	<b>3,5</b>	<b>-2,8</b>	<b>2,7</b>	<b>13,4</b>	<b>-5,4</b>	<b>11,4</b>
	Previous	3,7	-2,8		14,6	-5,6	
Manufacturing	<b>Revised</b>	<b>-0,3</b>	<b>2,6</b>	<b>-0,4</b>	<b>-7,9</b>	<b>11,7</b>	<b>-6,6</b>
	Previous	-0,4	2,7		-7,9	11,5	
Electricity, gas and water	<b>Revised</b>	<b>-2,7</b>	<b>0,1</b>	<b>0,9</b>	<b>-2,8</b>	<b>5,1</b>	<b>3,8</b>
	Previous	-2,4	0,2		-3,0	5,3	
Construction	<b>Revised</b>	<b>2,0</b>	<b>2,2</b>	<b>2,4</b>	<b>2,5</b>	<b>2,3</b>	<b>2,1</b>
	Previous	1,6	1,3		0,9	1,2	
Wholesale, retail, and motor trade; catering and accommodation	<b>Revised</b>	<b>2,2</b>	<b>2,4</b>	<b>2,0</b>	<b>2,1</b>	<b>3,1</b>	<b>1,3</b>
	Previous	2,1	2,4		1,9	3,2	
Transport, storage and communication	<b>Revised</b>	<b>1,8</b>	<b>1,8</b>	<b>2,1</b>	<b>2,1</b>	<b>1,5</b>	<b>2,6</b>
	Previous	1,8	1,7		2,2	1,6	
Finance, real estate and business services	<b>Revised</b>	<b>1,7</b>	<b>3,6</b>	<b>3,9</b>	<b>3,3</b>	<b>3,5</b>	<b>1,3</b>
	Previous	2,4	2,6		3,3	3,5	
General government services	<b>Revised</b>	<b>2,2</b>	<b>1,7</b>	<b>1,0</b>	<b>0,1</b>	<b>0,2</b>	<b>0,4</b>
	Previous	2,5	1,8		1,9	0,3	
Personal services	<b>Revised</b>	<b>1,9</b>	<b>1,5</b>	<b>1,8</b>	<b>1,2</b>	<b>1,6</b>	<b>1,6</b>
	Previous	2,1	1,6		1,4	1,9	
Total value added	<b>Revised</b>	<b>1,6</b>	<b>2,3</b>	<b>1,8</b>	<b>0,6</b>	<b>3,3</b>	<b>0,6</b>
	Previous	1,8	2,0		0,8	3,2	
Taxes less subsidies on products	<b>Revised</b>	<b>1,5</b>	<b>2,3</b>	<b>1,9</b>	<b>2,3</b>	<b>3,1</b>	<b>2,1</b>
	Previous	3,0	2,1		1,5	1,3	
GDP at market prices	<b>Revised</b>	<b>1,6</b>	<b>2,3</b>	<b>1,8</b>	<b>0,8</b>	<b>3,2</b>	<b>0,7</b>
	Previous	1,9	2,0		0,9	3,0	

## Nominal GDP estimated at R863 billion for the third quarter of 2013

The nominal GDP at market prices during the third quarter of 2013 was R863 billion, which is R24 billion more than in the second quarter of 2013. The most notable performances were as follows:

- The mining and quarrying industry expanded by R8 billion to R74 billion;
- The manufacturing industry expanded by R5 billion to R89 billion;
- The wholesale, retail and motor trade; catering and accommodation industry expanded by R2 billion to R124 billion; and
- The agriculture, forestry and fishing industry decreased by R15 billion to R17 billion.

## Structure of the economy

The largest industries, as measured by their nominal value added in the third quarter of 2013, were as follows:

- Finance, real estate and business services – 21,4 per cent;
- General government services – 17,2 per cent;
- Wholesale, retail and motor trade; catering and accommodation – 16,0 per cent; and
- Manufacturing – 11,6 per cent.

**PP**  
**PJ Lehohla**  
**Statistician-General**

## KEY FINDINGS FOR THE ANNUAL ESTIMATES 2007 TO 2012

### Revised level of GDP

The level of nominal GDP has been revised by between -0,5 per cent and 0,6 per cent for the period 2009 to 2012 as illustrated in Table B. The level of GDP at current prices for the period 2007 to 2008 remained unchanged as revisions were done from the year 2009 onwards. The estimate of the level of GDP at current prices for the year 2012 is -0,5 per cent lower compared with the previous published estimate.

**Table B - Gross domestic product at current prices according to the previous and revised estimates**

	2007	2008	2009	2010	2011	2012
Previous GDP (Rand billion)	2 016	2 256	2 406	2 659	2 917	3 155
<i>Revised GDP (Rand billion)</i>	2 016	2 256	2 408	2 674	2 933	3 139
Difference (Rand billion)	0	0	2	15	16	-16
Difference (percentage)	0	0	0,1	0,6	0,5	-0,5

### Revised growth in real GDP

The revised estimates of the level of GDP necessitate a revision of the annual rates of growth of GDP as well. The growth rates for 2007 to 2010 remained unchanged. The growth rate for 2011 was revised from 3,5 per cent to 3,6 and 2012 remained unchanged. The annual growth rates in real GDP between 2007 and 2012 are indicated in Table C.

**Table C - Annual growth in the gross domestic product at constant prices according to the previous and revised estimates**

	2007	2008	2009	2010	2011	2012
Previous annual percentage growth in GDP (2005 prices)	5,5	3,6	-1,5	3,1	3,5	2,5
<i>Revised annual percentage growth in GDP (2005 prices)</i>	5,5	3,6	-1,5	3,1	3,6	2,5

### Annual real value added by industry

Table D shows the contribution of the different industries, and taxes less subsidies on products, to the annual percentage change in real GDP for the four years 2009 to 2012.

The main contributors to the increase in economic activity in 2012 were finance, real estate and business services (0,8 of a percentage point), the wholesale, retail and motor trade; catering and accommodation industry (0,5 of a percentage point), general government services (0,4 of a percentage point), and the manufacturing industry (0,3 of a percentage point). A negative contribution was recorded by the mining and quarrying industry (-0,2 of a percentage point).

**Table D – Contribution of the percentage change in real value added by industry to the total real annual economic growth rate (real GDP at market prices)**

Industry	Relative size 2012 (per cent) <sup>1</sup>	Real annual percentage change for the year 2009 (compared with 2008), 2010 (compared with 2009), 2011 (compared with 2010) and 2012 (compared with 2011)				Contributions to the total real annual economic growth rate (percentage points) <sup>2</sup>			
		2009	2010	2011	2012	2009	2010	2011	2012
Agriculture, forestry and fishing	2,2	-1,6	0,4	-0,1	2,0	0,0	0,0	0,0	0,0
Mining and quarrying	5,2	-5,4	5,7	0,3	-3,6	-0,3	0,3	0,0	-0,2
Manufacturing	15,3	-10,1	5,5	3,3	2,1	-1,7	0,8	0,5	0,3
Electricity, gas and water	1,8	-1,4	2,5	1,5	-1,6	0,0	0,0	0,0	0,0
Construction	3,0	7,8	0,7	0,3	2,3	0,2	0,0	0,0	0,1
Wholesale, retail and motor trade; catering and accommodation	12,3	-1,2	3,8	4,4	3,8	-0,1	0,5	0,5	0,5
Transport, storage and communication	9,0	0,9	2,0	3,1	2,4	0,1	0,2	0,3	0,2
Finance, real estate and business services	21,3	1,0	2,2	4,7	3,7	0,2	0,5	1,0	0,8
General government services	13,7	3,9	3,1	4,2	2,8	0,5	0,4	0,6	0,4
Personal services	5,4	-0,9	0,4	2,3	2,1	0,0	0,0	0,1	0,1
<i>Total value added</i>	<b>89,2</b>	-1,3	3,1	3,4	<b>2,4</b>	-1,2	2,7	3,1	<b>2,2</b>
Taxes less subsidies on products	10,8	-3,1	3,7	5,0	2,7	-0,3	0,4	0,5	0,3
GDP at market prices	<b>100,0</b>	-1,5	3,1	3,6	<b>2,5</b>	-1,5	3,1	3,6	<b>2,5</b>

1/The relative size of each industry for the year of 2012 is the share of its real value added of the GDP for the year 2011. Similarly, the relative size of taxes less subsidies on products is the share of its value of the real GDP for the year 2011.

2/ The contribution is calculated by multiplying the percentage change of each industry (and taxes less subsidies on products) by its share of GDP in the previous year (i.e. its relative size).



**GDP deflator**

The GDP deflator is defined as the ratio of the nominal estimates of GDP to the real estimates of GDP. It is an indication of the change in prices in the economy from the perspective of national accounts. The GDP deflator can be compared with two other popular price indices, i.e. the consumer price index (CPI) and the producer price index (PPI). Table E compares these three indices from 2007 to 2012, with 2005 as the common reference year (index = 100).

**Table E – GDP deflator 2007 - 2012**

Index	2007	2008	2009	2010	2011	2012
CPI	109,5	120,3	128,9	134,4	141,1	149,1
PPI	119,5	136,6	136,6	144,8	156,9	166,6
GDP deflator	115,1	124,4	134,8	145,1	153,6	160,4

Similarly, the deflators can be calculated for the various industries to provide an indication of the underlying details of the GDP deflator. This is illustrated in Table F.

**Table F – GDP deflator by industry 2007 - 2012**

Industry	2007	2008	2009	2010	2011	2012
Agriculture, forestry and fishing	148,3	143,7	153,6	150,8	156,8	167,4
Mining and quarrying	149,0	197,7	208,9	229,6	275,4	281,1
Manufacturing	104,9	114,3	123,9	122,3	115,7	114,5
Electricity, gas and water	118,4	134,2	179,2	182,6	208,3	245,0
Construction	116,2	135,9	151,1	159,3	170,6	178,4
Wholesale, retail and motor trade; catering and accommodation	109,8	123,5	137,5	160,1	172,5	186,5
Transport, storage and communication	105,2	116,8	121,5	133,2	142,3	145,7
Finance and business services	116,0	116,9	122,7	131,1	134,9	142,2
Government	116,4	125,7	142,0	156,8	164,9	174,4
Personal services	111,4	116,3	132,5	146,4	151,8	160,6

## Formal and non-observed economy

The production boundary (the range of goods and services included in the estimates of value added) can be divided according to the formal and the non-observed economy. This is illustrated in Table G.

**Table G – Relative size (percentage) of formal and non-observed economy: 2007 - 2012**

Industry	2007	2008	2009	2010	2011	2012
Formal	88,1	88,5	88,0	88,4	89,2	89,1
Informal	5,5	5,4	5,7	5,6	5,1	5,2
Own final use	6,3	5,9	6,1	5,8	5,5	5,5
Other non-observed	0,1	0,2	0,2	0,2	0,2	0,2
Total	100,0	100,0	100,0	100,0	100,0	100,0

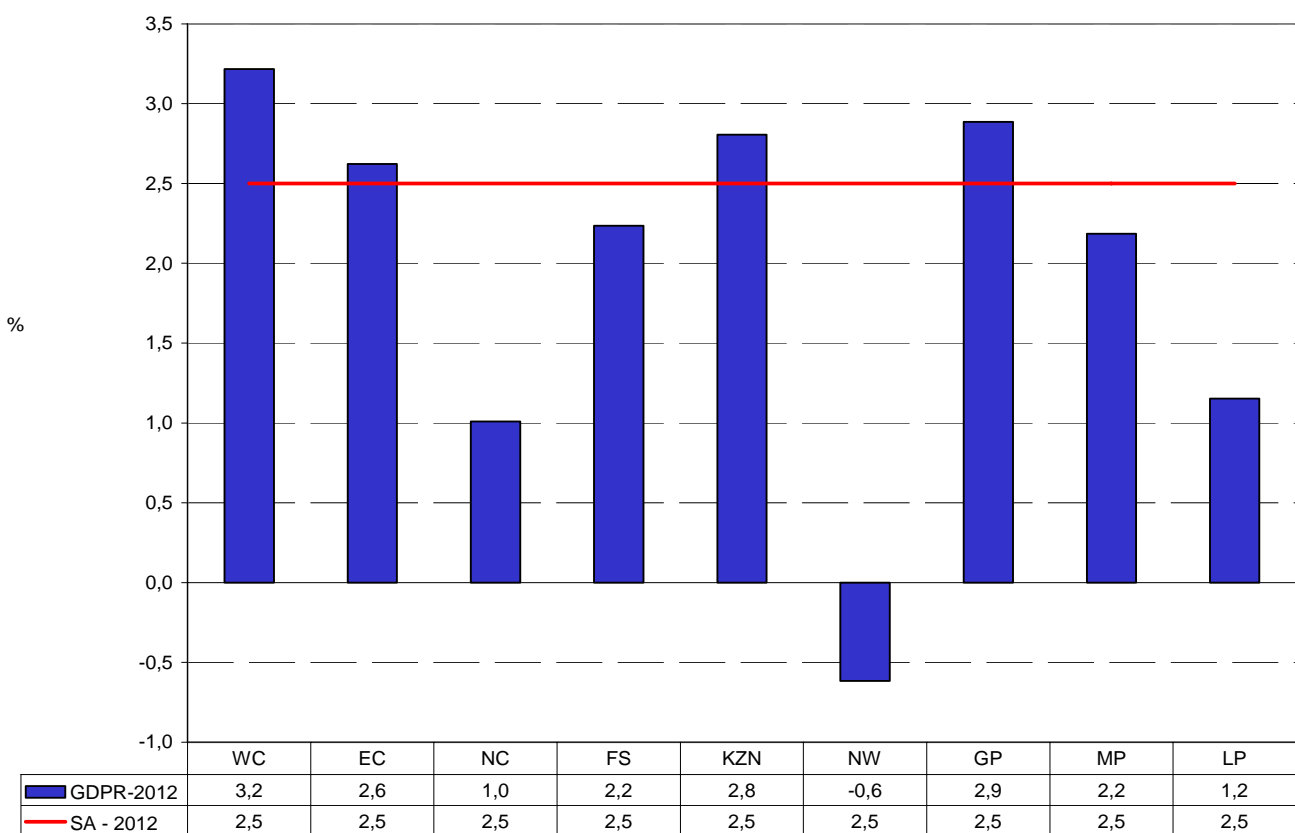
The estimates of the different components of the economy shown in Table G are stable over time. The informal sector was estimated at 5,2 per cent in 2012, with the proportion of production for own final use estimated at 5,5 per cent. The rest of the non-observed economy contributed 0,2 per cent.

## REGIONAL ESTIMATES

Preliminary estimates indicate that the highest real annual economic growth rates per region - as measured by the gross domestic product per region (GDPR) at market prices - for 2012 compared with 2011 were recorded in Western Cape at 3,2 per cent, Gauteng at 2,9 per cent and KwaZulu-Natal at 2,8 per cent.

The economic performance of Western Cape is attributed to growth in the wholesale, retail and motor trade; catering and accommodation industry (3,8 per cent), finance, real estate and business services (3,6 per cent), general government services (3,1 per cent) and personal services (2,3 per cent). The economic performance of Gauteng is attributed to the growth in the wholesale, retail and motor trade; catering and accommodation industry (3,9 per cent), finance, real estate and business services (3,8 per cent) and the transport, storage and communication industry and general government services (each 3,0 per cent). North West recorded the lowest growth rate (-0,6 per cent) of the nine provinces in 2012. In comparison, the real annual economic growth rate for South Africa was 2,5 per cent in 2012 (see Table 16 and Figure 3).

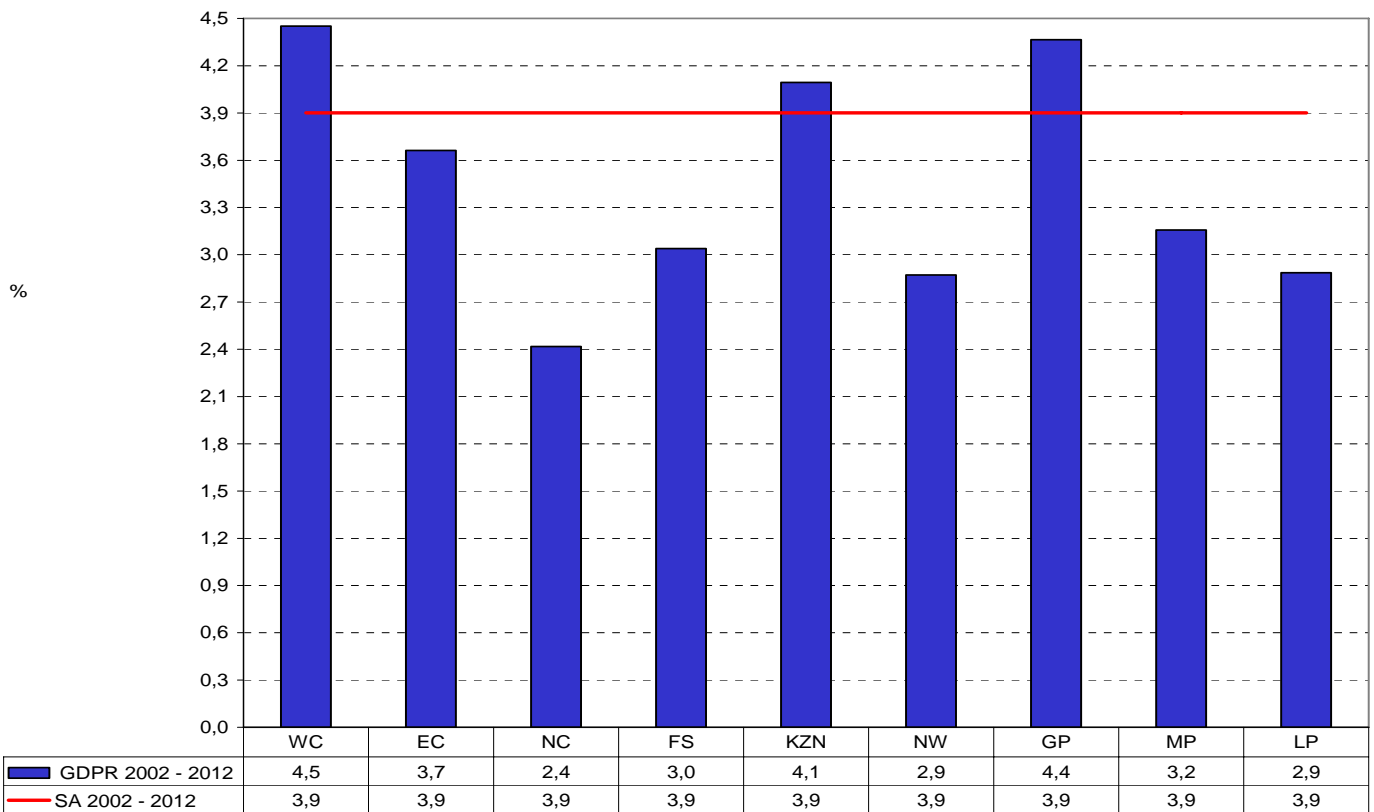
**Figure 3 – Real annual economic growth rate per region: 2012**



A comparison of the average real economic growth rate from 2002 to 2012 recorded by the provincial economies and the total economy is shown in Figure 4. The South African economy recorded an average growth rate of 3,9 per cent. Western Cape and Gauteng were above the national average with rates of 4,5 and 4,4 per cent respectively. All other provincial economies recorded growth rates lower than the national average, e.g. Northern Cape posted an average economic growth rate of 2,4 per cent over the period.

The relative ranking of the contribution of the nine provinces to the South African economy did not change between 1997 and 2012, as shown in Figure 5. Gauteng remains the largest (34,7 per cent), followed by KwaZulu-Natal (15,8 per cent) and Western Cape (14,0 per cent). These three dominant provinces (collectively contributing nearly two-thirds to the South African economy) have, however, shown a slight decline in their combined contribution over the period. Positive growth in terms of relative size was recorded by Mpumalanga and Limpopo, the latter increasing from 6,8 per cent (2007) to 7,1 per cent (2012).

**Figure 4 – Average real annual economic growth rate per region: 2002 – 2012**



**Figure 5 – Provincial contribution to South African economy: 1997, 2007 and 2012**

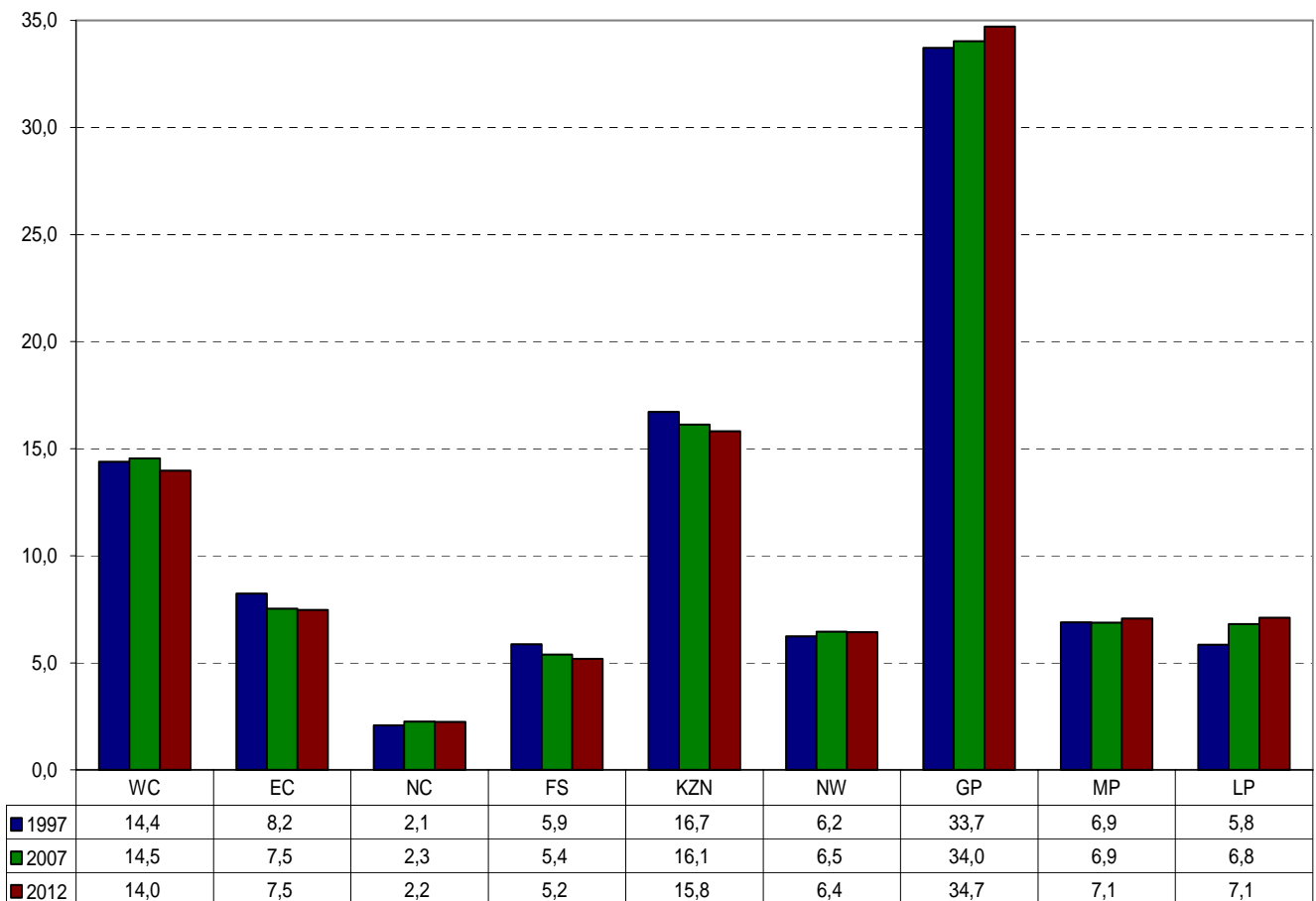


Table H describes the regional distribution of economic activity across the nine provinces. Given the dominance of Gauteng in the economy, all industry groups are found to be concentrated there, except for the agriculture, forestry and fishing industry and the mining and quarrying industry. The bulk of the value added by the agriculture, forestry and fishing industry in South Africa stems from KwaZulu-Natal (26,4 per cent) and Western Cape (22,6 per cent). The mining industry is predominantly in North West (24,7 per cent), Limpopo (23,7 per cent) and Mpumalanga (20,0 per cent).

**Table H – Regional distribution of economic activity: 2012**

Industry	Western Cape	Eastern Cape	Northern Cape	Free State	KwaZulu-Natal	North West	Gauteng	Mpumalanga	Limpopo	SA
Agriculture, forestry and fishing	22,6	5,4	6,1	10,5	26,4	6,2	5,9	8,5	8,4	100
Mining and quarrying	0,3	0,2	6,9	7,8	3,4	24,7	12,9	20,0	23,7	100
Manufacturing	14,7	7,9	0,2	3,8	21,7	2,2	40,8	7,3	1,4	100
Electricity and water	10,9	3,8	2,5	6,0	15,6	3,4	34,2	15,4	8,1	100
Construction	17,6	4,7	1,2	3,0	13,5	4,7	43,3	6,7	5,3	100
Wholesale & retail and motor trade;catering and accomodation	17,3	8,3	1,5	4,7	17,7	4,5	35,4	5,3	5,4	100
Transport, storage and communication	15,6	7,2	2,1	4,4	22,5	4,6	34,4	4,7	4,7	100
Finance, real estate and business services	18,9	7,0	1,4	4,0	13,5	4,0	41,9	4,2	5,2	100
General government services	9,6	11,0	2,0	4,9	14,9	5,1	39,6	5,0	7,9	100
Personal services	13,8	12,9	3,5	9,9	17,2	8,4	23,8	5,5	5,0	100

An alternative presentation is provided in Table I which shows the relative size of different industries in each provincial economy. It shows that manufacturing accounts for 12,8 per cent of the Gauteng economy, even though 40,8 per cent of South African manufacturing industry is in the province. The dominant industry in Gauteng's economy is finance, real estate and business services, which contributes 23,0 per cent to the regional gross domestic product. The mining and quarrying industry is the biggest contributor in the economies of four provinces, namely North West, Limpopo, Northern Cape and Mpumalanga.

**Table I – Relative size of formal and non-observed economy by industry: 2012**

Industry	Western Cape	Eastern Cape	Northern Cape	Free State	KwaZulu-Natal	North West	Gauteng	Mpumalanga	Limpopo
Agriculture, forestry and fishing	3,7	1,6	6,2	4,6	3,8	2,2	0,4	2,7	2,7
Mining and quarrying	0,2	0,2	26,5	13,0	1,8	33,1	3,2	24,3	28,7
Manufacturing	11,4	11,5	1,1	7,9	14,9	3,7	12,8	11,2	2,1
Electricity and water	2,1	1,4	3,0	3,1	2,7	1,4	2,7	5,9	3,1
Construction	4,2	2,1	1,8	1,9	2,9	2,5	4,2	3,2	2,5
Wholesale, retail and motor trade; catering and accomodation	17,9	16,1	9,7	13,2	16,2	10,2	14,8	10,8	11,0
Transport, storage and communication	9,1	7,8	7,8	6,9	11,6	5,8	8,1	5,5	5,4
Finance, real estate and business services	25,7	17,9	11,6	14,5	16,3	12,0	23,0	11,3	13,9
General government services	10,2	21,8	13,5	14,1	14,0	11,7	17,0	10,6	16,5
Personal services	5,3	9,3	8,4	10,4	5,9	7,1	3,7	4,3	3,9
<b>All industries at basic prices</b>	<b>90,0</b>	<b>89,8</b>	<b>89,7</b>	<b>89,7</b>	<b>90,1</b>	<b>89,7</b>	<b>89,8</b>	<b>89,7</b>	<b>89,7</b>
<b>GDP at market prices</b>	<b>100,0</b>	<b>100,0</b>	<b>100,0</b>	<b>100,0</b>	<b>100,0</b>	<b>100,0</b>	<b>100,0</b>	<b>100,0</b>	<b>100,0</b>

**NOTES**

<b>Forthcoming issues</b>	Issue	Expected date of publications
	Fourth quarter of 2013	25 February 2014
	First quarter of 2014	27 May 2014
	Second quarter of 2014	26 August 2014
	Third quarter of 2014	25 November 2014

**Methodology** Statistics South Africa (Stats SA) is responsible for compiling the production side of the national accounts, while the South African Reserve Bank (SARB) is responsible for compiling the expenditure side of the national accounts, as well as income and savings and the balance of payments. The SARB will release its estimates on 3 December 2013.

## THE TABLES

This statistical release includes 39 tables that relate to estimates of nominal and real GDP. They cover estimates by industry on a quarterly, annual and regional basis. In addition, time-series of supply and use tables are provided. Table J provides an overview of the various tables and their contents:

### Table J – Descriptions of series of tables

Table number	Table description
<b>Tables 1 to 2</b>	Tables 1 and 2 show values added by industry at constant 2005 basic prices, in Rand million and as percentage changes from the same quarter in the previous year. Table 2 also includes the percentage change in the first three quarters in 2013 added together compared with the corresponding quarters in 2012.
<b>Tables 3 to 4</b>	Tables 3 and 4 contain seasonally adjusted and annualised values added at constant 2005 basic prices by industry, in Rand million and as annualised percentage changes from the previous quarter. Seasonal adjustment is a method for removing the estimated effects of normal seasonal variation from the quarterly estimates. Although seasonality is an integral part of the quarterly data it may represent an impediment to effective analysis of the business cycle. However, irregular fluctuations because of events such as strikes can still make it difficult to interpret seasonally adjusted data. The annualised values added are equal to the seasonally quarterly data multiplied by four, while the annualised growth rates are derived by raising the change in a given quarter from the previous quarter to the power of four. The intent of annualisation is to indicate what the real growth would be if the present growth rate were to be sustained for a year.
<b>Tables 5 to 7</b>	Tables 5 to 7 present quarterly estimates at current prices of values added by industry and GDP (Table 5), of compensation of employees (Table 6) and gross operating surplus and net other taxes on production (Table 7) by industry. Seasonally adjusted values added at current prices are available from the South African Reserve Bank (SARB).
<b>Tables 8 to 9</b>	Tables 8 and 9 show values added at current basic prices for detailed industries in Rand million and as percentages of the total value added of all industries. The latter is the preferred measurement of the relative contributions by the different industries to GDP. The measurement of the contribution to GDP entails the contribution of productive activities.
<b>Tables 10 to 11</b>	Tables 10 and 11 present values added at constant 2005 basic prices for detailed industries, in Rand million and as annual percentage changes.
<b>Table 12</b>	<p>Table 12 contains production accounts at current prices for aggregate industries. The total – the production account for the sum of all industries – does not add up to GDP at market prices. Taxes on products must be added and subsidies on products deducted as presented in Table 8.</p> <p>The production account can serve to illustrate the derivation of values added by both the production and income methods. It reflects the following identities:</p> <p style="padding-left: 40px;">Output at basic prices</p> <p>Minus Intermediate consumption</p> <p>= Gross value added at basic prices</p> <p>minus Other taxes on production</p> <p>plus Other subsidies</p> <p>= Value added at factor cost</p> <p>plus Compensation of employees</p> <p>= Gross operating surplus/mixed income</p>



Value added and operating surplus are derived gross of consumption of fixed capital. Consumption of fixed capital is a cost of production reflecting the wear and tear of capital assets used in the production process.

According to the production method, data on output and intermediate consumption are used to derive value added. In practice, estimates must in many cases rely on single indicators for output and the estimate of intermediate consumption must rely on assumptions that can be checked when, for instance, results from an intermittent economic survey or census become available.

The components of value added are other taxes on production, other subsidies (a negative item), compensation of employees and operating surplus/mixed income. The latter two make up value added at factor cost. According to the income method, data on the components of value added are compiled and added up. By its nature, it is difficult to get reliable data on operating surplus/mixed income, which in important respects differs from the concept of profit in business accounting. To a certain extent, the income method is used as a complement to the production method, notably for mining and manufacturing, relying on the financial statistics of Stats SA.

The concept of mixed income indicates that working proprietors and self-employed persons do not, by definition, receive wages and salaries. The surplus of their activities – the residual after deducting all costs from their income – must provide for both remuneration for their labour and a return on their capital. Hence, the term mixed income does not appear in Table 12 for general government services and other producers. There are no self-employed persons in these activities.

**Table 13** Table 13 contains production accounts at constant 2005 prices for aggregate industries. In order to measure a transaction at constant prices, it must be possible, at least in principle, to factor it into a price and a volume component and keep the former component constant. This can be done either by using price indices for deflation of the current prices or volume indicators in order to extrapolate the base year value. Note that the volume component must reflect both changes in quantity and quality.

The variables that define value added in the production approach – output and intermediate consumption – can both be factored into a price and volume component. Value added at constant prices is defined as the difference between the two and cannot in itself be factored into price and volume components. Ideally, value added at constant prices should be derived by estimating output and intermediate consumption at constant prices separately, the double deflation method. Frequently, however, single indicators have to be used in practice. Value added at constant prices is then normally derived by using an output indicator. The components of value added – with the exception of compensation of employees – cannot be factored into price and volume components.

**Table 14** Table 14 indicates an alternative way of presenting value added and GDP estimates at constant prices, i.e. as index numbers by industry with the base year (2005) equal to 100.

**Table 15** Table 15 presents annual implied deflators for the main industries. The implied deflator is equal to the value added at current prices divided by the value added at constant prices. The GDP deflator is sometimes used as an alternative measure of inflation.

**Tables 16 to 25** Tables 16 to 25 contain GDP per region – at current prices (in Rand million and percentage contributions to GDP) and at constant 2005 prices (in Rand million and percentage changes from the previous year).

**Tables 26 to 35** Tables 26 to 35 contain value added per industry per region – in current prices (in Rand million and percentage contributions of each region to the total value added of the specific industry) and at constant 2005 prices (in Rand million and percentage changes from the previous year).

**Tables 36 to 39** Tables 36 to 39 contain summarised sets of supply and use tables for 2009 to 2012.



**Table 2 - Percentage change in the quarterly value added by industry and gross domestic product at constant 2005 prices**

Year <sup>1/</sup>	Quarter <sup>2/</sup>	Agriculture, forestry and fishing	Mining and quarrying	Manufacturing	Electricity, gas and water	Construction	Wholesale, retail and motor trade; catering and accommodation	Transport, storage and communication	Finance, real estate and business services	General government services	Personal services	Total value added at basic prices	Taxes less subsidies on products	GDP at market prices	Total value added at basic prices excluding agriculture
2003		0,7	3,4	-1,5	3,0	7,7	2,7	6,3	4,8	2,8	5,6	3,0	2,7	2,9	3,1
2004		0,9	1,5	4,9	6,8	9,1	5,4	4,9	7,1	1,9	1,7	4,5	5,0	4,6	4,6
2005		2,8	1,0	6,2	5,3	11,9	7,0	5,3	5,7	4,3	3,8	5,3	5,0	5,3	5,4
2006		-5,5	-0,6	6,4	3,4	10,4	6,0	5,1	9,6	3,1	5,2	5,5	6,2	5,6	5,8
2007		2,7	0,0	5,2	3,4	15,0	5,3	6,6	7,9	3,9	5,6	5,6	5,2	5,5	5,7
2008		16,1	-5,6	2,6	-3,1	8,5	1,0	4,0	7,4	4,5	3,9	3,8	2,5	3,6	3,5
2009		-1,6	-5,4	-10,1	-1,4	7,8	-1,2	0,9	1,0	3,9	-0,9	-1,3	-3,1	-1,5	-1,3
2010		0,4	5,7	5,5	2,5	0,7	3,8	2,0	2,2	3,1	0,4	3,1	3,7	3,1	3,2
2011		-0,1	0,3	3,3	1,5	0,3	4,4	3,1	4,7	4,2	2,3	3,4	5,0	3,6	3,5
2012		2,0	-3,6	2,1	-1,6	2,3	3,8	2,4	3,7	2,8	2,1	2,4	2,7	2,5	2,4
2003	1	-8,2	2,9	1,9	3,6	8,2	1,6	7,3	4,5	2,4	5,1	3,3	2,8	3,2	3,5
	2	10,6	3,5	-1,6	2,7	8,1	1,8	6,5	4,2	2,7	6,2	3,2	3,1	3,2	2,9
	3	5,1	4,1	-2,5	2,7	7,9	3,5	5,4	5,2	2,9	6,5	3,1	2,0	3,0	3,1
	4	-20,4	3,0	-3,6	2,9	6,7	3,5	6,2	5,4	3,1	4,4	2,4	2,7	2,4	2,8
2004	1	0,6	5,0	1,9	6,1	6,3	4,5	4,1	6,2	1,7	2,0	3,8	3,4	3,7	3,9
	2	-9,3	1,3	4,4	6,7	8,7	4,8	4,3	7,0	1,8	1,7	3,6	4,6	3,7	4,3
	3	9,9	2,3	6,2	7,5	10,8	3,9	5,9	7,1	1,7	0,8	4,9	5,9	5,0	4,8
	4	16,6	-2,3	7,0	6,8	10,5	7,9	5,1	7,9	2,4	2,4	5,6	6,2	5,7	5,4
2005	1	15,2	4,2	3,6	5,3	11,8	7,6	5,7	5,6	3,9	4,9	5,4	5,5	5,4	5,2
	2	-7,2	2,4	7,2	5,2	12,3	6,9	5,7	5,7	4,6	3,8	5,2	5,3	5,2	5,7
	3	9,6	-1,9	7,0	3,9	12,0	7,1	5,1	6,1	4,9	3,3	5,5	5,0	5,5	5,4
	4	1,4	-0,6	6,8	7,0	11,6	6,7	4,8	5,5	3,8	3,1	5,1	4,1	5,0	5,2
2006	1	-1,1	-5,4	7,0	2,8	10,7	5,4	4,6	8,4	3,6	5,8	5,1	5,2	5,1	5,2
	2	-8,7	-2,4	5,5	3,3	10,4	6,0	4,9	9,5	2,7	5,3	4,9	5,6	4,9	5,4
	3	-9,6	-0,4	5,5	3,9	10,4	6,3	5,9	10,0	2,4	4,5	5,2	5,3	5,2	5,7
	4	5,5	6,3	7,8	3,6	10,3	6,1	5,0	10,6	3,5	5,3	6,9	8,8	7,1	6,9
2007	1	3,2	2,2	7,0	3,6	15,3	6,2	7,3	8,6	4,2	6,5	6,6	7,6	6,7	6,6
	2	3,1	0,4	5,6	2,9	13,8	5,8	7,1	6,8	3,6	7,2	5,6	5,3	5,5	5,6
	3	2,1	0,5	3,6	4,0	12,5	5,5	5,9	7,1	4,0	6,2	5,1	5,5	5,1	5,1
	4	2,2	-3,0	5,0	3,0	18,3	4,0	6,3	9,0	3,7	2,3	5,2	2,8	5,0	5,3
2008	1	19,0	-8,8	2,9	-2,8	9,9	4,2	4,4	6,4	3,9	4,3	3,8	3,3	3,8	3,5
	2	16,6	-3,6	6,8	-3,9	10,0	2,0	4,1	8,3	4,4	4,7	5,2	3,9	5,1	4,8
	3	15,2	-5,9	4,8	-0,9	10,2	-1,1	3,9	8,0	4,9	4,0	4,2	2,0	3,9	3,9
	4	13,2	-4,3	-3,5	-4,8	4,5	-0,6	3,7	6,8	4,9	2,6	1,9	0,8	1,8	1,8
2009	1	-1,9	-6,5	-10,0	-2,1	9,1	-1,2	2,2	3,0	4,0	-1,5	-0,7	-2,0	-0,9	-0,7
	2	-3,5	-6,8	-14,7	-1,1	7,9	-2,1	0,8	1,5	4,7	-2,2	-2,4	-4,8	-2,7	-2,4
	3	-2,7	-4,4	-10,9	-3,2	7,2	-0,1	0,4	0,1	3,7	-1,5	-1,8	-4,0	-2,0	-1,7
	4	4,8	-3,8	-4,8	0,8	7,1	-1,4	0,4	-0,5	3,3	2,0	-0,5	-1,4	-0,6	-0,5
2010	1	1,8	9,5	4,0	2,9	2,8	1,0	0,7	1,4	2,8	-0,4	2,4	2,1	2,3	2,4
	2	2,5	-0,3	8,8	2,6	1,5	3,7	2,0	2,2	2,9	0,3	3,3	4,2	3,4	3,3
	3	-1,7	6,5	5,4	1,8	-0,4	4,6	2,6	2,5	3,0	0,7	3,2	4,8	3,4	3,4
	4	-1,9	7,0	4,0	2,5	-0,8	5,5	2,8	2,5	3,6	1,1	3,4	3,6	3,4	3,5
2011	1	-1,9	1,6	5,9	2,1	-0,2	4,2	3,0	4,1	3,7	3,5	3,7	4,6	3,8	3,8
	2	-0,6	8,9	1,9	2,2	0,4	3,9	3,3	4,2	4,1	2,6	3,5	4,8	3,6	3,6
	3	0,9	-3,7	2,4	1,1	0,6	4,4	3,0	5,1	4,3	1,6	3,1	4,8	3,3	3,1
	4	1,5	-4,7	3,2	0,5	0,4	5,0	3,2	5,5	4,6	1,5	3,5	5,7	3,7	3,5
2012	1	5,3	-9,4	0,6	-0,5	1,3	4,7	3,0	5,5	3,1	1,6	2,5	4,1	2,7	2,5
	2	6,2	-1,3	2,0	-2,0	1,6	4,2	2,7	4,2	2,6	3,0	2,9	3,4	2,9	2,8
	3	-2,8	-0,7	2,2	-1,5	2,7	3,5	2,2	2,7	2,7	2,8	2,2	1,7	2,2	2,4
	4	-2,2	-3,1	3,3	-2,5	3,6	3,1	1,9	2,4	2,7	0,8	2,1	1,7	2,1	2,2
2013	1	4,9	3,5	-0,3	-2,7	2,0	2,2	1,8	1,7	2,2	1,9	1,6	1,5	1,6	1,6
	2	6,8	-2,8	2,6	0,1	2,2	2,4	1,8	3,6	1,7	1,5	2,3	2,3	2,3	2,1
	3	-2,9	2,7	-0,4	0,9	2,4	2,0	2,1	3,9	1,0	1,8	1,8	1,9	1,8	1,9
	1-3 <sup>3/</sup>	3,1	1,0	0,6	-0,6	2,2	2,2	1,9	3,1	1,7	1,7	1,9	1,9	1,9	1,9

1/ The percentage change is the growth rate from the previous year.

2/ The percentage change is the growth rate for a given quarter compared with the same quarter in the previous year.

3/ The percentage change is the growth rate for the first nine months of the year compared with the first nine months of the previous year.



**Table 4 - Annualised percentage change in the seasonally adjusted quarterly value added by industry and gross domestic product at constant 2005 prices**

Year <sup>1/</sup>	Quarter <sup>2/</sup>	Agriculture, forestry and fishing	Mining and quarrying	Manufacturing	Electricity, gas and water	Construction	Wholesale, retail and motor trade; catering and accommodation	Transport, storage and communication	Finance, real estate and business services	General government services	Personal services	Total value added at basic prices	Taxes less subsidies on products	GDP at market prices	Total value added at basic prices excluding agriculture
2003		0,7	3,4	-1,5	3,0	7,7	2,7	6,3	4,8	2,8	5,6	3,0	2,7	2,9	3,1
2004		0,9	1,5	4,9	6,8	9,1	5,4	4,9	7,1	1,9	1,7	4,5	5,0	4,6	4,6
2005		2,8	1,0	6,2	5,3	11,9	7,0	5,3	5,7	4,3	3,8	5,3	5,0	5,3	5,4
2006		-5,5	-0,6	6,4	3,4	10,4	6,0	5,1	9,6	3,1	5,2	5,5	6,2	5,6	5,8
2007		2,7	0,0	5,2	3,4	15,0	5,3	6,6	7,9	3,9	5,6	5,6	5,2	5,5	5,7
2008		16,1	-5,6	2,6	-3,1	8,5	1,0	4,0	7,4	4,5	3,9	3,8	2,5	3,6	3,5
2009		-1,6	-5,4	-10,1	-1,4	7,8	-1,2	0,9	1,0	3,9	-0,9	-1,3	-3,1	-1,5	-1,3
2010		0,4	5,7	5,5	2,5	0,7	3,8	2,0	2,2	3,1	0,4	3,1	3,7	3,1	3,2
2011		-0,1	0,3	3,3	1,5	0,3	4,4	3,1	4,7	4,2	2,3	3,4	5,0	3,6	3,5
2012		2,0	-3,6	2,1	-1,6	2,3	3,8	2,4	3,7	2,8	2,1	2,4	2,7	2,5	2,4
2003	1	0,4	2,3	-3,7	-0,2	6,7	0,5	7,4	9,9	5,6	7,6	3,7	4,4	2,6	3,8
	2	-3,4	4,5	-5,0	0,1	5,4	1,7	4,7	5,5	2,5	6,3	2,0	1,5	2,0	2,2
	3	-10,9	5,1	-3,9	1,8	5,1	2,7	4,3	6,2	2,5	4,5	2,2	1,8	2,2	2,6
	4	-2,5	1,9	-2,2	4,6	7,9	2,3	7,0	3,5	2,2	1,5	2,1	3,9	2,3	2,3
2004	1	2,2	2,0	12,4	7,8	9,1	5,5	3,8	11,8	-0,2	0,9	6,4	4,8	6,2	6,5
	2	3,8	-4,8	10,1	8,0	11,6	7,7	3,9	7,9	2,8	-0,9	5,4	8,0	5,7	5,5
	3	9,0	11,1	9,9	14,3	11,4	8,6	5,7	4,1	2,0	2,4	6,6	7,7	6,7	6,5
	4	11,0	-9,9	1,5	8,0	11,9	9,9	5,3	5,9	5,0	3,0	4,3	5,0	4,3	4,1
2005	1	-2,2	13,1	-0,1	0,1	11,3	5,0	4,7	4,1	7,2	4,0	4,5	0,8	4,1	4,7
	2	-0,7	-3,1	16,4	3,8	12,3	6,2	6,0	7,9	4,7	5,8	7,2	8,5	7,4	7,5
	3	1,0	-2,9	9,5	3,1	13,3	5,8	5,5	7,5	2,3	5,1	5,6	5,6	5,6	5,7
	4	1,4	-2,2	-0,3	8,7	11,7	8,1	5,2	2,7	0,0	4,2	2,8	2,2	2,7	2,8
2006	1	-9,5	-7,6	5,6	2,9	6,8	4,4	5,7	16,4	5,6	7,4	6,3	5,6	6,2	6,8
	2	-12,7	6,7	7,9	1,1	11,3	6,0	5,1	10,8	2,6	4,7	6,3	10,8	6,7	6,8
	3	-6,8	5,9	8,1	0,8	11,3	5,9	4,0	10,4	2,0	4,2	6,1	3,5	5,8	6,4
	4	-0,9	6,9	7,7	2,6	10,0	5,8	3,0	6,0	5,3	3,0	5,6	12,7	6,4	5,8
2007	1	6,2	0,0	6,0	6,2	23,3	5,5	9,4	7,6	7,2	6,7	6,9	3,5	6,5	6,9
	2	9,4	-9,9	1,7	3,6	15,1	4,9	9,8	5,0	0,0	6,3	3,4	0,6	3,1	3,3
	3	4,3	-0,7	-0,1	4,0	8,7	4,7	6,1	11,1	3,7	6,9	5,0	5,2	5,0	5,0
	4	13,6	-5,9	9,0	0,3	22,0	3,9	4,4	9,0	3,9	7,5	6,3	3,9	6,0	6,1
2008	1	24,2	-16,2	-0,2	-15,8	0,0	3,4	2,8	9,1	8,0	2,0	3,0	3,1	3,0	2,5
	2	12,9	10,1	17,2	-1,9	6,0	-3,6	3,1	2,1	2,1	1,5	4,8	1,3	4,4	4,6
	3	28,2	-9,7	-6,6	13,7	11,5	-5,6	3,3	7,9	6,1	3,2	1,7	2,3	1,8	1,1
	4	9,5	-0,3	-17,6	-13,4	2,2	-0,4	1,8	6,0	3,2	2,0	-1,4	-3,6	-1,7	-1,7
2009	1	-6,2	-23,6	-24,0	-4,3	16,6	-0,6	-1,6	-2,1	4,8	-2,6	-6,1	-7,7	-6,3	-6,1
	2	-16,0	12,9	-10,3	2,1	1,9	-2,0	-0,4	-4,4	5,0	-1,4	-2,2	-7,5	-2,7	-1,7
	3	-12,8	-5,3	9,0	3,5	8,1	1,8	2,3	0,6	1,2	-4,1	1,6	2,2	1,7	2,1
	4	-9,4	5,7	11,2	1,2	3,3	1,9	2,8	2,0	2,0	-4,2	3,1	6,6	3,5	3,4
2010	1	3,7	19,2	6,6	6,1	-1,7	4,8	0,9	3,4	3,2	2,4	4,5	5,2	4,6	4,6
	2	10,8	-21,0	7,7	-0,5	-2,5	6,9	2,9	3,9	4,1	4,2	3,0	2,7	3,0	2,8
	3	14,6	31,8	-2,4	-1,0	-0,9	4,6	2,3	2,0	3,3	2,9	3,6	4,8	3,7	3,3
	4	9,0	15,7	4,8	5,9	0,9	5,0	2,8	3,0	4,6	2,3	4,6	3,8	4,5	4,5
2011	1	-4,5	-6,0	12,5	2,3	1,2	2,2	3,8	6,8	4,8	1,8	4,8	7,7	5,1	5,0
	2	-9,2	-1,8	-4,8	0,9	0,2	5,0	4,1	4,9	4,1	2,4	1,8	4,0	2,0	2,1
	3	-5,9	-17,4	-0,7	-1,9	0,1	5,5	2,0	6,1	3,1	1,8	1,5	4,0	1,8	1,7
	4	-4,0	-1,6	4,2	0,8	0,7	4,9	2,7	4,8	4,9	2,2	3,5	5,9	3,8	3,7
2012	1	4,4	-12,8	6,1	-2,1	5,7	4,0	2,7	4,4	1,0	1,7	2,6	0,8	2,4	2,6
	2	9,0	25,4	-1,1	-5,2	0,3	2,9	2,4	2,0	1,4	2,2	2,7	2,2	2,6	2,5
	3	7,1	-9,1	0,9	0,6	3,4	2,1	1,4	1,1	3,5	2,4	1,3	1,4	1,3	1,1
	4	9,9	-7,7	4,4	-2,6	4,6	1,8	2,0	2,3	4,6	2,4	2,5	1,2	2,3	2,3
2013	1	-4,4	13,4	-7,9	-2,8	2,5	2,1	2,1	3,3	0,1	1,2	0,6	2,3	0,8	0,7
	2	-3,0	-5,4	11,7	5,1	2,3	3,1	1,5	3,5	0,2	1,6	3,3	3,1	3,2	3,4
	3	3,6	11,4	-6,6	3,8	2,1	1,3	2,6	1,3	0,4	1,6	0,6	2,1	0,7	0,5

1/ The percentage change is the growth rate from the previous year.

2/ The annualised percentage change is the growth rate for a given quarter from the previous quarter and compounded to an annual rate.



**Table 6 - Quarterly compensation of employees at current prices (R million)**

Year	Quarter	Agriculture, forestry and fishing	Mining and quarrying	Manufacturing	Electricity, gas and water	Construction	Wholesale, retail and motor trade; catering and accommodation	Transport, storage and communication	Finance, real estate and business services	General government services	Personal services	Total compensation of employees
2003		13 455	35 193	105 207	10 724	15 388	74 129	41 779	83 620	151 039	48 454	578 988
2004		12 912	37 905	112 552	11 201	17 040	82 791	46 041	96 945	166 287	53 280	636 954
2005		12 143	40 877	120 743	12 291	19 455	90 849	50 515	112 934	181 765	57 446	699 018
2006		12 840	48 331	133 628	13 659	21 884	100 805	54 060	128 669	199 990	63 687	777 553
2007		14 651	57 015	152 608	15 186	29 831	108 686	57 979	149 792	225 220	71 411	882 379
2008		16 540	68 438	173 833	17 740	34 840	120 774	61 386	167 630	252 574	78 117	991 872
2009		17 979	73 519	183 596	19 718	39 279	128 668	64 378	171 329	300 326	84 522	1 083 314
2010		18 719	82 610	202 337	21 644	41 486	143 468	73 045	193 224	345 096	91 381	1 213 010
2011		19 967	92 914	217 510	23 857	44 893	161 582	81 240	214 206	378 982	99 443	1 334 595
2012		21 492	102 555	236 663	26 543	48 998	174 734	87 534	234 282	411 884	106 917	1 451 602
2003	1	3 206	8 798	24 878	2 496	3 517	16 747	9 705	19 187	37 038	11 761	137 333
	2	3 559	8 392	25 499	2 634	3 658	17 682	10 361	20 419	37 686	12 057	141 947
	3	3 527	8 821	25 867	2 614	3 882	18 345	10 442	21 756	38 056	12 179	145 489
	4	3 163	9 181	28 963	2 980	4 331	21 356	11 270	22 258	38 259	12 457	154 218
2004	1	3 172	9 222	26 414	2 515	3 846	18 308	10 066	22 315	41 826	13 355	151 038
	2	3 383	9 269	27 410	2 793	4 060	19 661	10 662	23 390	41 298	13 148	155 074
	3	3 353	9 500	27 778	2 707	4 316	20 333	11 731	25 212	40 446	13 150	158 526
	4	3 004	9 915	30 950	3 186	4 818	24 489	13 582	26 028	42 717	13 627	172 316
2005	1	2 946	9 629	28 502	2 764	4 158	20 140	11 103	25 127	44 347	14 279	162 994
	2	3 167	9 673	29 144	3 068	4 714	21 266	12 581	27 407	44 448	14 257	169 724
	3	3 196	10 516	29 602	2 970	4 983	22 908	13 147	29 607	45 521	14 372	176 822
	4	2 834	11 058	33 496	3 490	5 600	26 535	13 684	30 793	47 449	14 538	189 477
2006	1	3 103	11 309	30 806	3 075	4 747	22 738	12 372	29 497	48 786	15 669	182 102
	2	3 329	11 404	32 254	3 439	5 320	24 019	13 218	31 737	45 791	15 838	186 349
	3	3 361	12 338	32 764	3 326	5 605	24 930	13 737	33 340	51 787	15 963	197 151
	4	3 047	13 280	37 804	3 819	6 212	29 118	14 733	34 095	53 626	16 216	211 950
2007	1	3 559	13 262	34 882	3 346	6 068	24 174	13 349	34 215	53 116	17 490	203 461
	2	3 782	13 548	36 598	3 762	7 327	25 762	14 129	36 703	53 645	17 770	213 026
	3	3 830	14 510	37 576	3 743	7 732	27 187	14 738	38 499	57 582	17 856	223 253
	4	3 480	15 695	43 552	4 335	8 704	31 563	15 763	40 375	60 877	18 295	242 639
2008	1	4 156	15 970	39 685	3 855	6 993	26 881	14 216	39 440	59 085	19 296	229 576
	2	4 212	16 454	41 691	4 391	8 584	29 229	15 004	40 536	60 477	19 377	239 954
	3	4 226	17 475	43 151	4 445	9 233	30 092	15 747	44 342	65 298	19 594	253 602
	4	3 946	18 539	49 306	5 049	10 030	34 572	16 421	43 312	67 714	19 851	268 739
2009	1	4 623	17 832	42 109	4 269	8 088	28 864	14 654	40 551	69 344	20 809	251 143
	2	4 654	17 729	43 002	4 656	9 565	30 574	15 608	41 307	71 200	20 944	259 238
	3	4 570	18 708	45 922	5 061	10 110	32 661	16 595	45 091	73 230	21 375	273 324
	4	4 132	19 250	52 564	5 731	11 516	36 569	17 521	44 380	86 552	21 394	299 610
2010	1	4 784	19 558	46 584	4 716	8 684	31 714	16 739	45 913	84 082	22 468	285 241
	2	4 858	19 879	48 013	5 187	10 374	34 173	17 670	47 517	81 445	22 632	291 748
	3	4 747	21 603	49 598	5 481	10 624	36 068	18 721	50 012	87 013	23 063	306 930
	4	4 330	21 570	58 142	6 260	11 804	41 514	19 915	49 782	92 556	23 218	329 091
2011	1	5 021	21 719	50 756	5 271	9 494	36 175	18 133	51 220	91 760	24 510	314 059
	2	5 233	22 379	51 687	5 678	10 985	38 533	20 119	52 723	93 636	24 558	325 531
	3	5 088	23 478	52 917	5 959	11 816	40 492	20 759	55 446	97 576	25 273	338 804
	4	4 626	25 338	62 149	6 949	12 598	46 383	22 229	54 817	96 010	25 102	356 201
2012	1	5 390	24 481	55 043	5 825	10 323	39 720	19 482	57 471	98 270	26 512	342 517
	2	5 590	25 190	56 154	6 337	12 296	42 058	21 584	58 750	100 131	26 451	354 542
	3	5 490	25 462	57 753	6 663	12 716	43 722	22 342	58 926	104 836	27 105	365 014
	4	5 022	27 422	67 713	7 718	13 663	49 233	24 127	59 135	108 647	26 849	389 529
2013	1	5 806	26 762	59 950	6 435	11 196	42 710	21 085	59 650	106 658	28 232	368 484
	2	6 098	27 644	61 415	7 024	13 104	44 868	23 157	62 052	115 704	28 106	389 172
	3	5 968	27 702	63 090	7 368	13 434	46 443	23 766	63 151	117 345	28 638	396 905

**Table 7 - Quarterly gross operating surplus and net<sup>1</sup> other taxes on production  
(R million)**

Year	Quarter	Agriculture, forestry and fishing	Mining and quarrying	Manufacturing	Electricity, gas and water	Construction	Wholesale, retail and motor trade; catering and accommodation	Transport, storage and communication	Finance, real estate and business services	General government services	Personal services	Total gross operating surplus
2003		26 189	50 577	118 710	18 829	11 359	84 657	70 858	147 556	23 067	24 360	576 161
2004		26 578	53 294	131 415	18 975	14 999	93 654	78 745	164 340	24 276	27 371	633 645
2005		25 259	65 115	138 358	20 719	19 103	104 163	88 957	182 569	26 796	31 009	702 049
2006		32 511	83 970	140 874	23 287	24 274	115 026	99 715	210 642	30 126	34 341	794 766
2007		39 182	99 954	151 829	26 597	27 077	130 225	106 488	255 728	34 582	38 033	909 696
2008		44 007	128 088	166 790	28 162	37 381	150 714	128 396	270 957	40 716	40 668	1 035 879
2009		45 676	123 002	148 107	40 684	47 243	169 843	134 898	293 502	44 073	49 652	1 096 680
2010		44 049	145 619	143 218	41 436	50 413	217 342	149 801	314 194	46 820	57 459	1 210 351
2011		45 236	181 616	120 129	49 152	53 819	244 240	164 350	332 778	50 689	58 427	1 300 437
2012		49 526	167 541	104 320	57 931	56 638	280 750	169 840	363 611	54 913	63 589	1 368 659
2003	1	3 823	11 875	28 785	4 264	3 172	20 077	16 642	37 869	5 691	5 963	138 161
	2	11 965	13 197	28 604	4 886	3 002	19 600	16 946	37 450	5 735	6 102	147 486
	3	7 929	14 287	31 276	5 363	2 827	20 938	17 806	36 312	5 795	6 127	148 660
	4	2 472	11 218	30 045	4 315	2 358	24 041	19 465	35 925	5 846	6 169	141 855
2004	1	3 748	11 667	31 196	4 441	3 921	21 996	19 001	41 469	5 968	6 377	149 785
	2	10 779	14 149	31 145	4 799	3 887	21 100	19 428	39 386	5 888	6 854	157 416
	3	9 443	15 031	35 169	5 411	3 833	24 012	19 932	41 864	6 148	7 052	167 895
	4	2 608	12 446	33 905	4 324	3 358	26 546	20 384	41 621	6 272	7 087	158 550
2005	1	4 937	12 898	31 895	4 717	5 201	24 489	21 340	46 191	6 413	7 075	165 156
	2	8 400	18 020	34 480	5 341	4 805	23 943	21 044	45 567	6 547	7 696	175 844
	3	8 508	17 986	38 058	5 898	4 993	26 035	22 249	46 121	6 821	8 026	184 695
	4	3 414	16 211	33 924	4 763	4 104	29 696	24 324	44 691	7 015	8 211	176 354
2006	1	5 262	15 355	33 888	5 068	6 320	26 988	22 919	50 503	7 209	7 665	181 178
	2	9 985	20 284	33 846	6 062	6 083	26 412	24 215	50 495	7 382	8 611	193 376
	3	11 829	25 943	38 547	6 805	6 429	28 937	25 680	55 208	7 635	9 031	216 044
	4	5 435	22 388	34 593	5 351	5 442	32 688	26 900	54 436	7 900	9 035	204 169
2007	1	7 582	22 438	38 991	6 060	7 584	30 792	24 287	63 077	8 174	8 544	217 529
	2	14 985	25 932	35 798	7 089	6 819	30 154	26 017	60 022	8 479	10 050	225 345
	3	11 482	26 640	39 493	7 826	7 046	32 518	27 694	65 239	8 888	10 380	237 206
	4	5 133	24 945	37 548	5 622	5 628	36 760	28 490	67 390	9 041	9 060	229 617
2008	1	7 532	26 121	41 517	6 360	9 257	35 733	29 269	68 595	9 287	9 028	242 698
	2	17 769	34 436	41 464	7 561	8 942	35 562	31 911	66 494	9 934	10 871	264 943
	3	14 094	36 555	45 749	8 508	10 706	37 442	31 952	66 883	10 610	11 102	273 601
	4	4 612	30 976	38 060	5 733	8 476	41 978	35 266	68 985	10 885	9 666	254 636
2009	1	8 830	26 154	39 634	8 821	13 396	41 053	32 027	74 084	10 908	10 769	265 677
	2	20 380	32 309	35 478	10 692	12 615	40 633	33 745	72 020	10 869	13 313	282 055
	3	11 976	34 213	38 860	12 696	12 424	40 982	33 581	72 479	11 034	13 482	281 727
	4	4 490	30 326	34 134	8 476	8 808	47 175	35 545	74 919	11 262	12 088	267 222
2010	1	8 851	25 770	37 999	9 321	14 476	49 665	34 074	78 545	11 410	12 296	282 406
	2	22 182	37 330	35 642	11 197	13 396	53 475	37 366	77 153	11 586	15 474	314 801
	3	10 144	41 746	38 911	12 595	13 151	51 533	37 413	77 065	11 897	15 509	309 966
	4	2 871	40 774	30 666	8 323	9 390	62 668	40 948	81 431	11 927	14 180	303 178
2011	1	7 601	38 211	32 598	10 284	14 881	55 186	38 109	82 460	12 306	12 241	303 878
	2	19 629	44 700	29 560	13 701	14 201	58 989	41 356	81 289	12 416	15 099	330 940
	3	13 327	50 762	33 567	15 203	13 953	58 732	41 506	82 491	12 764	16 069	338 374
	4	4 678	47 943	24 404	9 964	10 784	71 333	43 379	86 538	13 203	15 017	327 244
2012	1	7 792	38 703	30 266	12 321	16 348	63 888	40 606	89 053	13 412	13 919	326 307
	2	24 723	42 948	25 790	16 115	14 727	67 909	42 810	88 572	13 521	16 465	353 580
	3	12 666	46 174	28 978	17 659	14 541	67 594	42 592	90 781	13 969	17 183	352 137
	4	4 345	39 716	19 286	11 836	11 022	81 360	43 832	95 205	14 011	16 023	336 635
2013	1	8 110	38 915	25 519	13 431	16 821	72 915	42 106	99 908	14 272	15 378	347 376
	2	26 592	39 029	22 739	17 637	15 821	76 177	43 590	100 875	14 730	17 313	374 503
	3	11 272	46 491	26 286	18 980	16 313	77 058	43 845	101 529	15 086	17 539	374 400

<sup>1</sup>/ Net other taxes on production equals other taxes on production minus other subsidies on production.



**Table 8 - Annual value added by industry and gross domestic product at current prices (R million)**

Industry	2003	2004	2005	2006	2007	2008	2009	2010	2011	2012
Agriculture, forestry and fishing	39 644	39 490	37 402	45 351	53 833	60 547	63 655	62 768	65 204	71 018
Agriculture	33 108	32 763	30 213	37 475	45 152	50 263	52 903	49 759	51 497	56 795
Forestry	5 564	5 735	5 959	6 312	6 939	8 125	8 458	10 469	11 160	11 536
Fishing	972	992	1 230	1 564	1 742	2 159	2 294	2 540	2 547	2 687
Mining and quarrying	85 770	91 199	105 992	132 301	156 970	196 526	196 521	228 230	274 530	270 096
Coal	15 841	16 675	18 178	21 343	23 736	38 213	42 066	50 565	59 227	66 796
Gold	22 628	20 629	21 671	25 637	30 605	31 870	31 913	36 435	44 254	43 898
Platinum group metals	21 567	24 285	29 687	38 772	45 383	51 943	53 738	63 123	78 730	61 056
Other metal ores	15 231	17 028	21 645	29 144	35 142	47 416	42 473	48 752	58 239	64 432
Other mining and quarrying <sup>1/</sup>	10 502	12 583	14 811	17 407	22 103	27 084	26 331	29 355	34 080	33 914
<b>Primary industries</b>	<b>125 414</b>	<b>130 688</b>	<b>143 394</b>	<b>177 652</b>	<b>210 802</b>	<b>257 073</b>	<b>260 176</b>	<b>290 997</b>	<b>339 734</b>	<b>341 113</b>
Manufacturing	223 917	243 967	259 101	274 502	304 438	340 623	331 703	345 555	337 639	340 983
Food, beverages and tobacco	35 442	39 158	44 404	50 576	56 297	64 748	65 358	77 399	80 743	88 567
Textiles, clothing and leather goods	10 556	11 006	10 654	10 659	10 827	10 216	10 247	11 157	9 225	8 869
Wood and paper, publishing and printing	21 953	21 729	23 065	24 615	28 053	30 549	29 630	29 827	29 937	31 726
Petroleum products, chemicals, rubber and plastic	55 830	62 659	62 637	62 026	69 169	81 874	78 915	79 149	71 239	65 707
Other non-metal mineral products	8 370	9 418	9 944	10 592	11 657	13 320	12 881	15 719	14 000	13 146
Metals, metal products, machinery and equipment	42 221	47 627	52 585	55 799	65 988	74 876	71 366	66 891	64 548	65 994
Electrical machinery and apparatus	6 478	6 354	6 932	7 326	8 134	8 239	7 918	8 036	7 510	8 190
Radio, TV, instruments, watches and clocks	3 166	3 247	3 435	3 857	4 050	4 116	4 104	4 291	4 578	4 672
Transport equipment	20 603	22 225	23 807	25 250	24 840	25 083	24 207	26 711	27 147	25 604
Furniture; other manufacturing <sup>1/</sup>	19 300	20 543	21 638	23 802	25 422	27 601	27 078	26 376	28 712	28 508
Electricity, gas and water	29 553	30 176	33 010	36 946	41 783	45 902	60 402	63 080	73 010	84 475
Electricity and gas	24 327	24 525	26 174	28 681	31 393	35 393	48 676	49 081	56 620	65 540
Water	5 226	5 651	6 836	8 265	10 390	10 510	11 726	13 998	16 390	18 934
Construction	26 747	32 039	38 558	46 158	56 908	72 221	86 522	91 899	98 712	105 636
<b>Secondary industries</b>	<b>280 217</b>	<b>306 181</b>	<b>330 669</b>	<b>357 607</b>	<b>403 129</b>	<b>458 745</b>	<b>478 627</b>	<b>500 534</b>	<b>509 360</b>	<b>531 094</b>
Wholesale, retail and motor trade, catering and accommodation	158 786	176 445	195 012	215 830	238 910	271 488	298 511	360 810	405 823	455 484
Wholesale trade	51 458	57 134	62 174	68 592	74 442	84 954	94 035	117 857	133 186	151 632
Retail trade; repair of household goods <sup>1/</sup>	75 059	82 525	91 795	101 022	110 763	125 977	138 533	166 095	186 392	206 761
Motor trade; repair of motor vehicles	20 646	23 985	27 021	31 246	35 698	39 198	42 452	52 310	60 986	69 031
Catering and accommodation	11 623	12 801	14 023	14 970	18 008	21 359	23 492	24 549	25 258	28 060
Transport, storage and communication	112 637	124 786	139 472	153 775	164 467	189 782	199 276	222 845	245 590	257 374
Transport <sup>1/</sup>	65 952	74 677	84 454	96 959	106 729	132 331	140 496	158 895	173 345	185 072
Communication	46 685	50 109	55 018	56 816	57 738	57 451	58 780	63 950	72 245	72 302
Finance, real estate and business services	231 176	261 285	295 503	339 311	405 520	438 587	464 831	507 418	546 984	597 893
Finance and insurance	100 183	116 537	130 959	156 586	198 437	215 092	204 539	225 443	251 589	278 915
Real estate	74 266	83 066	94 525	105 872	120 051	127 246	144 202	150 658	156 638	167 798
Business services <sup>1/</sup>	56 726	61 682	70 019	76 853	87 032	96 250	116 090	131 316	138 756	151 180
General government services	174 106	190 563	208 561	230 116	259 802	293 290	344 399	391 916	429 671	466 797
Central government	64 068	67 826	76 603	86 756	97 277	107 932	125 520	139 039	150 343	160 916
Provincial government	85 070	93 835	101 411	110 643	125 563	147 749	175 580	204 669	226 176	245 927
Local government	24 968	28 902	30 547	32 717	36 962	37 609	43 299	48 207	53 152	59 954
Personal services <sup>1/</sup>	72 814	80 651	88 455	98 028	109 445	118 785	134 174	148 839	157 870	170 506
<b>Tertiary industries</b>	<b>749 519</b>	<b>833 731</b>	<b>927 003</b>	<b>1 037 060</b>	<b>1 178 144</b>	<b>1 311 933</b>	<b>1 441 192</b>	<b>1 631 827</b>	<b>1 785 938</b>	<b>1 948 054</b>
<b>All industries at basic prices</b>	<b>1 155 150</b>	<b>1 270 600</b>	<b>1 401 066</b>	<b>1 572 319</b>	<b>1 792 075</b>	<b>2 027 751</b>	<b>2 179 995</b>	<b>2 423 358</b>	<b>2 635 032</b>	<b>2 820 261</b>
Taxes on products	121 070	147 449	175 667	203 514	230 000	242 456	237 117	264 191	310 262	338 805
Less: Subsidies on products	3 683	2 776	5 652	8 411	5 891	13 723	9 036	13 781	12 565	20 086
<b>GDP at market prices</b>	<b>1 272 537</b>	<b>1 415 273</b>	<b>1 571 081</b>	<b>1 767 422</b>	<b>2 016 184</b>	<b>2 256 484</b>	<b>2 408 076</b>	<b>2 673 768</b>	<b>2 932 729</b>	<b>3 138 980</b>

<sup>1/</sup> Includes estimates of the informal sector.

**Table 9 - Percentage contribution to total nominal value added at basic prices by industry**

Industry	2003	2004	2005	2006	2007	2008	2009	2010	2011	2012
Agriculture, forestry and fishing	3,4	3,1	2,7	2,9	3,0	3,0	2,9	2,6	2,5	2,5
Agriculture	2,9	2,6	2,2	2,4	2,5	2,5	2,4	2,1	2,0	2,0
Forestry	0,5	0,5	0,4	0,4	0,4	0,4	0,4	0,4	0,4	0,4
Fishing	0,1	0,1	0,1	0,1	0,1	0,1	0,1	0,1	0,1	0,1
Mining and quarrying	7,4	7,2	7,6	8,4	8,8	9,7	9,0	9,4	10,4	9,6
Coal	1,4	1,3	1,3	1,4	1,3	1,9	1,9	2,1	2,2	2,4
Gold	2,0	1,6	1,5	1,6	1,7	1,6	1,5	1,5	1,7	1,6
Platinum group metals	1,9	1,9	2,1	2,5	2,5	2,6	2,5	2,6	3,0	2,2
Other metal ores	1,3	1,3	1,5	1,9	2,0	2,3	1,9	2,0	2,2	2,3
Other mining and quarrying <sup>1/</sup>	0,9	1,0	1,1	1,1	1,2	1,3	1,2	1,2	1,3	1,2
<b>Primary industries</b>	<b>10,9</b>	<b>10,3</b>	<b>10,2</b>	<b>11,3</b>	<b>11,8</b>	<b>12,7</b>	<b>11,9</b>	<b>12,0</b>	<b>12,9</b>	<b>12,1</b>
Manufacturing	19,4	19,2	18,5	17,5	17,0	16,8	15,2	14,3	12,8	12,1
Food, beverages and tobacco	3,1	3,1	3,2	3,2	3,1	3,2	3,0	3,2	3,1	3,1
Textiles, clothing and leather goods	0,9	0,9	0,8	0,7	0,6	0,5	0,5	0,5	0,4	0,3
Wood and paper; publishing and printing	1,9	1,7	1,6	1,6	1,6	1,5	1,4	1,2	1,1	1,1
Petroleum products, chemicals, rubber and plastic	4,8	4,9	4,5	3,9	3,9	4,0	3,6	3,3	2,7	2,3
Other non-metal mineral products	0,7	0,7	0,7	0,7	0,7	0,7	0,6	0,6	0,5	0,5
Metals, metal products, machinery and equipment	3,7	3,7	3,8	3,5	3,7	3,7	3,3	2,8	2,4	2,3
Electrical machinery and apparatus	0,6	0,5	0,5	0,5	0,5	0,4	0,4	0,3	0,3	0,3
Radio, TV, instruments, watches and clocks	0,3	0,3	0,2	0,2	0,2	0,2	0,2	0,2	0,2	0,2
Transport equipment	1,8	1,7	1,7	1,6	1,4	1,2	1,1	1,1	1,0	0,9
Furniture; other manufacturing <sup>1/</sup>	1,7	1,6	1,5	1,5	1,4	1,4	1,2	1,1	1,1	1,0
Electricity, gas and water	2,6	2,4	2,4	2,3	2,3	2,3	2,8	2,6	2,8	3,0
Electricity and gas	2,1	1,9	1,9	1,8	1,8	1,7	2,2	2,0	2,1	2,3
Water	0,5	0,4	0,5	0,5	0,6	0,5	0,5	0,6	0,6	0,7
Construction	2,3	2,5	2,8	2,9	3,2	3,6	4,0	3,8	3,7	3,7
<b>Secondary industries</b>	<b>24,3</b>	<b>24,1</b>	<b>23,6</b>	<b>22,7</b>	<b>22,5</b>	<b>22,6</b>	<b>22,0</b>	<b>20,7</b>	<b>19,3</b>	<b>18,8</b>
Wholesale, retail and motor trade, catering and accommodation	13,7	13,9	13,9	13,7	13,3	13,4	13,7	14,9	15,4	16,2
Wholesale trade	4,5	4,5	4,4	4,4	4,2	4,2	4,3	4,9	5,1	5,4
Retail trade; repair of household goods <sup>1/</sup>	6,5	6,5	6,6	6,4	6,2	6,2	6,4	6,9	7,1	7,3
Motor trade; repair of motor vehicles	1,8	1,9	1,9	2,0	2,0	1,9	1,9	2,2	2,3	2,4
Catering and accommodation	1,0	1,0	1,0	1,0	1,0	1,1	1,1	1,0	1,0	1,0
Transport, storage and communication	9,8	9,8	10,0	9,8	9,2	9,4	9,1	9,2	9,3	9,1
Transport <sup>1/</sup>	5,7	5,9	6,0	6,2	6,0	6,5	6,4	6,6	6,6	6,6
Communication	4,0	3,9	3,9	3,6	3,2	2,8	2,7	2,6	2,7	2,6
Finance, real estate and business services	20,0	20,6	21,1	21,6	22,6	21,6	21,3	20,9	20,8	21,2
Finance and insurance	8,7	9,2	9,3	10,0	11,1	10,6	9,4	9,3	9,5	9,9
Real estate	6,4	6,5	6,7	6,7	6,7	6,3	6,6	6,2	5,9	5,9
Business services <sup>1/</sup>	4,9	4,9	5,0	4,9	4,9	4,7	5,3	5,4	5,3	5,4
General government services	15,1	15,0	14,9	14,6	14,5	14,5	15,8	16,2	16,3	16,6
Central government	5,5	5,3	5,5	5,5	5,4	5,3	5,8	5,7	5,7	5,7
Provincial government	7,4	7,4	7,2	7,0	7,0	7,3	8,1	8,4	8,6	8,7
Local government	2,2	2,3	2,2	2,1	2,1	1,9	2,0	2,0	2,0	2,1
Personal services <sup>1/</sup>	6,3	6,3	6,3	6,2	6,1	5,9	6,2	6,1	6,0	6,0
<b>Tertiary industries</b>	<b>64,9</b>	<b>65,6</b>	<b>66,2</b>	<b>66,0</b>	<b>65,7</b>	<b>64,7</b>	<b>66,1</b>	<b>67,3</b>	<b>67,8</b>	<b>69,1</b>
<b>All industries at basic prices</b>	<b>100,0</b>	<b>100,0</b>	<b>100,0</b>	<b>100,0</b>	<b>100,0</b>	<b>100,0</b>	<b>100,0</b>	<b>100,0</b>	<b>100,0</b>	<b>100,0</b>

<sup>1/</sup> Includes estimates of the informal sector.

**Table 10 - Annual value added by industry and gross domestic product at constant 2005 prices (R million)**

Industry	2003	2004	2005	2006	2007	2008	2009	2010	2011	2012
Agriculture, forestry and fishing	36 070	36 380	37 402	35 359	36 301	42 143	41 454	41 614	41 587	42 433
Agriculture	29 413	29 501	30 213	28 091	28 879	34 333	32 738	33 093	32 908	33 704
Forestry	5 501	5 685	5 959	6 023	6 168	6 685	7 564	7 239	7 298	7 323
Fishing	1 156	1 194	1 230	1 245	1 254	1 126	1 153	1 281	1 381	1 406
Mining and quarrying	103 355	104 915	105 992	105 364	105 336	99 396	94 057	99 383	99 687	96 082
Coal	17 596	18 040	18 178	18 159	18 462	18 813	18 587	19 128	18 710	19 343
Gold	27 155	24 921	21 671	20 031	18 537	15 865	14 960	13 991	13 635	12 212
Platinum group metals	26 005	27 083	29 687	30 311	29 790	27 021	26 592	28 151	28 303	24 921
Other metal ores	20 738	20 875	21 645	22 163	22 875	23 780	23 150	26 595	28 329	29 469
Other mining and quarrying <sup>1/</sup>	11 861	13 996	14 811	14 700	15 672	13 918	10 769	11 519	10 711	10 137
<b>Primary industries</b>	<b>139 425</b>	<b>141 295</b>	<b>143 394</b>	<b>140 723</b>	<b>141 637</b>	<b>141 539</b>	<b>135 511</b>	<b>140 997</b>	<b>141 274</b>	<b>138 516</b>
Manufacturing	232 581	243 965	259 101	275 782	290 246	297 889	267 723	282 509	291 785	297 808
Food, beverages and tobacco	40 027	41 963	44 403	47 009	49 339	49 862	47 422	50 856	49 668	50 538
Textiles, clothing and leather goods	10 042	10 940	10 654	11 013	11 732	12 548	12 689	13 381	12 892	12 896
Wood and paper; publishing and printing	21 520	22 425	23 065	23 660	24 637	25 048	22 184	24 245	24 761	25 219
Petroleum products, chemicals, rubber and plastic	55 746	58 385	62 637	67 060	69 726	68 849	65 319	67 573	72 989	77 031
Other non-metal mineral products	9 574	9 501	9 944	10 500	11 042	11 183	8 546	9 521	9 994	10 024
Metals, metal products, machinery and equipment	46 687	49 842	52 585	56 395	60 529	64 679	51 690	53 814	56 095	55 965
Electrical machinery and apparatus	5 882	5 963	6 932	7 677	8 097	8 551	8 195	8 452	8 616	8 509
Radio, TV, instruments, watches and clocks	2 915	3 174	3 435	3 826	4 001	4 167	3 969	4 131	4 636	4 872
Transport equipment	20 024	21 177	23 807	25 878	27 619	27 931	25 019	26 822	28 764	29 487
Furniture; other manufacturing <sup>1/</sup>	20 164	20 595	21 638	22 764	23 524	25 070	22 688	23 714	23 371	23 268
Electricity, gas and water	29 344	31 335	33 010	34 139	35 294	34 196	33 712	34 538	35 049	34 476
Electricity and gas	22 547	24 568	26 174	27 302	27 522	27 057	25 930	26 446	26 743	25 993
Water	6 797	6 767	6 836	6 837	7 772	7 139	7 782	8 093	8 306	8 483
Construction	31 575	34 451	38 558	42 582	48 971	53 145	57 279	57 707	57 869	59 206
<b>Secondary industries</b>	<b>293 500</b>	<b>309 751</b>	<b>330 669</b>	<b>352 503</b>	<b>374 511</b>	<b>385 230</b>	<b>358 713</b>	<b>374 754</b>	<b>384 704</b>	<b>391 491</b>
Wholesale, retail and motor trade, catering and accommodation	172 845	182 175	195 012	206 636	217 607	219 749	217 074	225 338	235 295	244 278
Wholesale trade	56 234	58 999	62 174	65 294	68 289	70 252	69 019	70 251	72 744	76 142
Retail trade; repair of household goods <sup>1/</sup>	81 594	85 322	91 795	96 539	100 799	101 531	101 540	103 156	107 327	110 640
Motor trade; repair of motor vehicles	22 245	24 565	27 021	30 469	33 401	32 886	31 936	35 236	38 988	40 877
Catering and accommodation	12 772	13 289	14 023	14 334	15 118	15 080	14 578	16 695	16 236	16 618
Transport, storage and communication	126 287	132 459	139 472	146 607	156 289	162 522	163 999	167 313	172 530	176 699
Transport <sup>1/</sup>	77 692	82 052	84 454	86 798	91 575	93 271	91 355	91 589	94 174	96 114
Communication	48 595	50 407	55 018	59 809	64 714	69 251	72 645	75 725	78 356	80 585
Finance, real estate and business services	261 123	279 544	295 504	324 002	349 501	375 240	378 987	387 189	405 479	420 473
Finance and insurance	110 579	122 683	130 958	152 970	172 485	193 811	189 153	197 902	213 874	225 692
Real estate	92 912	92 542	94 526	97 578	100 734	103 394	107 204	106 866	108 215	109 892
Business services <sup>1/</sup>	57 632	64 319	70 020	73 454	76 282	78 036	82 630	82 421	83 391	84 890
General government services	196 193	199 947	208 561	214 947	223 284	233 416	242 542	250 014	260 494	267 714
Central government	71 020	72 355	76 603	79 131	81 905	84 115	85 831	86 214	90 151	92 928
Provincial government	95 737	97 733	101 411	105 029	109 097	114 893	119 540	124 110	128 916	131 720
Local government	29 436	29 859	30 547	30 787	32 282	34 408	37 171	39 690	41 427	43 066
Personal services <sup>1/</sup>	83 756	85 219	88 455	93 073	98 247	102 106	101 233	101 671	104 026	106 181
<b>Tertiary industries</b>	<b>840 204</b>	<b>879 344</b>	<b>927 003</b>	<b>985 265</b>	<b>1 044 928</b>	<b>1 093 033</b>	<b>1 103 835</b>	<b>1 131 524</b>	<b>1 177 824</b>	<b>1 215 346</b>
<b>All industries at basic prices</b>	<b>1 273 129</b>	<b>1 330 390</b>	<b>1 401 066</b>	<b>1 478 492</b>	<b>1 561 076</b>	<b>1 619 802</b>	<b>1 598 060</b>	<b>1 647 275</b>	<b>1 703 801</b>	<b>1 745 353</b>
Taxes on products	159 329	167 307	175 667	186 594	196 387	201 326	195 286	202 378	212 415	218 132
Less: Subsidies on products	5 136	5 367	5 652	5 964	6 298	6 534	6 447	6 645	6 873	7 041
<b>GDP at market prices</b>	<b>1 427 322</b>	<b>1 492 330</b>	<b>1 571 081</b>	<b>1 659 122</b>	<b>1 751 165</b>	<b>1 814 594</b>	<b>1 786 899</b>	<b>1 843 008</b>	<b>1 909 343</b>	<b>1 956 444</b>

<sup>1/</sup> Includes estimates of the informal sector.

**Table 11 - Percentage change <sup>2</sup> in the annual value added by industry and gross domestic product at constant 2005 prices**

Industry	2003	2004	2005	2006	2007	2008	2009	2010	2011	2012
Agriculture, forestry and fishing	0,7	0,9	2,8	-5,5	2,7	16,1	-1,6	0,4	-0,1	2,0
Agriculture	0,4	0,3	2,4	-7,0	2,8	18,9	-4,6	1,1	-0,6	2,4
Forestry	0,8	3,3	4,8	1,1	2,4	8,4	13,2	-4,3	0,8	0,3
Fishing	6,3	3,3	3,0	1,2	0,7	-10,2	2,4	11,2	7,8	1,8
Mining and quarrying	3,4	1,5	1,0	-0,6	0,0	-5,6	-5,4	5,7	0,3	-3,6
Coal	7,8	2,5	0,8	-0,1	1,7	1,9	-1,2	2,9	-2,2	3,4
Gold	-5,7	-8,2	-13,0	-7,6	-7,5	-14,4	-5,7	-6,5	-2,5	-10,4
Platinum group metals	12,2	4,1	9,6	2,1	-1,7	-9,3	-1,6	5,9	0,5	-11,9
Other metal ores	1,7	0,7	3,7	2,4	3,2	4,0	-2,6	14,9	6,5	4,0
Other mining and quarrying <sup>1/</sup>	5,2	18,0	5,8	-0,7	6,6	-11,2	-22,6	7,0	-7,0	-5,4
<b>Primary industries</b>	<b>2,7</b>	<b>1,3</b>	<b>1,5</b>	<b>-1,9</b>	<b>0,6</b>	<b>-0,1</b>	<b>-4,3</b>	<b>4,0</b>	<b>0,2</b>	<b>-2,0</b>
Manufacturing	-1,5	4,9	6,2	6,4	5,2	2,6	-10,1	5,5	3,3	2,1
Food, beverages and tobacco	-1,3	4,8	5,8	5,9	5,0	1,1	-4,9	7,2	-2,3	1,8
Textiles, clothing and leather goods	2,1	8,9	-2,6	3,4	6,5	7,0	1,1	5,4	-3,6	0,0
Wood and paper; publishing and printing	-3,6	4,2	2,9	2,6	4,1	1,7	-11,4	9,3	2,1	1,9
Petroleum products, chemicals, rubber and plastic	-2,7	4,7	7,3	7,1	4,0	-1,3	-5,1	3,5	8,0	5,5
Other non-metal mineral products	-3,3	-0,8	4,7	5,6	5,2	1,3	-23,6	11,4	5,0	0,3
Metals, metal products, machinery and equipment	0,9	6,8	5,5	7,2	7,3	6,9	-20,1	4,1	4,2	-0,2
Electrical machinery and apparatus	-3,8	1,4	16,3	10,7	5,5	5,6	-4,2	3,1	1,9	-1,2
Radio, TV, instruments, watches and clocks	3,4	8,9	8,2	11,4	4,6	4,1	-4,8	4,1	12,2	5,1
Transport equipment	-4,8	5,8	12,4	8,7	6,7	1,1	-10,4	7,2	7,2	2,5
Furniture; other manufacturing <sup>1/</sup>	1,0	2,1	5,1	5,2	3,3	6,6	-9,5	4,5	-1,4	-0,4
Electricity, gas and water	3,0	6,8	5,3	3,4	3,4	-3,1	-1,4	2,5	1,5	-1,6
Electricity and gas	2,6	9,0	6,5	4,3	0,8	-1,7	-4,2	2,0	1,1	-2,8
Water	4,0	-0,4	1,0	0,0	13,7	-8,1	9,0	4,0	2,6	2,1
Construction	7,7	9,1	11,9	10,4	15,0	8,5	7,8	0,7	0,3	2,3
<b>Secondary industries</b>	<b>-0,2</b>	<b>5,5</b>	<b>6,8</b>	<b>6,6</b>	<b>6,2</b>	<b>2,9</b>	<b>-6,9</b>	<b>4,5</b>	<b>2,7</b>	<b>1,8</b>
Wholesale, retail and motor trade, catering and accommodation	2,7	5,4	7,0	6,0	5,3	1,0	-1,2	3,8	4,4	3,8
Wholesale trade	1,0	4,9	5,4	5,0	4,6	2,9	-1,8	1,8	3,5	4,7
Retail trade; repair of household goods <sup>1/</sup>	2,6	4,6	7,6	5,2	4,4	0,7	0,0	1,6	4,0	3,1
Motor trade; repair of motor vehicles	6,5	10,4	10,0	12,8	9,6	-1,5	-2,9	10,3	10,6	4,8
Catering and accommodation	4,1	4,0	5,5	2,2	5,5	-0,3	-3,3	14,5	-2,7	2,4
Transport, storage and communication	6,3	4,9	5,3	5,1	6,6	4,0	0,9	2,0	3,1	2,4
Transport <sup>1/</sup>	7,4	5,6	2,9	2,8	5,5	1,9	-2,1	0,3	2,8	2,1
Communication	4,6	3,7	9,1	8,7	8,2	7,0	4,9	4,2	3,5	2,8
Finance, real estate and business services	4,8	7,1	5,7	9,6	7,9	7,4	1,0	2,2	4,7	3,7
Finance and insurance	6,9	10,9	6,7	16,8	12,8	12,4	-2,4	4,6	8,1	5,5
Real estate	0,1	-0,4	2,1	3,2	3,2	2,6	3,7	-0,3	1,3	1,5
Business services <sup>1/</sup>	8,8	11,6	8,9	4,9	3,8	2,3	5,9	-0,3	1,2	1,8
General government services	2,8	1,9	4,3	3,1	3,9	4,5	3,9	3,1	4,2	2,8
Central government	3,9	1,9	5,9	3,3	3,5	2,7	2,0	0,4	4,6	3,1
Provincial government	0,0	2,1	3,8	3,6	3,9	5,3	4,0	3,8	3,9	2,2
Local government	9,7	1,4	2,3	0,8	4,9	6,6	8,0	6,8	4,4	4,0
Personal services <sup>1/</sup>	5,6	1,7	3,8	5,2	5,6	3,9	-0,9	0,4	2,3	2,1
<b>Tertiary industries</b>	<b>4,2</b>	<b>4,7</b>	<b>5,4</b>	<b>6,3</b>	<b>6,1</b>	<b>4,6</b>	<b>1,0</b>	<b>2,5</b>	<b>4,1</b>	<b>3,2</b>
<b>All industries at basic prices</b>	<b>3,0</b>	<b>4,5</b>	<b>5,3</b>	<b>5,5</b>	<b>5,6</b>	<b>3,8</b>	<b>-1,3</b>	<b>3,1</b>	<b>3,4</b>	<b>2,4</b>
Taxes on products	2,7	5,0	5,0	6,2	5,2	2,5	-3,0	3,6	5,0	2,7
Less: Subsidies on products	3,0	4,5	5,3	5,5	5,6	3,7	-1,3	3,1	3,4	2,4
<b>GDP at market prices</b>	<b>2,9</b>	<b>4,6</b>	<b>5,3</b>	<b>5,6</b>	<b>5,5</b>	<b>3,6</b>	<b>-1,5</b>	<b>3,1</b>	<b>3,6</b>	<b>2,5</b>

<sup>1/</sup> Includes estimates of the informal sector.

<sup>2/</sup> The percentage change is the growth rate from one period to the next period.

**Table 12 - Annual production and generation of income accounts by industry at current prices (R million)**

Industry	2003	2004	2005	2006	2007	2008	2009	2010	2011	2012
<b>Agriculture, forestry and fishing</b>										
Output at basic prices	84 419	85 714	84 524	98 970	120 511	144 313	146 683	153 125	161 011	174 205
Intermediate consumption	44 775	46 224	47 122	53 619	66 678	83 766	83 028	90 357	95 808	103 187
Gross value added at basic prices	39 644	39 490	37 402	45 351	53 833	60 547	63 655	62 768	65 204	71 018
Other taxes on production	338	360	395	389	425	434	491	533	602	679
Other subsidies	-268	-190	-288	-521	-486	-688	-856	-806	-623	-1 025
Value added at factor cost	39 575	39 319	37 295	45 483	53 894	60 801	64 020	63 041	65 225	71 364
Compensation of employees	13 455	12 912	12 143	12 840	14 651	16 540	17 979	18 719	19 967	21 492
Gross operating surplus/mixed income	26 120	26 407	25 152	32 643	39 243	44 261	46 041	44 322	45 257	49 872
<b>Mining and quarrying</b>										
Output at basic prices	156 171	165 752	189 495	238 303	277 157	335 680	334 829	381 849	443 880	453 166
Intermediate consumption	70 401	74 553	83 503	106 002	120 187	139 154	138 308	153 619	169 349	183 070
Gross value added at basic prices	85 770	91 199	105 992	132 301	156 970	196 526	196 521	228 230	274 530	270 096
Other taxes on production	1 264	1 344	1 477	1 457	1 586	1 623	1 834	1 993	2 251	2 535
Other subsidies	-34	-24	-37	-66	-62	-87	-109	-102	-79	-130
Value added at factor cost	84 540	89 879	104 552	130 910	155 445	194 991	194 797	226 339	272 358	267 691
Compensation of employees	35 193	37 905	40 877	48 331	57 015	68 438	73 519	82 610	92 914	102 555
Gross operating surplus/mixed income	49 347	51 974	63 675	82 579	98 430	126 553	121 278	143 729	179 444	165 137
<b>Manufacturing</b>										
Output at basic prices	904 673	965 645	1 029 868	1 112 891	1 243 522	1 434 130	1 397 973	1 452 623	1 517 319	1 602 402
Intermediate consumption	680 756	721 678	770 767	838 389	939 084	1 093 507	1 066 270	1 107 068	1 179 680	1 261 419
Gross value added at basic prices	223 917	243 967	259 101	274 502	304 438	340 623	331 703	345 555	337 639	340 983
Other taxes on production	3 216	3 421	3 763	3 707	4 041	4 134	4 673	5 079	5 733	6 458
Other subsidies	-2 317	-1 636	-2 484	-4 478	-4 183	-5 925	-7 372	-6 940	-5 367	-8 825
Value added at factor cost	223 018	242 182	257 822	275 273	304 580	342 415	334 402	347 417	337 273	343 350
Compensation of employees	105 207	112 552	120 743	133 628	152 608	173 833	183 596	202 337	217 510	236 663
Gross operating surplus/mixed income	117 811	129 630	137 079	141 645	151 971	168 582	150 806	145 080	119 763	106 687
<b>Electricity, gas and water</b>										
Output at basic prices	59 886	63 022	67 253	75 990	84 647	96 882	119 196	128 185	144 352	162 782
Intermediate consumption	30 333	32 846	34 243	39 044	42 864	50 980	58 794	65 106	71 343	78 307
Gross value added at basic prices	29 553	30 176	33 010	36 946	41 783	45 902	60 402	63 080	73 010	84 475
Other taxes on production	338	360	395	390	424	434	490	533	602	678
Other subsidies	-484	-342	-519	-939	-876	-1 241	-1 544	-1 453	-1 124	-1 848
Value added at factor cost	29 699	30 158	33 134	37 495	42 234	46 709	61 455	64 000	73 532	85 644
Compensation of employees	10 724	11 201	12 291	13 659	15 186	17 740	19 718	21 644	23 857	26 543
Gross operating surplus/mixed income	18 975	18 957	20 843	23 836	27 049	28 969	41 737	42 356	49 674	59 101
<b>Construction</b>										
Output at basic prices	115 896	126 478	144 967	171 074	212 058	257 198	298 151	316 422	343 697	367 899
Intermediate consumption	89 149	94 439	106 409	124 916	155 150	184 978	211 629	224 524	244 986	262 263
Gross value added at basic prices	26 747	32 039	38 558	46 158	56 908	72 221	86 522	91 899	98 712	105 636
Other taxes on production	521	556	612	604	656	671	758	824	930	1 048
Other subsidies	0	0	0	0	0	0	0	0	0	0
Value added at factor cost	26 226	31 483	37 946	45 554	56 253	71 550	85 764	91 075	97 781	104 588
Compensation of employees	15 388	17 040	19 455	21 884	29 831	34 840	39 279	41 486	44 893	48 998
Gross operating surplus/mixed income	10 838	14 443	18 491	23 670	26 422	36 710	46 485	49 589	52 888	55 590
<b>Wholesale, retail and motor trade; catering and accommodation</b>										
Output at basic prices	304 983	333 236	367 192	410 558	456 082	499 281	547 970	631 640	699 863	772 292
Intermediate consumption	146 197	156 790	172 180	194 728	217 171	227 793	249 459	270 831	294 040	316 808
Gross value added at basic prices	158 786	176 445	195 012	215 830	238 910	271 488	298 511	360 810	405 823	455 484
Other taxes on production	3 497	3 722	4 088	4 036	4 392	4 492	5 078	5 518	6 230	7 018
Other subsidies	0	0	0	0	0	0	0	0	0	0
Value added at factor cost	155 289	172 723	190 924	211 794	234 519	266 996	293 433	355 292	399 593	448 466
Compensation of employees	74 129	82 791	90 849	100 805	108 686	120 774	128 668	143 468	161 582	174 734
Gross operating surplus/mixed income	81 160	89 932	100 075	110 989	125 833	146 222	164 765	211 824	238 011	273 733

**Table 12 - Annual production and generation of income accounts by industry at current prices (R million) concluded**

Industry	2003	2004	2005	2006	2007	2008	2009	2010	2011	2012
<b>Transport, storage and communication</b>										
Output at basic prices	264 903	284 526	308 285	334 281	360 737	401 375	429 697	460 207	500 857	529 609
Intermediate consumption	152 266	159 740	168 813	180 506	196 270	211 593	230 421	237 362	255 266	272 235
Gross value added at basic prices	112 637	124 786	139 472	153 775	164 467	189 782	199 276	222 845	245 590	257 374
Other taxes on production	2 144	2 285	2 512	2 478	2 698	2 760	3 120	3 501	3 926	4 383
Other subsidies	-377	-271	-412	-760	-683	-968	-1 204	-1 134	-877	-1 442
Value added at factor cost	110 870	122 772	137 372	152 057	162 452	187 990	197 361	220 477	242 541	254 433
Compensation of employees	41 779	46 041	50 515	54 060	57 979	61 386	64 378	73 045	81 240	87 534
Gross operating surplus/mixed income	69 091	76 731	86 857	97 997	104 474	126 604	132 983	147 432	161 301	166 899
<b>Finance, real estate and business services</b>										
Output at basic prices	426 776	480 791	551 633	635 197	742 826	835 984	865 848	943 223	1 020 008	1 107 814
Intermediate consumption	195 600	219 506	256 130	295 886	337 305	397 396	401 017	435 805	473 024	509 921
Gross value added at basic prices	231 176	261 285	295 503	339 311	405 520	438 587	464 831	507 418	546 984	597 893
Other taxes on production	12 208	12 997	14 278	14 098	15 341	15 692	17 737	19 274	21 762	24 514
Other subsidies	-86	-50	-114	-105	-114	-170	-159	-147	-152	-192
Value added at factor cost	219 054	248 338	281 339	325 318	390 293	423 066	447 253	488 291	525 374	573 571
Compensation of employees	83 620	96 945	112 934	128 669	149 792	167 630	171 329	193 224	214 206	234 282
Gross operating surplus/mixed income	135 434	151 393	168 405	196 649	240 501	255 435	275 923	295 067	311 167	339 288
<b>General government services</b>										
Output at basic prices	275 592	299 087	332 842	375 774	436 108	509 458	618 365	704 094	772 208	845 374
Intermediate consumption	101 486	108 524	124 281	145 658	176 306	216 168	273 966	312 178	342 537	378 577
Gross value added at basic prices	174 106	190 563	208 561	230 116	259 802	293 290	344 399	391 916	429 671	466 797
Other taxes on production	2 657	2 829	3 108	3 068	3 339	3 416	3 861	4 195	4 737	5 336
Other subsidies	0	0	0	0	0	0	0	0	0	0
Value added at factor cost	171 449	187 734	205 453	227 048	256 463	289 874	340 538	387 721	424 934	461 461
Compensation of employees	151 039	166 287	181 765	199 990	225 220	252 574	300 326	345 096	378 982	411 884
Gross operating surplus	20 410	21 447	23 688	27 058	31 243	37 300	40 212	42 625	45 952	49 577
<b>Personal services</b>										
Output at basic prices	143 814	156 014	172 091	195 962	220 753	235 724	261 468	285 179	305 755	328 770
Intermediate consumption	71 001	75 363	83 636	97 934	111 308	116 939	127 294	136 340	147 886	158 264
Gross value added at basic prices	72 814	80 651	88 455	98 028	109 445	118 785	134 174	148 839	157 870	170 506
Other taxes on production	1 967	2 092	2 299	2 271	2 471	2 528	2 857	3 105	3 506	3 949
Other subsidies	-545	-384	-582	-1 055	-984	-1 394	-1 734	-1 633	-1 263	-2 076
Value added at factor cost	71 392	78 943	86 738	96 812	107 957	117 651	133 052	147 367	155 627	168 633
Compensation of employees	48 454	53 280	57 446	63 687	71 411	78 117	84 522	91 381	99 443	106 917
Gross operating surplus	22 938	25 663	29 292	33 125	36 546	39 534	48 530	55 986	56 184	61 716
<b>Sum of all industries</b>										
Output at basic prices	2 737 113	2 960 265	3 248 150	3 649 000	4 154 400	4 750 025	5 020 181	5 456 548	5 908 950	6 344 313
Intermediate consumption	1 581 963	1 689 665	1 847 084	2 076 681	2 362 325	2 722 274	2 840 186	3 033 189	3 273 918	3 524 052
Gross value added at basic prices	1 155 150	1 270 600	1 401 066	1 572 319	1 792 075	2 027 751	2 179 995	2 423 358	2 635 032	2 820 261
Other taxes on production	28 150	29 966	32 927	32 498	35 373	36 184	40 898	44 553	50 279	56 598
Other subsidies	-4 111	-2 897	-4 436	-7 924	-7 388	-10 474	-12 978	-12 215	-9 485	-15 538
Value added at factor cost	1 131 111	1 243 531	1 372 575	1 547 745	1 764 090	2 002 042	2 152 074	2 391 020	2 594 238	2 779 201
Compensation of employees	578 988	636 954	699 018	777 553	882 379	991 872	1 083 314	1 213 010	1 334 595	1 451 602
Gross operating surplus/mixed income	552 123	606 577	673 557	770 192	881 711	1 010 169	1 068 760	1 178 009	1 259 643	1 327 599

**Table 13 - Annual production accounts by industry at constant 2005 prices (R million)**

Industry	2003	2004	2005	2006	2007	2008	2009	2010	2011	2012
<b>Agriculture, forestry and fishing</b>										
Output at basic prices	83 274	84 124	84 524	86 302	92 426	102 930	102 463	104 064	104 703	107 285
Intermediate consumption	47 204	47 744	47 122	50 943	56 125	60 787	61 009	62 450	63 116	64 852
Gross value added at basic prices	36 070	36 380	37 402	35 359	36 301	42 143	41 454	41 614	41 587	42 433
<b>Mining and quarrying</b>										
Output at basic prices	181 171	185 882	189 495	188 886	189 950	179 677	168 806	178 957	178 998	173 075
Intermediate consumption	77 816	80 967	83 503	83 522	84 614	80 281	74 749	79 574	79 311	76 993
Gross value added at basic prices	103 355	104 915	105 992	105 364	105 336	99 396	94 057	99 383	99 687	96 082
<b>Manufacturing</b>										
Output at basic prices	947 802	990 841	1 029 868	1 074 423	1 117 438	1 177 104	1 101 729	1 132 437	1 135 489	1 143 021
Intermediate consumption	715 221	746 876	770 767	798 641	827 192	879 216	834 006	849 928	843 704	845 212
Gross value added at basic prices	232 581	243 965	259 101	275 782	290 246	297 889	267 723	282 509	291 785	297 808
<b>Electricity, gas and water</b>										
Output at basic prices	65 047	67 083	67 253	71 189	72 830	72 675	73 423	75 661	76 412	77 854
Intermediate consumption	35 703	35 748	34 243	37 050	37 536	38 479	39 711	41 122	41 362	43 378
Gross value added at basic prices	29 344	31 335	33 010	34 139	35 294	34 196	33 712	34 538	35 049	34 476
<b>Construction</b>										
Output at basic prices	127 295	132 802	144 967	163 818	188 708	203 799	221 517	228 839	235 941	238 185
Intermediate consumption	95 720	98 351	106 409	121 236	139 737	150 653	164 238	171 133	178 072	178 979
Gross value added at basic prices	31 575	34 451	38 558	42 582	48 971	53 145	57 279	57 707	57 869	59 206
<b>Wholesale, retail and motor trade; catering and accommodation</b>										
Output at basic prices	326 557	343 563	367 192	396 757	418 089	411 466	411 626	432 543	447 316	461 359
Intermediate consumption	153 712	161 388	172 180	190 121	200 482	191 717	194 552	207 205	212 022	217 081
Gross value added at basic prices	172 845	182 175	195 012	206 636	217 607	219 749	217 074	225 338	235 295	244 278
<b>Transport, storage and communication</b>										
Output at basic prices	287 636	297 159	308 284	324 507	337 805	338 398	347 402	358 437	362 177	369 677
Intermediate consumption	161 349	164 700	168 813	177 900	181 516	175 876	183 402	191 124	189 646	192 977
Gross value added at basic prices	126 287	132 459	139 472	146 607	156 289	162 522	163 999	167 313	172 530	176 699
<b>Finance, real estate and business services</b>										
Output at basic prices	463 548	504 911	551 633	606 082	648 075	706 742	708 509	733 541	763 389	782 115
Intermediate consumption	202 425	225 367	256 130	282 080	298 574	331 502	329 522	346 352	357 910	361 642
Gross value added at basic prices	261 123	279 544	295 504	324 002	349 501	375 240	378 987	387 189	405 479	420 473
<b>General government services</b>										
Output at basic prices	306 431	314 232	332 842	349 508	370 733	395 788	445 394	475 783	494 631	512 597
Intermediate consumption	110 238	114 285	124 281	134 561	147 449	162 372	202 852	225 769	234 137	244 883
Gross value added at basic prices	196 193	199 947	208 561	214 947	223 284	233 416	242 542	250 014	260 494	267 714
<b>Personal services</b>										
Output at basic prices	157 528	162 616	172 091	188 538	200 818	201 581	201 177	209 163	209 788	213 594
Intermediate consumption	73 772	77 397	83 637	95 465	102 571	99 476	99 944	107 492	105 762	107 413
Gross value added at basic prices	83 756	85 219	88 455	93 073	98 247	102 106	101 233	101 671	104 026	106 181
<b>Sum of all industries</b>										
Output at basic prices	2 946 289	3 083 213	3 248 151	3 450 011	3 636 872	3 790 161	3 782 045	3 929 425	4 008 843	4 078 763
Intermediate consumption	1 673 160	1 752 823	1 847 084	1 971 519	2 075 796	2 170 360	2 183 986	2 282 149	2 305 042	2 333 410
Gross value added at basic prices	1 273 129	1 330 390	1 401 066	1 478 492	1 561 076	1 619 802	1 598 060	1 647 275	1 703 801	1 745 353

**Table 14 - Annual volume index numbers by industry (2005=100)**

Industry	2003	2004	2005	2006	2007	2008	2009	2010	2011	2012
Agriculture, forestry and fishing	96,4	97,3	100,0	94,5	97,1	112,7	110,8	111,3	111,2	113,5
Mining and quarrying	97,5	99,0	100,0	99,4	99,4	93,8	88,7	93,8	94,1	90,7
Manufacturing	89,8	94,2	100,0	106,4	112,0	115,0	103,3	109,0	112,6	114,9
Electricity, gas and water	88,9	94,9	100,0	103,4	106,9	103,6	102,1	104,6	106,2	104,4
Construction	81,9	89,3	100,0	110,4	127,0	137,8	148,6	149,7	150,1	153,6
Wholesale , retail and motor trade; catering and accommodation	88,6	93,4	100,0	106,0	111,6	112,7	111,3	115,6	120,7	125,3
Transport, storage and communication	90,5	95,0	100,0	105,1	112,1	116,5	117,6	120,0	123,7	126,7
Finance, real estate and business services	88,4	94,6	100,0	109,6	118,3	127,0	128,3	131,0	137,2	142,3
General government services	94,1	95,9	100,0	103,1	107,1	111,9	116,3	119,9	124,9	128,4
Personal services	94,7	96,3	100,0	105,2	111,1	115,4	114,4	114,9	117,6	120,0
<b>Total values added at basic prices</b>	<b>90,9</b>	<b>95,0</b>	<b>100,0</b>	<b>105,5</b>	<b>111,4</b>	<b>115,6</b>	<b>114,1</b>	<b>117,6</b>	<b>121,6</b>	<b>124,6</b>
Taxes on products	90,7	95,2	100,0	106,2	111,8	114,6	111,2	115,2	120,9	124,2
Subsidies on products	90,9	95,0	100,0	105,5	111,4	115,6	114,1	117,6	121,6	124,6
<b>GDP at market prices</b>	<b>90,8</b>	<b>95,0</b>	<b>100,0</b>	<b>105,6</b>	<b>111,5</b>	<b>115,5</b>	<b>113,7</b>	<b>117,3</b>	<b>121,5</b>	<b>124,5</b>

**Table 15 - Annual value added and gross domestic product deflators (2005=100)**

Industry	2003	2004	2005	2006	2007	2008	2009	2010	2011	2012
Agriculture, forestry and fishing	109,9	108,5	100,0	128,3	148,3	143,7	153,6	150,8	156,8	167,4
Mining and quarrying	83,0	86,9	100,0	125,6	149,0	197,7	208,9	229,6	275,4	281,1
Manufacturing	96,3	100,0	100,0	99,5	104,9	114,3	123,9	122,3	115,7	114,5
Electricity, gas and water	100,7	96,3	100,0	108,2	118,4	134,2	179,2	182,6	208,3	245,0
Construction	84,7	93,0	100,0	108,4	116,2	135,9	151,1	159,3	170,6	178,4
Wholesale , retail and motor trade; catering and accommodation	91,9	96,9	100,0	104,4	109,8	123,5	137,5	160,1	172,5	186,5
Transport, storage and communication	89,2	94,2	100,0	104,9	105,2	116,8	121,5	133,2	142,3	145,7
Finance, real estate and business services	88,5	93,5	100,0	104,7	116,0	116,9	122,7	131,1	134,9	142,2
General government services	88,7	95,3	100,0	107,1	116,4	125,7	142,0	156,8	164,9	174,4
Personal services	86,9	94,6	100,0	105,3	111,4	116,3	132,5	146,4	151,8	160,6
<b>Total values added at basic prices</b>	<b>90,7</b>	<b>95,5</b>	<b>100,0</b>	<b>106,3</b>	<b>114,8</b>	<b>125,2</b>	<b>136,4</b>	<b>147,1</b>	<b>154,7</b>	<b>161,6</b>
Taxes on products	76,0	88,1	100,0	109,1	117,1	120,4	121,4	130,5	146,1	155,3
Subsidies on products	71,7	51,7	100,0	141,0	93,5	210,0	140,2	207,4	182,8	285,3
<b>GDP deflator</b>	<b>89,2</b>	<b>94,8</b>	<b>100,0</b>	<b>106,5</b>	<b>115,1</b>	<b>124,4</b>	<b>134,8</b>	<b>145,1</b>	<b>153,6</b>	<b>160,4</b>



**Table 16 - Gross domestic product by region: Summary**

**a. Current prices - Rand million**

Province	2003	2004	2005	2006	2007	2008	2009	2010	2011	2012
Western Cape	183 462	209 603	229 150	256 935	293 246	322 092	339 990	379 691	413 474	438 700
Eastern Cape	101 806	112 593	123 551	135 503	151 789	169 921	183 746	204 078	217 055	234 536
Northern Cape	28 167	30 776	34 049	39 455	45 497	51 627	55 203	60 828	65 751	70 203
Free State	69 425	76 219	81 362	95 334	108 553	121 120	130 170	144 311	153 897	162 601
KwaZulu-Natal	209 133	232 572	254 939	285 663	324 965	361 751	385 655	424 618	461 056	496 431
North West	80 083	87 933	100 628	114 069	130 073	148 177	156 607	175 016	193 833	201 736
Gauteng	428 624	477 927	539 121	598 114	685 945	763 387	818 933	908 753	1 006 260	1 089 535
Mpumalanga	87 432	94 980	104 168	122 069	138 844	159 810	169 167	187 345	209 927	222 149
Limpopo	84 404	92 670	104 113	120 280	137 274	158 600	168 605	189 130	211 478	223 090
<b>GDP at market prices</b>	<b>1 272 537</b>	<b>1 415 273</b>	<b>1 571 081</b>	<b>1 767 422</b>	<b>2 016 184</b>	<b>2 256 484</b>	<b>2 408 076</b>	<b>2 673 769</b>	<b>2 932 729</b>	<b>3 138 980</b>

**b. Current prices - percentage contributions**

Province	2003	2004	2005	2006	2007	2008	2009	2010	2011	2012
Western Cape	14,4	14,8	14,6	14,5	14,5	14,3	14,1	14,2	14,1	14,0
Eastern Cape	8,0	8,0	7,9	7,7	7,5	7,5	7,6	7,6	7,4	7,5
Northern Cape	2,2	2,2	2,2	2,2	2,3	2,3	2,3	2,3	2,2	2,2
Free State	5,5	5,4	5,2	5,4	5,4	5,4	5,4	5,4	5,2	5,2
KwaZulu-Natal	16,4	16,4	16,2	16,2	16,1	16,0	16,0	15,9	15,7	15,8
North West	6,3	6,2	6,4	6,5	6,5	6,6	6,5	6,5	6,6	6,4
Gauteng	33,7	33,8	34,3	33,8	34,0	33,8	34,0	34,0	34,3	34,7
Mpumalanga	6,9	6,7	6,6	6,9	6,9	7,1	7,0	7,0	7,2	7,1
Limpopo	6,6	6,5	6,6	6,8	6,8	7,0	7,0	7,1	7,2	7,1
<b>GDP at market prices</b>	<b>100,0</b>	<b>100,0</b>	<b>100,0</b>	<b>100,0</b>	<b>100,0</b>	<b>100,0</b>	<b>100,0</b>	<b>100,0</b>	<b>100,0</b>	<b>100,0</b>

**c. Constant 2005 prices - Rand million**

Province	2003	2004	2005	2006	2007	2008	2009	2010	2011	2012
Western Cape	204 656	216 301	229 150	242 731	257 883	269 059	265 572	272 997	283 718	292 847
Eastern Cape	113 747	117 810	123 551	130 238	137 267	142 395	140 804	144 204	149 339	153 255
Northern Cape	32 079	32 881	34 049	35 452	36 844	37 487	36 276	37 203	38 020	38 404
Free State	75 131	78 111	81 362	85 010	88 856	91 591	89 653	91 856	94 118	96 222
KwaZulu-Natal	230 682	241 055	254 939	269 045	284 849	296 351	291 717	302 618	313 388	322 182
North West	92 475	95 707	100 628	105 164	109 549	111 988	109 067	112 222	115 285	114 574
Gauteng	485 995	511 026	539 121	573 451	607 936	632 170	623 890	645 893	674 075	693 530
Mpumalanga	95 730	99 607	104 168	108 935	114 014	116 631	114 618	117 779	120 610	123 247
Limpopo	96 828	99 832	104 113	109 094	113 967	116 923	115 301	118 237	120 791	122 182
<b>GDP at market prices</b>	<b>1 427 322</b>	<b>1 492 330</b>	<b>1 571 081</b>	<b>1 659 122</b>	<b>1 751 165</b>	<b>1 814 594</b>	<b>1 786 899</b>	<b>1 843 008</b>	<b>1 909 343</b>	<b>1 956 444</b>

**d. Constant 2005 prices - percentage changes**

Province	2003	2004	2005	2006	2007	2008	2009	2010	2011	2012
Western Cape	3,4	5,7	5,9	5,9	6,2	4,3	-1,3	2,8	3,9	3,2
Eastern Cape	2,6	3,6	4,9	5,4	5,4	3,7	-1,1	2,4	3,6	2,6
Northern Cape	3,6	2,5	3,6	4,1	3,9	1,7	-3,2	2,6	2,2	1,0
Free State	2,2	4,0	4,2	4,5	4,5	3,1	-2,1	2,5	2,5	2,2
KwaZulu-Natal	2,7	4,5	5,8	5,5	5,9	4,0	-1,6	3,7	3,6	2,8
North West	4,1	3,5	5,1	4,5	4,2	2,2	-2,6	2,9	2,7	-0,6
Gauteng	2,9	5,2	5,5	6,4	6,0	4,0	-1,3	3,5	4,4	2,9
Mpumalanga	2,8	4,1	4,6	4,6	4,7	2,3	-1,7	2,8	2,4	2,2
Limpopo	2,4	3,1	4,3	4,8	4,5	2,6	-1,4	2,5	2,2	1,2
<b>GDPR at market prices</b>	<b>2,9</b>	<b>4,6</b>	<b>5,3</b>	<b>5,6</b>	<b>5,5</b>	<b>3,6</b>	<b>-1,5</b>	<b>3,1</b>	<b>3,6</b>	<b>2,5</b>





















**Table 26 - Gross domestic product by region: Agriculture, forestry and fishing**

**a. Current prices - Rand million**

Province	2003	2004	2005	2006	2007	2008	2009	2010	2011	2012
Western Cape	8 479	9 075	8 876	10 436	12 845	13 326	13 960	13 912	14 690	16 019
Eastern Cape	2 270	2 252	2 034	2 488	2 914	3 077	3 248	2 994	3 400	3 845
Northern Cape	2 396	2 525	2 228	2 736	3 402	3 898	4 075	4 077	3 943	4 353
Free State	4 416	3 666	2 967	4 271	4 944	6 706	6 998	6 376	6 623	7 435
KwaZulu-Natal	10 128	10 409	10 091	11 603	13 823	15 882	17 046	17 018	17 490	18 765
North West	2 213	2 336	2 797	3 132	3 541	3 843	3 865	3 884	3 915	4 431
Gauteng	2 679	2 533	2 292	2 870	3 343	3 572	3 710	3 688	3 995	4 178
Mpumalanga	3 913	3 703	3 404	4 398	5 000	5 541	5 807	5 624	5 811	6 056
Limpopo	3 151	2 990	2 713	3 420	4 022	4 702	4 945	5 195	5 336	5 936
<b>Value added at basic prices</b>	<b>39 644</b>	<b>39 490</b>	<b>37 402</b>	<b>45 351</b>	<b>53 833</b>	<b>60 547</b>	<b>63 655</b>	<b>62 768</b>	<b>65 204</b>	<b>71 018</b>

**b. Current prices - percentage contributions**

Province	2003	2004	2005	2006	2007	2008	2009	2010	2011	2012
Western Cape	21,4	23,0	23,7	23,0	23,9	22,0	21,9	22,2	22,5	22,6
Eastern Cape	5,7	5,7	5,4	5,5	5,4	5,1	5,1	4,8	5,2	5,4
Northern Cape	6,0	6,4	6,0	6,0	6,3	6,4	6,4	6,5	6,0	6,1
Free State	11,1	9,3	7,9	9,4	9,2	11,1	11,0	10,2	10,2	10,5
KwaZulu-Natal	25,5	26,4	27,0	25,6	25,7	26,2	26,8	27,1	26,8	26,4
North West	5,6	5,9	7,5	6,9	6,6	6,3	6,1	6,2	6,0	6,2
Gauteng	6,8	6,4	6,1	6,3	6,2	5,9	5,8	5,9	6,1	5,9
Mpumalanga	9,9	9,4	9,1	9,7	9,3	9,2	9,1	9,0	8,9	8,5
Limpopo	7,9	7,6	7,3	7,5	7,5	7,8	7,8	8,3	8,2	8,4
<b>Value added at basic prices</b>	<b>100,0</b>	<b>100,0</b>	<b>100,0</b>	<b>100,0</b>	<b>100,0</b>	<b>100,0</b>	<b>100,0</b>	<b>100,0</b>	<b>100,0</b>	<b>100,0</b>

**c. Constant 2005 prices - Rand million**

Province	2003	2004	2005	2006	2007	2008	2009	2010	2011	2012
Western Cape	8 179	8 382	8 876	8 370	8 503	10 004	9 879	9 696	9 730	9 916
Eastern Cape	2 376	2 392	2 034	2 319	2 382	2 730	2 703	2 740	2 730	2 785
Northern Cape	1 810	1 765	2 228	1 907	1 965	2 174	2 117	2 118	2 081	2 138
Free State	2 807	2 821	2 967	2 676	2 716	3 310	3 194	3 227	3 248	3 353
KwaZulu-Natal	10 685	10 717	10 091	10 145	10 559	12 095	11 747	12 023	12 149	12 455
North West	2 460	2 505	2 797	2 408	2 463	2 886	2 815	2 907	2 830	2 842
Gauteng	2 039	2 035	2 292	1 985	2 027	2 215	2 188	2 176	2 164	2 174
Mpumalanga	3 517	3 563	3 404	3 023	3 069	3 647	3 702	3 660	3 607	3 692
Limpopo	2 197	2 199	2 713	2 527	2 617	3 082	3 110	3 066	3 049	3 079
<b>Value added at basic prices</b>	<b>36 070</b>	<b>36 380</b>	<b>37 402</b>	<b>35 359</b>	<b>36 301</b>	<b>42 143</b>	<b>41 454</b>	<b>41 614</b>	<b>41 587</b>	<b>42 433</b>

**d. Constant 2005 prices - percentage changes**

Province	2003	2004	2005	2006	2007	2008	2009	2010	2011	2012
Western Cape	-0,8	2,5	5,9	-5,7	1,6	17,7	-1,2	-1,8	0,4	1,9
Eastern Cape	-1,5	0,7	-15,0	14,0	2,7	14,6	-1,0	1,4	-0,4	2,0
Northern Cape	5,3	-2,5	26,3	-14,4	3,0	10,6	-2,6	0,1	-1,8	2,8
Free State	-7,3	0,5	5,2	-9,8	1,5	21,9	-3,5	1,1	0,6	3,2
KwaZulu-Natal	5,2	0,3	-5,8	0,5	4,1	14,5	-2,9	2,4	1,0	2,5
North West	0,4	1,8	11,6	-13,9	2,3	17,2	-2,5	3,3	-2,7	0,4
Gauteng	-2,8	-0,2	12,6	-13,4	2,1	9,3	-1,2	-0,6	-0,6	0,4
Mpumalanga	-1,3	1,3	-4,5	-11,2	1,5	18,8	1,5	-1,1	-1,5	2,4
Limpopo	2,0	0,1	23,4	-6,9	3,6	17,8	0,9	-1,4	-0,6	1,0
<b>Value added at basic prices</b>	<b>0,7</b>	<b>0,9</b>	<b>2,8</b>	<b>-5,5</b>	<b>2,7</b>	<b>16,1</b>	<b>-1,6</b>	<b>0,4</b>	<b>-0,1</b>	<b>2,0</b>

**Table 27 - Gross domestic product by region: Mining and quarrying**

**a. Current prices - Rand million**

Province	2003	2004	2005	2006	2007	2008	2009	2010	2011	2012
Western Cape	443	428	469	592	678	891	879	941	1 194	810
Eastern Cape	184	230	159	330	372	500	676	472	474	540
Northern Cape	6 988	7 345	8 114	9 750	11 527	14 253	14 239	16 293	18 537	18 636
Free State	7 719	8 305	8 678	11 377	13 574	17 683	17 096	19 645	21 644	21 182
KwaZulu/Natal	3 094	3 178	3 706	4 704	5 540	7 238	6 837	8 032	9 380	9 183
North West	20 242	21 800	26 478	31 959	37 886	46 806	46 929	54 787	68 041	66 791
Gauteng	12 119	12 686	13 683	18 060	21 634	26 174	26 536	30 979	35 062	34 921
Mpumalanga	16 100	17 100	20 587	25 418	30 122	38 115	38 426	44 870	54 827	54 019
Limpopo	18 882	20 126	24 118	30 113	35 637	44 866	44 903	52 211	65 371	64 013
<b>Value added at basic prices</b>	<b>85 770</b>	<b>91 199</b>	<b>105 992</b>	<b>132 301</b>	<b>156 970</b>	<b>196 526</b>	<b>196 521</b>	<b>228 230</b>	<b>274 530</b>	<b>270 096</b>

**b. Current prices - percentage contributions**

Province	2003	2004	2005	2006	2007	2008	2009	2010	2011	2012
Western Cape	0,5	0,5	0,4	0,4	0,4	0,5	0,4	0,4	0,4	0,3
Eastern Cape	0,2	0,3	0,1	0,2	0,2	0,3	0,3	0,2	0,2	0,2
Northern Cape	8,1	8,1	7,7	7,4	7,3	7,3	7,2	7,1	6,8	6,9
Free State	9,0	9,1	8,2	8,6	8,6	9,0	8,7	8,6	7,9	7,8
KwaZulu-Natal	3,6	3,5	3,5	3,6	3,5	3,7	3,5	3,5	3,4	3,4
North West	23,6	23,9	25,0	24,2	24,1	23,8	23,9	24,0	24,8	24,7
Gauteng	14,1	13,9	12,9	13,7	13,8	13,3	13,5	13,6	12,8	12,9
Mpumalanga	18,8	18,8	19,4	19,2	19,2	19,4	19,6	19,7	20,0	20,0
Limpopo	22,0	22,1	22,8	22,8	22,7	22,8	22,8	22,9	23,8	23,7
<b>Value added at basic prices</b>	<b>100,0</b>	<b>100,0</b>	<b>100,0</b>	<b>100,0</b>	<b>100,0</b>	<b>100,0</b>	<b>100,0</b>	<b>100,0</b>	<b>100,0</b>	<b>100,0</b>

**c. Constant 2005 prices - Rand million**

Province	2003	2004	2005	2006	2007	2008	2009	2010	2011	2012
Western Cape	439	445	469	443	446	415	382	395	390	385
Eastern Cape	167	169	159	161	159	146	130	138	139	142
Northern Cape	8 927	8 980	8 114	8 647	8 541	8 029	7 278	7 666	7 485	7 455
Free State	8 079	8 216	8 678	8 157	8 005	7 382	7 006	7 346	7 292	7 151
KwaZulu-Natal	3 876	3 953	3 706	3 582	3 671	3 431	3 212	3 515	3 466	3 533
North West	25 882	26 349	26 478	27 093	26 772	25 470	24 090	25 695	26 163	23 424
Gauteng	12 619	12 539	13 683	12 505	12 553	11 520	10 889	11 585	11 318	10 596
Mpumalanga	19 427	19 940	20 587	20 628	20 773	19 728	18 895	19 709	19 875	20 394
Limpopo	23 939	24 323	24 118	24 149	24 416	23 275	22 175	23 335	23 560	23 003
<b>Value added at basic prices</b>	<b>103 355</b>	<b>104 915</b>	<b>105 992</b>	<b>105 364</b>	<b>105 336</b>	<b>99 396</b>	<b>94 057</b>	<b>99 383</b>	<b>99 687</b>	<b>96 082</b>

**d. Constant 2005 prices - percentage changes**

Province	2003	2004	2005	2006	2007	2008	2009	2010	2011	2012
Western Cape	1,2	1,3	5,2	-5,6	0,8	-7,0	-7,9	3,2	-1,0	-1,5
Eastern Cape	4,6	1,2	-6,3	1,4	-1,2	-8,5	-10,6	6,2	0,5	2,1
Northern Cape	3,8	0,6	-9,6	6,6	-1,2	-6,0	-9,4	5,3	-2,4	-0,4
Free State	4,5	1,7	5,6	-6,0	-1,9	-7,8	-5,1	4,9	-0,7	-1,9
KwaZulu-Natal	5,9	2,0	-6,3	-3,3	2,5	-6,5	-6,4	9,4	-1,4	1,9
North West	8,7	1,8	0,5	2,3	-1,2	-4,9	-5,4	6,7	1,8	-10,5
Gauteng	-6,1	-0,6	9,1	-8,6	0,4	-8,2	-5,5	6,4	-2,3	-6,4
Mpumalanga	3,2	2,6	3,2	0,2	0,7	-5,0	-4,2	4,3	0,8	2,6
Limpopo	2,8	1,6	-0,8	0,1	1,1	-4,7	-4,7	5,2	1,0	-2,4
<b>Value added at basic prices</b>	<b>3,4</b>	<b>1,5</b>	<b>1,0</b>	<b>-0,6</b>	<b>0,0</b>	<b>-5,6</b>	<b>-5,4</b>	<b>5,7</b>	<b>0,3</b>	<b>-3,6</b>

**Table 28 - Gross domestic product by region: Manufacturing**

**a. Current prices - Rand million**

Province	2003	2004	2005	2006	2007	2008	2009	2010	2011	2012
Western Cape	33 207	36 176	38 733	39 984	44 782	50 334	48 176	50 745	49 416	50 227
Eastern Cape	17 780	19 154	20 111	21 803	23 745	27 130	25 891	27 358	26 391	26 863
Northern Cape	980	1 021	1 107	1 156	1 020	1 555	1 283	1 608	1 178	771
Free State	9 063	9 644	9 898	11 172	12 081	13 152	13 494	13 961	12 871	12 859
KwaZulu-Natal	47 700	51 876	55 027	58 496	65 401	72 240	71 081	73 828	72 932	74 108
North West	5 736	6 686	6 677	7 165	8 070	7 693	8 569	8 951	8 204	7 411
Gauteng	89 759	98 065	105 281	110 496	123 338	138 618	135 073	139 599	137 216	139 087
Mpumalanga	16 629	17 984	18 719	20 512	22 244	24 632	23 422	24 079	24 231	24 973
Limpopo	3 062	3 360	3 547	3 718	3 757	5 270	4 713	5 423	5 201	4 685
<b>Value added at basic prices</b>	<b>223 917</b>	<b>243 967</b>	<b>259 101</b>	<b>274 502</b>	<b>304 438</b>	<b>340 623</b>	<b>331 703</b>	<b>345 554</b>	<b>337 639</b>	<b>340 983</b>

**b. Current prices - percentage contributions**

Province	2003	2004	2005	2006	2007	2008	2009	2010	2011	2012
Western Cape	14,8	14,8	14,9	14,6	14,7	14,8	14,5	14,7	14,6	14,7
Eastern Cape	7,9	7,9	7,8	7,9	7,8	8,0	7,8	7,9	7,8	7,9
Northern Cape	0,4	0,4	0,4	0,4	0,3	0,5	0,4	0,5	0,3	0,2
Free State	4,0	4,0	3,8	4,1	4,0	3,9	4,1	4,0	3,8	3,8
KwaZulu-Natal	21,3	21,3	21,2	21,3	21,5	21,2	21,4	21,4	21,6	21,7
North West	2,6	2,7	2,6	2,6	2,7	2,3	2,6	2,6	2,4	2,2
Gauteng	40,1	40,2	40,6	40,3	40,5	40,7	40,7	40,4	40,6	40,8
Mpumalanga	7,4	7,4	7,2	7,5	7,3	7,2	7,1	7,0	7,2	7,3
Limpopo	1,4	1,4	1,4	1,4	1,2	1,5	1,4	1,6	1,5	1,4
<b>Value added at basic prices</b>	<b>100,0</b>	<b>100,0</b>	<b>100,0</b>	<b>100,0</b>	<b>100,0</b>	<b>100,0</b>	<b>100,0</b>	<b>100,0</b>	<b>100,0</b>	<b>100,0</b>

**c. Constant 2005 prices - Rand million**

Province	2003	2004	2005	2006	2007	2008	2009	2010	2011	2012
Western Cape	34 717	36 767	38 733	41 157	43 300	44 195	40 375	42 452	43 781	44 556
Eastern Cape	18 504	19 226	20 111	21 338	22 576	22 984	21 407	22 293	23 132	23 674
Northern Cape	942	957	1 107	1 179	1 242	1 286	1 215	1 302	1 317	1 324
Free State	9 163	9 530	9 898	10 583	11 044	11 276	10 426	10 972	11 161	11 246
KwaZulu-Natal	49 503	51 830	55 027	58 348	61 441	63 013	56 741	60 193	62 165	63 486
North West	5 878	6 213	6 677	7 080	7 493	7 698	7 215	7 582	7 715	7 816
Gauteng	93 883	98 485	105 281	112 317	118 005	121 444	106 330	112 199	116 502	119 429
Mpumalanga	16 752	17 556	18 719	19 987	21 113	21 828	20 302	21 588	22 033	22 257
Limpopo	3 239	3 401	3 547	3 792	4 031	4 165	3 712	3 929	3 978	4 021
<b>Value added at basic prices</b>	<b>232 581</b>	<b>243 965</b>	<b>259 101</b>	<b>275 782</b>	<b>290 246</b>	<b>297 889</b>	<b>267 723</b>	<b>282 509</b>	<b>291 785</b>	<b>297 808</b>

**d. Constant 2005 prices - percentage changes**

Province	2003	2004	2005	2006	2007	2008	2009	2010	2011	2012
Western Cape	-2,3	5,9	5,3	6,3	5,2	2,1	-8,6	5,1	3,1	1,8
Eastern Cape	-2,3	3,9	4,6	6,1	5,8	1,8	-6,9	4,1	3,8	2,3
Northern Cape	-7,9	1,6	15,7	6,5	5,3	3,6	-5,5	7,1	1,2	0,5
Free State	-0,9	4,0	3,9	6,9	4,3	2,1	-7,5	5,2	1,7	0,8
KwaZulu-Natal	-0,9	4,7	6,2	6,0	5,3	2,6	-10,0	6,1	3,3	2,1
North West	-3,7	5,7	7,5	6,0	5,8	2,7	-6,3	5,1	1,8	1,3
Gauteng	-1,3	4,9	6,9	6,7	5,1	2,9	-12,4	5,5	3,8	2,5
Mpumalanga	-0,8	4,8	6,6	6,8	5,6	3,4	-7,0	6,3	2,1	1,0
Limpopo	-1,5	5,0	4,3	6,9	6,3	3,3	-10,9	5,8	1,3	1,1
<b>Value added at basic prices</b>	<b>-1,5</b>	<b>4,9</b>	<b>6,2</b>	<b>6,4</b>	<b>5,2</b>	<b>2,6</b>	<b>-10,1</b>	<b>5,5</b>	<b>3,3</b>	<b>2,1</b>

**Table 29 - Gross domestic product by region: Electricity, gas and water**

**a. Current prices - Rand million**

Province	2003	2004	2005	2006	2007	2008	2009	2010	2011	2012
Western Cape	3 088	3 177	3 477	3 868	4 354	5 080	6 775	6 954	8 131	9 210
Eastern Cape	1 179	1 288	1 317	1 584	1 838	1 898	2 609	2 474	2 750	3 204
Northern Cape	565	670	661	820	892	1 128	1 638	1 689	1 758	2 097
Free State	2 035	2 202	2 265	2 574	2 953	3 081	4 114	4 145	4 620	5 072
KwaZulu-Natal	5 031	5 263	5 691	6 310	7 127	7 339	9 647	9 755	11 698	13 193
North West	910	894	971	1 039	1 134	1 356	1 927	2 242	2 703	2 891
Gauteng	9 945	9 805	11 194	12 185	13 952	15 289	19 683	21 111	24 142	28 926
Mpumalanga	4 322	4 434	4 666	5 506	6 043	6 938	9 097	9 427	11 185	13 028
Limpopo	2 479	2 443	2 767	3 061	3 490	3 793	4 911	5 283	6 024	6 853
<b>Value added at basic prices</b>	<b>29 553</b>	<b>30 176</b>	<b>33 010</b>	<b>36 946</b>	<b>41 783</b>	<b>45 902</b>	<b>60 402</b>	<b>63 080</b>	<b>73 010</b>	<b>84 475</b>

**b. Current prices - percentage contributions**

Province	2003	2004	2005	2006	2007	2008	2009	2010	2011	2012
Western Cape	10,4	10,5	10,5	10,5	10,4	11,1	11,2	11,0	11,1	10,9
Eastern Cape	4,0	4,3	4,0	4,3	4,4	4,1	4,3	3,9	3,8	3,8
Northern Cape	1,9	2,2	2,0	2,2	2,1	2,5	2,7	2,7	2,4	2,5
Free State	6,9	7,3	6,9	7,0	7,1	6,7	6,8	6,6	6,3	6,0
KwaZulu-Natal	17,0	17,4	17,2	17,1	17,1	16,0	16,0	15,5	16,0	15,6
North West	3,1	3,0	2,9	2,8	2,7	3,0	3,2	3,6	3,7	3,4
Gauteng	33,7	32,5	33,9	33,0	33,4	33,3	32,6	33,5	33,1	34,2
Mpumalanga	14,6	14,7	14,1	14,9	14,5	15,1	15,1	14,9	15,3	15,4
Limpopo	8,4	8,1	8,4	8,3	8,4	8,3	8,1	8,4	8,3	8,1
<b>Value added at basic prices</b>	<b>100,0</b>	<b>100,0</b>	<b>100,0</b>	<b>100,0</b>	<b>100,0</b>	<b>100,0</b>	<b>100,0</b>	<b>100,0</b>	<b>100,0</b>	<b>100,0</b>

**c. Constant 2005 prices - Rand million**

Province	2003	2004	2005	2006	2007	2008	2009	2010	2011	2012
Western Cape	3 055	3 279	3 477	3 546	3 630	3 490	3 514	3 561	3 600	3 615
Eastern Cape	1 192	1 263	1 317	1 365	1 397	1 356	1 378	1 386	1 393	1 346
Northern Cape	563	592	661	658	675	673	674	683	688	662
Free State	2 013	2 170	2 265	2 333	2 411	2 324	2 233	2 312	2 317	2 323
KwaZulu-Natal	4 979	5 343	5 691	5 879	6 075	5 831	5 602	5 669	5 737	5 547
North West	854	896	971	984	1 020	1 011	1 015	1 043	1 052	1 020
Gauteng	9 898	10 603	11 194	11 595	12 065	11 668	11 532	11 988	12 263	11 905
Mpumalanga	4 321	4 560	4 666	4 881	5 037	4 931	4 984	4 999	5 067	5 117
Limpopo	2 469	2 629	2 767	2 898	2 983	2 911	2 779	2 895	2 933	2 942
<b>Value added at basic prices</b>	<b>29 344</b>	<b>31 335</b>	<b>33 010</b>	<b>34 139</b>	<b>35 294</b>	<b>34 196</b>	<b>33 712</b>	<b>34 538</b>	<b>35 049</b>	<b>34 476</b>

**d. Constant 2005 prices - percentage changes**

Province	2003	2004	2005	2006	2007	2008	2009	2010	2011	2012
Western Cape	12,4	7,3	6,0	2,0	2,4	-3,8	0,7	1,3	1,1	0,4
Eastern Cape	12,6	5,9	4,3	3,6	2,4	-2,9	1,6	0,6	0,5	-3,4
Northern Cape	-0,7	5,1	11,7	-0,4	2,7	-0,4	0,2	1,3	0,6	-3,8
Free State	2,1	7,8	4,4	3,0	3,3	-3,6	-3,9	3,6	0,2	0,3
KwaZulu-Natal	-11,5	7,3	6,5	3,3	3,3	-4,0	-3,9	1,2	1,2	-3,3
North West	6,3	5,0	8,3	1,3	3,7	-0,9	0,3	2,8	0,8	-3,0
Gauteng	4,1	7,1	5,6	3,6	4,1	-3,3	-1,2	4,0	2,3	-2,9
Mpumalanga	4,3	5,5	2,3	4,6	3,2	-2,1	1,1	0,3	1,4	1,0
Limpopo	17,3	6,5	5,3	4,7	2,9	-2,4	-4,5	4,2	1,3	0,3
<b>Value added at basic prices</b>	<b>3,0</b>	<b>6,8</b>	<b>5,3</b>	<b>3,4</b>	<b>3,4</b>	<b>-3,1</b>	<b>-1,4</b>	<b>2,5</b>	<b>1,5</b>	<b>-1,6</b>

**Table 30 - Gross domestic product by region: Construction**

**a. Current prices - Rand million**

Province	2003	2004	2005	2006	2007	2008	2009	2010	2011	2012
Western Cape	5 275	5 897	7 691	8 941	10 491	12 643	15 185	16 292	17 657	18 605
Eastern Cape	1 769	2 120	2 409	2 382	2 976	4 222	5 104	5 458	4 555	4 969
Northern Cape	313	392	423	547	703	834	1 139	1 034	1 048	1 298
Free State	928	1 011	1 230	1 362	1 698	2 141	2 759	2 839	3 042	3 149
KwaZulu-Natal	3 904	5 358	5 729	6 715	8 255	10 379	12 752	13 273	13 261	14 293
North West	1 386	1 559	1 918	2 322	2 866	3 967	4 582	4 681	4 769	4 949
Gauteng	10 695	12 890	15 736	19 442	24 446	31 100	36 386	39 304	42 621	45 711
Mpumalanga	1 256	1 402	1 742	2 366	2 924	3 707	4 549	4 766	6 744	7 081
Limpopo	1 221	1 410	1 680	2 081	2 550	3 228	4 066	4 252	5 014	5 580
<b>Value added at basic prices</b>	<b>26 747</b>	<b>32 039</b>	<b>38 558</b>	<b>46 158</b>	<b>56 908</b>	<b>72 221</b>	<b>86 522</b>	<b>91 899</b>	<b>98 712</b>	<b>105 636</b>

**b. Current prices - percentage contributions**

Province	2003	2004	2005	2006	2007	2008	2009	2010	2011	2012
Western Cape	19,7	18,4	19,9	19,4	18,4	17,5	17,6	17,7	17,9	17,6
Eastern Cape	6,6	6,6	6,2	5,2	5,2	5,8	5,9	5,9	4,6	4,7
Northern Cape	1,2	1,2	1,1	1,2	1,2	1,2	1,3	1,1	1,1	1,2
Free State	3,5	3,2	3,2	3,0	3,0	3,0	3,2	3,1	3,1	3,0
KwaZulu-Natal	14,6	16,7	14,9	14,5	14,5	14,4	14,7	14,4	13,4	13,5
North West	5,2	4,9	5,0	5,0	5,0	5,5	5,3	5,1	4,8	4,7
Gauteng	40,0	40,2	40,8	42,1	43,0	43,1	42,1	42,8	43,2	43,3
Mpumalanga	4,7	4,4	4,5	5,1	5,1	5,1	5,3	5,2	6,8	6,7
Limpopo	4,6	4,4	4,4	4,5	4,5	4,5	4,7	4,6	5,1	5,3
<b>Value added at basic prices</b>	<b>100,0</b>	<b>100,0</b>	<b>100,0</b>	<b>100,0</b>	<b>100,0</b>	<b>100,0</b>	<b>100,0</b>	<b>100,0</b>	<b>100,0</b>	<b>100,0</b>

**c. Constant 2005 prices - Rand million**

Province	2003	2004	2005	2006	2007	2008	2009	2010	2011	2012
Western Cape	6 238	6 849	7 691	8 514	9 801	10 511	10 897	10 961	11 020	11 309
Eastern Cape	2 089	2 229	2 409	2 660	2 985	3 213	3 567	3 516	3 519	3 588
Northern Cape	371	377	423	453	516	557	628	611	612	623
Free State	1 097	1 169	1 230	1 305	1 510	1 606	1 772	1 674	1 682	1 722
KwaZulu-Natal	4 612	5 045	5 729	6 164	7 053	7 656	8 299	8 436	8 471	8 685
North West	1 636	1 724	1 918	2 077	2 384	2 598	2 667	2 570	2 572	2 626
Gauteng	12 606	13 985	15 736	17 586	20 369	22 194	24 319	24 750	24 791	25 339
Mpumalanga	1 482	1 568	1 742	1 919	2 216	2 430	2 635	2 671	2 673	2 716
Limpopo	1 445	1 504	1 680	1 905	2 137	2 380	2 496	2 518	2 530	2 599
<b>Value added at basic prices</b>	<b>31 575</b>	<b>34 451</b>	<b>38 558</b>	<b>42 582</b>	<b>48 971</b>	<b>53 145</b>	<b>57 279</b>	<b>57 707</b>	<b>57 869</b>	<b>59 206</b>

**d. Constant 2005 prices - percentage changes**

Province	2003	2004	2005	2006	2007	2008	2009	2010	2011	2012
Western Cape	1,5	9,8	12,3	10,7	15,1	7,2	3,7	0,6	0,5	2,6
Eastern Cape	30,9	6,7	8,1	10,4	12,2	7,6	11,0	-1,4	0,1	2,0
Northern Cape	-0,7	1,8	12,3	6,9	13,9	8,0	12,8	-2,7	0,1	1,8
Free State	6,0	6,6	5,2	6,1	15,7	6,3	10,4	-5,5	0,5	2,4
KwaZulu-Natal	4,7	9,4	13,6	7,6	14,4	8,6	8,4	1,6	0,4	2,5
North West	-4,0	5,4	11,3	8,3	14,8	9,0	2,7	-3,6	0,1	2,1
Gauteng	14,6	10,9	12,5	11,8	15,8	9,0	9,6	1,8	0,2	2,2
Mpumalanga	4,6	5,8	11,1	10,1	15,5	9,7	8,4	1,4	0,1	1,6
Limpopo	-12,7	4,1	11,7	13,4	12,2	11,4	4,9	0,9	0,5	2,7
<b>Value added at basic prices</b>	<b>7,7</b>	<b>9,1</b>	<b>11,9</b>	<b>10,4</b>	<b>15,0</b>	<b>8,5</b>	<b>7,8</b>	<b>0,7</b>	<b>0,3</b>	<b>2,3</b>

**Table 31 - Gross domestic product by region: Wholesale, retail and motor trade; catering and accommodation**

**a. Current prices - Rand million**

Province	2003	2004	2005	2006	2007	2008	2009	2010	2011	2012
Western Cape	26 339	31 417	32 236	38 313	42 597	46 428	51 808	62 251	70 780	78 598
Eastern Cape	13 378	13 455	15 829	16 798	18 658	21 799	24 125	29 597	32 532	37 773
Northern Cape	2 946	3 296	3 604	4 353	4 911	4 931	5 531	6 105	6 501	6 832
Free State	7 161	8 106	8 462	10 087	11 232	12 379	14 196	17 510	19 056	21 408
KwaZulu-Natal	26 605	28 923	32 960	36 010	39 937	45 403	50 166	61 330	71 606	80 621
North West	8 672	9 654	10 529	11 518	12 612	14 704	16 066	18 408	17 677	20 497
Gauteng	55 441	61 970	69 639	74 639	82 427	94 551	103 565	126 449	143 868	161 241
Mpumalanga	8 586	8 772	10 146	11 386	12 583	14 621	16 133	19 137	21 297	23 918
Limpopo	9 658	10 852	11 608	12 726	13 954	16 673	16 922	20 024	22 505	24 596
<b>Value added at basic prices</b>	<b>158 786</b>	<b>176 445</b>	<b>195 012</b>	<b>215 830</b>	<b>238 910</b>	<b>271 488</b>	<b>298 511</b>	<b>360 810</b>	<b>405 823</b>	<b>455 484</b>

**b. Current prices - percentage contributions**

Province	2003	2004	2005	2006	2007	2008	2009	2010	2011	2012
Western Cape	16,6	17,8	16,5	17,8	17,8	17,1	17,4	17,3	17,4	17,3
Eastern Cape	8,4	7,6	8,1	7,8	7,8	8,0	8,1	8,2	8,0	8,3
Northern Cape	1,9	1,9	1,8	2,0	2,1	1,8	1,9	1,7	1,6	1,5
Free State	4,5	4,6	4,3	4,7	4,7	4,6	4,8	4,9	4,7	4,7
KwaZulu-Natal	16,8	16,4	16,9	16,7	16,7	16,7	16,8	17,0	17,6	17,7
North West	5,5	5,5	5,4	5,3	5,3	5,4	5,4	5,1	4,4	4,5
Gauteng	34,9	35,1	35,7	34,6	34,5	34,8	34,7	35,0	35,5	35,4
Mpumalanga	5,4	5,0	5,2	5,3	5,3	5,4	5,4	5,3	5,2	5,3
Limpopo	6,1	6,2	6,0	5,9	5,8	6,1	5,7	5,5	5,5	5,4
<b>Value added at basic prices</b>	<b>100,0</b>	<b>100,0</b>	<b>100,0</b>	<b>100,0</b>	<b>100,0</b>	<b>100,0</b>	<b>100,0</b>	<b>100,0</b>	<b>100,0</b>	<b>100,0</b>

**c. Constant 2005 prices - Rand million**

Province	2003	2004	2005	2006	2007	2008	2009	2010	2011	2012
Western Cape	28 038	29 533	32 236	33 926	35 758	35 855	35 329	36 716	38 415	39 864
Eastern Cape	14 380	15 004	15 829	16 526	17 253	17 335	17 037	17 685	18 356	18 979
Northern Cape	3 220	3 353	3 604	3 753	3 937	3 998	3 783	3 863	4 098	4 217
Free State	7 790	8 213	8 462	8 978	9 346	9 410	9 088	9 369	9 707	10 460
KwaZulu-Natal	29 361	30 957	32 960	35 070	37 031	37 423	37 447	39 008	40 992	42 525
North West	9 322	9 828	10 529	11 079	11 595	11 697	11 018	11 274	11 655	12 012
Gauteng	61 209	64 780	69 639	74 046	78 422	79 409	78 817	82 211	86 068	89 386
Mpumalanga	9 201	9 654	10 146	10 796	11 315	11 466	11 497	11 732	12 062	12 457
Limpopo	10 325	10 854	11 608	12 463	12 949	13 155	13 059	13 481	13 940	14 378
<b>Value added at basic prices</b>	<b>172 845</b>	<b>182 175</b>	<b>195 012</b>	<b>206 636</b>	<b>217 607</b>	<b>219 749</b>	<b>217 074</b>	<b>225 338</b>	<b>235 295</b>	<b>244 278</b>

**d. Constant 2005 prices - percentage changes**

Province	2003	2004	2005	2006	2007	2008	2009	2010	2011	2012
Western Cape	3,1	5,3	9,2	5,2	5,4	0,3	-1,5	3,9	4,6	3,8
Eastern Cape	0,6	4,3	5,5	4,4	4,4	0,5	-1,7	3,8	3,8	3,4
Northern Cape	16,1	4,1	7,5	4,1	4,9	1,5	-5,4	2,1	6,1	2,9
Free State	3,0	5,4	3,0	6,1	4,1	0,7	-3,4	3,1	3,6	7,8
KwaZulu-Natal	3,5	5,4	6,5	6,4	5,6	1,1	0,1	4,2	5,1	3,7
North West	0,9	5,4	7,1	5,2	4,7	0,9	-5,8	2,3	3,4	3,1
Gauteng	3,8	5,8	7,5	6,3	5,9	1,3	-0,7	4,3	4,7	3,9
Mpumalanga	-1,4	4,9	5,1	6,4	4,8	1,3	0,3	2,0	2,8	3,3
Limpopo	-2,3	5,1	6,9	7,4	3,9	1,6	-0,7	3,2	3,4	3,1
<b>Value added at basic prices</b>	<b>2,7</b>	<b>5,4</b>	<b>7,0</b>	<b>6,0</b>	<b>5,3</b>	<b>1,0</b>	<b>-1,2</b>	<b>3,8</b>	<b>4,4</b>	<b>3,8</b>



**Table 32 - Gross domestic product by region: Transport, storage and communication**

**a. Current prices - Rand million**

Province	2003	2004	2005	2006	2007	2008	2009	2010	2011	2012
Western Cape	16 882	18 458	20 897	23 117	24 406	28 554	29 950	33 895	37 948	40 029
Eastern Cape	8 168	9 167	9 799	11 132	11 475	13 503	14 184	15 944	17 488	18 404
Northern Cape	2 427	2 551	2 930	3 270	3 645	3 890	4 065	4 160	5 104	5 463
Free State	5 225	5 700	6 447	7 079	7 938	8 847	8 975	9 852	10 999	11 209
KwaZulu-Natal	24 902	27 274	29 976	33 506	36 193	41 882	44 033	49 448	54 959	57 784
North West	6 859	7 216	7 889	8 856	9 227	10 759	11 465	12 640	11 682	11 799
Gauteng	34 258	38 827	44 449	48 293	52 052	60 210	63 731	72 207	84 124	88 587
Mpumalanga	7 301	7 703	8 380	9 459	10 004	11 488	11 805	12 926	11 987	12 124
Limpopo	6 614	7 891	8 703	9 064	9 527	10 649	11 068	11 775	11 300	11 974
<b>Value added at basic prices</b>	<b>112 637</b>	<b>124 786</b>	<b>139 472</b>	<b>153 775</b>	<b>164 467</b>	<b>189 782</b>	<b>199 276</b>	<b>222 847</b>	<b>245 590</b>	<b>257 374</b>

**b. Current prices - percentage contributions**

Province	2003	2004	2005	2006	2007	2008	2009	2010	2011	2012
Western Cape	15,0	14,8	15,0	15,0	14,8	15,0	15,0	15,2	15,5	15,6
Eastern Cape	7,3	7,3	7,0	7,2	7,0	7,1	7,1	7,2	7,1	7,2
Northern Cape	2,2	2,0	2,1	2,1	2,2	2,0	2,0	1,9	2,1	2,1
Free State	4,6	4,6	4,6	4,6	4,8	4,7	4,5	4,4	4,5	4,4
KwaZulu-Natal	22,1	21,9	21,5	21,8	22,0	22,1	22,1	22,2	22,4	22,5
North West	6,1	5,8	5,7	5,8	5,6	5,7	5,8	5,7	4,8	4,6
Gauteng	30,4	31,1	31,9	31,4	31,6	31,7	32,0	32,4	34,3	34,4
Mpumalanga	6,5	6,2	6,0	6,2	6,1	6,1	5,9	5,8	4,9	4,7
Limpopo	5,9	6,3	6,2	5,9	5,8	5,6	5,6	5,3	4,6	4,7
<b>Value added at basic prices</b>	<b>100,0</b>	<b>100,0</b>	<b>100,0</b>	<b>100,0</b>	<b>100,0</b>	<b>100,0</b>	<b>100,0</b>	<b>100,0</b>	<b>100,0</b>	<b>100,0</b>

**c. Constant 2005 prices - Rand million**

Province	2003	2004	2005	2006	2007	2008	2009	2010	2011	2012
Western Cape	18 171	19 168	20 897	21 775	23 292	23 956	24 241	24 704	25 512	26 047
Eastern Cape	8 972	9 241	9 799	10 223	10 811	11 140	11 307	11 493	11 819	12 027
Northern Cape	2 613	2 728	2 930	3 044	3 250	3 348	3 318	3 348	3 437	3 501
Free State	6 091	6 237	6 447	6 770	7 164	7 476	7 403	7 490	7 643	7 774
KwaZulu-Natal	27 088	28 302	29 976	31 535	33 784	35 199	35 759	36 716	37 781	38 750
North West	7 463	7 664	7 889	8 349	8 744	9 292	9 129	9 168	9 465	9 685
Gauteng	39 912	42 617	44 449	46 881	50 063	51 941	52 779	54 117	56 074	57 761
Mpumalanga	7 675	7 996	8 380	8 833	9 395	9 869	9 954	10 070	10 337	10 555
Limpopo	8 300	8 507	8 703	9 197	9 786	10 300	10 110	10 208	10 462	10 600
<b>Value added at basic prices</b>	<b>126 287</b>	<b>132 459</b>	<b>139 472</b>	<b>146 607</b>	<b>156 289</b>	<b>162 522</b>	<b>163 999</b>	<b>167 313</b>	<b>172 530</b>	<b>176 699</b>

**d. Constant 2005 prices - percentage changes**

Province	2003	2004	2005	2006	2007	2008	2009	2010	2011	2012
Western Cape	7,6	5,5	9,0	4,2	7,0	2,9	1,2	1,9	3,3	2,1
Eastern Cape	2,1	3,0	6,0	4,3	5,7	3,1	1,5	1,6	2,8	1,8
Northern Cape	5,8	4,4	7,4	3,9	6,8	3,0	-0,9	0,9	2,6	1,9
Free State	2,2	2,4	3,4	5,0	5,8	4,4	-1,0	1,2	2,0	1,7
KwaZulu-Natal	7,0	4,5	5,9	5,2	7,1	4,2	1,6	2,7	2,9	2,6
North West	8,3	2,7	2,9	5,8	4,7	6,3	-1,8	0,4	3,2	2,3
Gauteng	6,4	6,8	4,3	5,5	6,8	3,8	1,6	2,5	3,6	3,0
Mpumalanga	10,3	4,2	4,8	5,4	6,4	5,1	0,9	1,2	2,6	2,1
Limpopo	4,4	2,5	2,3	5,7	6,4	5,3	-1,8	1,0	2,5	1,3
<b>Value added at basic prices</b>	<b>6,3</b>	<b>4,9</b>	<b>5,3</b>	<b>5,1</b>	<b>6,6</b>	<b>4,0</b>	<b>0,9</b>	<b>2,0</b>	<b>3,1</b>	<b>2,4</b>

**Table 33 - Gross domestic product by region: Finance, real estate and business services**

**a. Current prices - Rand million**

Province	2003	2004	2005	2006	2007	2008	2009	2010	2011	2012
Western Cape	46 698	54 906	60 411	68 804	82 036	88 041	90 428	102 264	107 926	112 831
Eastern Cape	18 660	21 468	23 620	25 690	30 024	32 589	35 083	37 101	39 826	41 929
Northern Cape	3 070	3 766	4 138	5 036	5 988	6 429	6 866	7 299	7 330	8 134
Free State	10 041	11 266	12 831	14 587	16 850	17 900	18 880	20 501	21 381	23 633
KwaZulu-Natal	32 572	35 740	41 534	47 742	56 762	61 846	65 794	70 975	74 051	80 832
North West	10 277	11 034	13 117	13 999	16 233	17 529	18 416	19 726	20 656	24 183
Gauteng	87 900	99 068	113 555	131 593	160 581	173 323	184 757	202 730	225 578	250 327
Mpumalanga	9 204	10 719	10 802	13 585	16 201	17 983	19 615	20 692	22 024	25 028
Limpopo	12 753	13 319	15 495	18 274	20 845	22 948	24 992	26 129	28 213	30 997
<b>Value added at basic prices</b>	<b>231 176</b>	<b>261 285</b>	<b>295 503</b>	<b>339 311</b>	<b>405 520</b>	<b>438 587</b>	<b>464 831</b>	<b>507 418</b>	<b>546 984</b>	<b>597 893</b>

**b. Current prices - percentage contributions**

Province	2003	2004	2005	2006	2007	2008	2009	2010	2011	2012
Western Cape	20,2	21,0	20,4	20,3	20,2	20,1	19,5	20,2	19,7	18,9
Eastern Cape	8,1	8,2	8,0	7,6	7,4	7,4	7,5	7,3	7,3	7,0
Northern Cape	1,3	1,4	1,4	1,5	1,5	1,5	1,5	1,4	1,3	1,4
Free State	4,3	4,3	4,3	4,3	4,2	4,1	4,1	4,0	3,9	4,0
KwaZulu-Natal	14,1	13,7	14,1	14,1	14,0	14,1	14,2	14,0	13,5	13,5
North West	4,4	4,2	4,4	4,1	4,0	4,0	4,0	3,9	3,8	4,0
Gauteng	38,0	37,9	38,4	38,8	39,6	39,5	39,7	40,0	41,2	41,9
Mpumalanga	4,0	4,1	3,7	4,0	4,0	4,1	4,2	4,1	4,0	4,2
Limpopo	5,5	5,1	5,2	5,4	5,1	5,2	5,4	5,1	5,2	5,2
<b>Value added at basic prices</b>	<b>100,0</b>	<b>100,0</b>	<b>100,0</b>	<b>100,0</b>	<b>100,0</b>	<b>100,0</b>	<b>100,0</b>	<b>100,0</b>	<b>100,0</b>	<b>100,0</b>

**c. Constant 2005 prices - Rand million**

Province	2003	2004	2005	2006	2007	2008	2009	2010	2011	2012
Western Cape	53 629	57 856	60 411	66 090	71 511	76 889	77 080	78 531	82 609	85 600
Eastern Cape	20 624	22 065	23 620	24 985	26 785	28 739	28 491	28 904	30 034	31 065
Northern Cape	3 489	3 764	4 138	4 346	4 624	4 943	4 891	4 950	5 147	5 388
Free State	11 314	12 207	12 831	14 085	15 156	16 249	16 142	16 330	16 928	17 520
KwaZulu-Natal	35 031	37 562	41 534	44 730	48 201	51 761	52 600	53 886	56 480	58 368
North West	10 709	11 564	13 117	14 320	15 454	16 520	16 560	16 816	17 474	18 495
Gauteng	103 546	110 260	113 556	126 336	136 482	146 841	149 660	153 707	161 454	167 532
Mpumalanga	9 208	10 011	10 802	11 873	12 799	13 584	13 735	13 947	14 498	15 010
Limpopo	13 572	14 255	15 495	17 238	18 489	19 714	19 827	20 117	20 856	21 495
<b>Value added at basic prices</b>	<b>261 123</b>	<b>279 544</b>	<b>295 504</b>	<b>324 002</b>	<b>349 501</b>	<b>375 240</b>	<b>378 987</b>	<b>387 189</b>	<b>405 479</b>	<b>420 473</b>

**d. Constant 2005 prices - percentage changes**

Province	2003	2004	2005	2006	2007	2008	2009	2010	2011	2012
Western Cape	6,6	7,9	4,4	9,4	8,2	7,5	0,2	1,9	5,2	3,6
Eastern Cape	5,9	7,0	7,0	5,8	7,2	7,3	-0,9	1,4	3,9	3,4
Northern Cape	-3,0	7,9	9,9	5,0	6,4	6,9	-1,1	1,2	4,0	4,7
Free State	2,2	7,9	5,1	9,8	7,6	7,2	-0,7	1,2	3,7	3,5
KwaZulu-Natal	5,6	7,2	10,6	7,7	7,8	7,4	1,6	2,4	4,8	3,3
North West	4,9	8,0	13,4	9,2	7,9	6,9	0,2	1,5	3,9	5,8
Gauteng	3,9	6,5	3,0	11,3	8,0	7,6	1,9	2,7	5,0	3,8
Mpumalanga	4,5	8,7	7,9	9,9	7,8	6,1	1,1	1,5	3,9	3,5
Limpopo	5,7	5,0	8,7	11,2	7,3	6,6	0,6	1,5	3,7	3,1
<b>Value added at basic prices</b>	<b>4,8</b>	<b>7,1</b>	<b>5,7</b>	<b>9,6</b>	<b>7,9</b>	<b>7,4</b>	<b>1,0</b>	<b>2,2</b>	<b>4,7</b>	<b>3,7</b>

**Table 34 - Gross domestic product by region: Personal services**

**a. Current prices - Rand million**

Province	2003	2004	2005	2006	2007	2008	2009	2010	2011	2012
Western Cape	9 053	10 049	11 122	12 279	13 736	14 812	16 438	19 043	21 684	23 445
Eastern Cape	9 567	10 579	11 683	12 807	14 272	15 452	17 810	19 641	20 197	21 925
Northern Cape	2 342	2 596	2 888	3 161	3 567	3 675	4 409	5 306	5 323	5 885
Free State	7 452	8 247	9 113	10 008	11 108	12 159	13 808	15 556	15 737	16 963
KwaZulu-Natal	12 164	13 492	14 395	16 453	18 449	19 872	22 487	25 404	27 259	29 335
North West	6 453	7 116	7 957	8 552	9 445	10 343	11 422	12 287	13 365	14 330
Gauteng	17 398	19 321	21 007	23 637	26 434	28 818	32 319	34 609	37 486	40 574
Mpumalanga	4 402	4 857	5 361	5 844	6 461	7 178	8 057	8 986	8 888	9 457
Limpopo	3 983	4 394	4 928	5 288	5 972	6 476	7 425	8 009	7 931	8 593
<b>Value added at basic prices</b>	<b>72 814</b>	<b>80 651</b>	<b>88 455</b>	<b>98 028</b>	<b>109 445</b>	<b>118 785</b>	<b>134 174</b>	<b>148 840</b>	<b>157 870</b>	<b>170 506</b>

**b. Current prices - percentage contributions**

Province	2003	2004	2005	2006	2007	2008	2009	2010	2011	2012
Western Cape	12,4	12,5	12,6	12,5	12,6	12,5	12,3	12,8	13,7	13,8
Eastern Cape	13,1	13,1	13,2	13,1	13,0	13,0	13,3	13,2	12,8	12,9
Northern Cape	3,2	3,2	3,3	3,2	3,3	3,1	3,3	3,6	3,4	3,5
Free State	10,2	10,2	10,3	10,2	10,1	10,2	10,3	10,5	10,0	9,9
KwaZulu-Natal	16,7	16,7	16,3	16,8	16,9	16,7	16,8	17,1	17,3	17,2
North West	8,9	8,8	9,0	8,7	8,6	8,7	8,5	8,3	8,5	8,4
Gauteng	23,9	24,0	23,7	24,1	24,2	24,3	24,1	23,3	23,7	23,8
Mpumalanga	6,0	6,0	6,1	6,0	5,9	6,0	6,0	6,0	5,6	5,5
Limpopo	5,5	5,4	5,6	5,4	5,5	5,5	5,5	5,4	5,0	5,0
<b>Value added at basic prices</b>	<b>100,0</b>	<b>100,0</b>	<b>100,0</b>	<b>100,0</b>	<b>100,0</b>	<b>100,0</b>	<b>100,0</b>	<b>100,0</b>	<b>100,0</b>	<b>100,0</b>

**c. Constant 2005 prices - Rand million**

Province	2003	2004	2005	2006	2007	2008	2009	2010	2011	2012
Western Cape	10 469	10 663	11 122	11 596	12 228	12 732	12 569	12 602	12 881	13 175
Eastern Cape	11 145	11 324	11 683	12 302	12 952	13 394	13 338	13 416	13 749	14 124
Northern Cape	2 729	2 773	2 888	3 072	3 256	3 392	3 421	3 455	3 554	3 635
Free State	8 699	8 852	9 113	9 578	10 090	10 460	10 304	10 323	10 541	10 722
KwaZulu-Natal	13 683	13 925	14 395	15 158	15 993	16 596	16 592	16 703	17 130	17 516
North West	7 562	7 675	7 957	8 411	8 906	9 260	9 189	9 227	9 425	9 605
Gauteng	19 646	20 029	21 007	22 004	23 266	24 270	24 146	24 268	24 910	25 295
Mpumalanga	5 155	5 235	5 361	5 702	6 010	6 225	6 037	6 036	6 111	6 247
Limpopo	4 668	4 743	4 928	5 250	5 546	5 778	5 636	5 641	5 726	5 862
<b>Value added at basic prices</b>	<b>83 756</b>	<b>85 219</b>	<b>88 455</b>	<b>93 073</b>	<b>98 247</b>	<b>102 106</b>	<b>101 233</b>	<b>101 671</b>	<b>104 026</b>	<b>106 181</b>

**d. Constant 2005 prices - percentage changes**

Province	2003	2004	2005	2006	2007	2008	2009	2010	2011	2012
Western Cape	5,6	1,9	4,3	4,3	5,4	4,1	-1,3	0,3	2,2	2,3
Eastern Cape	5,2	1,6	3,2	5,3	5,3	3,4	-0,4	0,6	2,5	2,7
Northern Cape	5,3	1,6	4,1	6,4	6,0	4,2	0,9	1,0	2,9	2,3
Free State	5,5	1,8	3,0	5,1	5,3	3,7	-1,5	0,2	2,1	1,7
KwaZulu-Natal	5,6	1,8	3,4	5,3	5,5	3,8	0,0	0,7	2,6	2,3
North West	5,4	1,5	3,7	5,7	5,9	4,0	-0,8	0,4	2,1	1,9
Gauteng	5,9	2,0	4,9	4,7	5,7	4,3	-0,5	0,5	2,6	1,5
Mpumalanga	5,3	1,6	2,4	6,3	5,4	3,6	-3,0	0,0	1,2	2,2
Limpopo	5,4	1,6	3,9	6,5	5,6	4,2	-2,5	0,1	1,5	2,4
<b>Value added at basic prices</b>	<b>5,6</b>	<b>1,7</b>	<b>3,8</b>	<b>5,2</b>	<b>5,6</b>	<b>3,9</b>	<b>-0,9</b>	<b>0,4</b>	<b>2,3</b>	<b>2,1</b>

**Table 35 - Gross domestic product by region: General government services**

**a. Current prices - Rand million**

Province	2003	2004	2005	2006	2007	2008	2009	2010	2011	2012
Western Cape	17 078	18 583	20 751	22 334	24 574	28 692	34 271	37 947	41 679	44 896
Eastern Cape	19 437	21 365	23 111	25 367	28 585	32 341	37 578	43 893	47 387	51 119
Northern Cape	3 525	3 410	4 278	4 074	4 800	6 048	6 691	7 485	8 400	9 481
Free State	8 954	10 263	10 741	12 253	14 137	15 056	17 455	20 310	22 229	22 971
KwaZulu-Natal	23 932	27 423	28 432	32 784	37 283	42 349	49 780	56 559	62 307	69 331
North West	9 906	10 602	11 599	12 940	14 712	16 115	18 419	20 789	22 783	23 598
Gauteng	68 868	73 859	83 093	90 294	101 336	114 314	135 531	152 906	170 617	185 028
Mpumalanga	7 669	8 652	9 227	10 501	11 984	13 708	16 169	19 239	21 256	23 563
Limpopo	14 737	16 406	17 329	19 570	22 391	24 667	28 506	32 790	33 013	36 809
<b>Value added at basic prices</b>	<b>174 106</b>	<b>190 563</b>	<b>208 561</b>	<b>230 116</b>	<b>259 802</b>	<b>293 290</b>	<b>344 399</b>	<b>391 916</b>	<b>429 671</b>	<b>466 797</b>

**b. Current prices - percentage contributions**

Province	2003	2004	2005	2006	2007	2008	2009	2010	2011	2012
Western Cape	9,8	9,8	9,9	9,7	9,5	9,8	10,0	9,7	9,7	9,6
Eastern Cape	11,2	11,2	11,1	11,0	11,0	11,0	10,9	11,2	11,0	11,0
Northern Cape	2,0	1,8	2,1	1,8	1,8	2,1	1,9	1,9	2,0	2,0
Free State	5,1	5,4	5,2	5,3	5,4	5,1	5,1	5,2	5,2	4,9
KwaZulu-Natal	13,7	14,4	13,6	14,2	14,4	14,4	14,5	14,4	14,5	14,9
North West	5,7	5,6	5,6	5,6	5,7	5,5	5,3	5,3	5,3	5,1
Gauteng	39,6	38,8	39,8	39,2	39,0	39,0	39,4	39,0	39,7	39,6
Mpumalanga	4,4	4,5	4,4	4,6	4,6	4,7	4,7	4,9	4,9	5,0
Limpopo	8,5	8,6	8,3	8,5	8,6	8,4	8,3	8,4	7,7	7,9
<b>Value added at basic prices</b>	<b>100,0</b>	<b>100,0</b>	<b>100,0</b>	<b>100,0</b>	<b>100,0</b>	<b>100,0</b>	<b>100,0</b>	<b>100,0</b>	<b>100,0</b>	<b>100,0</b>

**c. Constant 2005 prices - Rand million**

Province	2003	2004	2005	2006	2007	2008	2009	2010	2011	2012
Western Cape	19 381	19 971	20 751	21 295	22 099	23 084	24 028	24 856	26 008	26 819
Eastern Cape	21 744	22 080	23 111	23 827	24 628	25 639	26 342	27 126	28 344	29 024
Northern Cape	4 014	4 040	4 278	4 402	4 572	4 739	4 849	4 971	5 248	5 396
Free State	10 159	10 398	10 741	11 122	11 548	11 988	12 433	12 740	13 243	13 547
KwaZulu-Natal	26 844	27 206	28 432	29 279	30 470	31 971	33 217	34 410	35 853	36 820
North West	11 017	11 121	11 599	11 980	12 529	12 995	13 454	13 745	14 235	14 678
Gauteng	77 782	79 529	83 093	85 583	88 898	93 481	97 684	100 948	105 426	108 569
Mpumalanga	8 827	8 955	9 227	9 548	9 921	10 207	10 514	10 729	11 159	11 549
Limpopo	16 425	16 646	17 329	17 911	18 619	19 311	20 021	20 491	20 978	21 313
<b>Value added at basic prices</b>	<b>196 193</b>	<b>199 947</b>	<b>208 561</b>	<b>214 947</b>	<b>223 284</b>	<b>233 416</b>	<b>242 542</b>	<b>250 014</b>	<b>260 494</b>	<b>267 714</b>

**d. Constant 2005 prices - percentage changes**

Province	2003	2004	2005	2006	2007	2008	2009	2010	2011	2012
Western Cape	2,2	3,0	3,9	2,6	3,8	4,5	4,1	3,4	4,6	3,1
Eastern Cape	1,0	1,5	4,7	3,1	3,4	4,1	2,7	3,0	4,5	2,4
Northern Cape	1,0	0,7	5,9	2,9	3,9	3,7	2,3	2,5	5,6	2,8
Free State	3,4	2,4	3,3	3,5	3,8	3,8	3,7	2,5	3,9	2,3
KwaZulu-Natal	2,2	1,3	4,5	3,0	4,1	4,9	3,9	3,6	4,2	2,7
North West	0,5	0,9	4,3	3,3	4,6	3,7	3,5	2,2	3,6	3,1
Gauteng	4,0	2,2	4,5	3,0	3,9	5,2	4,5	3,3	4,4	3,0
Mpumalanga	5,5	1,4	3,0	3,5	3,9	2,9	3,0	2,0	4,0	3,5
Limpopo	1,2	1,3	4,1	3,4	3,9	3,7	3,7	2,3	2,4	1,6
<b>Value added at basic prices</b>	<b>2,8</b>	<b>1,9</b>	<b>4,3</b>	<b>3,1</b>	<b>3,9</b>	<b>4,5</b>	<b>3,9</b>	<b>3,1</b>	<b>4,2</b>	<b>2,8</b>

**Table 36 - Supply and use tables: 2009 (R million)**

Supply table 2009	Total supply at purchasers' prices	Taxes less subsidies on products	Trade and transport margins	Total supply at basic prices	Agriculture, forestry, fishing	Mining and quarrying	Manufacturing	Electricity, gas and water	Construction	Trade, hotels, restaurants	Transport, communication	Finance, business services	Other services	Total industry	Imports	C.i.f / f.o.b. adjustment
Agriculture,forestry,fishing	173 374	5 371	13 575	154 428	144 850	-	2 360	-	-	-	-	-	-	147 209	7 219	-
Ores,minerals,electricity,water	438 235	6 520	10 426	421 288	-	322 609	-	21 909	-	-	-	-	-	344 519	76 770	-
Food,beverages,textiles,apparel	548 001	57 823	87 652	402 526	-	-	345 399	-	-	-	-	-	-	345 399	57 127	-
Wood,chemicals,non-metallic	838 728	63 925	158 748	616 055	-	-	501 256	-	-	-	-	-	-	501 256	114 799	-
Metal,machinery,equipment	935 554	35 105	131 876	768 572	-	-	449 329	-	-	-	6 492	-	-	455 820	312 752	-
Construction	297 109	4 735	-	292 374	1 834	-	-	-	289 969	-	-	-	-	291 803	571	-
Trade,transport,distribution	500 778	5 820	-402 278	897 235	-	1 403	-	97 035	-	474 773	284 105	-	-	857 316	70 497	-30 578
Financial,real estate,leasing	695 491	17 718	-	677 772	-	274	6 076	252	8 182	4 042	1 873	651 102	604	672 405	8 873	-3 505
Business,production services	519 710	11 530	-	508 179	-	3 980	84 789	-	-	61 043	137 227	203 182	-	490 220	17 959	-
Community,social,personal	941 673	19 534	-	922 140	-	6 563	8 764	-	-	8 113	-	11 564	879 229	914 233	7 907	-
C.i.f / f.o.b. adjustment	-	-	-	-	-	-	-	-	-	-	-	-	-	-	-34 083	34 083
Purchases by residents	37 918	-	-	37 918	-	-	-	-	-	-	-	-	-	-	37 918	-
<b>Total supply at basic prices</b>	<b>5 926 570</b>	<b>228 081</b>	<b>0</b>	<b>5 698 489</b>	<b>146 683</b>	<b>334 829</b>	<b>1 397 973</b>	<b>119 196</b>	<b>298 151</b>	<b>547 970</b>	<b>429 697</b>	<b>865 848</b>	<b>879 833</b>	<b>5 020 181</b>	<b>678 308</b>	<b>-</b>

Use table 2009	Total supply at purchasers' prices	Taxes less subsidies on products	Trade and transport margins		Agriculture, forestry, fishing	Mining and quarrying	Manufacturing	Electricity, gas and water	Construction	Trade, hotels, restaurants	Transport, communication	Finance, business services	Other services	Total industry	Total economy	Components of final demand
Agriculture,forestry,fishing	173 374				2 797	22	84 371	10	5	519	9	97	502	88 332		85 042
Ores,minerals,electricity,water	438 235				2 920	7 366	184 371	25 620	6 025	109	1 174	-	3 087	230 673		207 562
Food,beverages,textiles,apparel	548 001				16 834	2 216	90 729	88	3 220	15 722	4 504	1 855	6 543	141 710		406 291
Wood,chemicals,non-metallic	838 728				27 862	30 805	242 325	3 215	74 185	52 821	63 185	36 840	41 815	573 054		265 674
Metal,machinery,equipment	935 554				6 099	27 854	206 582	6 128	59 102	17 465	18 845	11 624	44 881	398 580		536 974
Construction	297 109				275	3 096	13 104	356	16 059	1 497	14 214	10 614	3 731	62 946		234 162
Trade,transport,distribution	500 778				15 605	41 943	77 478	13 732	5 076	35 217	47 881	52 965	23 650	313 547		187 230
Financial,real estate,leasing	695 491				5 398	14 144	34 754	5 903	10 431	59 279	24 576	201 165	28 400	384 051		311 439
Business,production services	519 710				512	6 933	75 812	3 563	35 953	64 536	43 454	55 745	139 865	426 372		93 337
Community,social,personal	941 673				4 727	3 929	56 746	178	1 573	2 291	12 578	30 112	108 786	220 920		720 753
Purchases by residents	37 918				-	-	-	-	-	-	-	-	-	-		37 918
Purchases by non-residents					-	-	-	-	-	-	-	-	-	-		-
<b>Total uses (purchasers' prices)</b>	<b>5 926 570</b>				<b>83 028</b>	<b>138 308</b>	<b>1 066 270</b>	<b>58 794</b>	<b>211 629</b>	<b>249 459</b>	<b>230 421</b>	<b>401 017</b>	<b>401 260</b>	<b>2 840 186</b>		<b>3 086 384</b>
<b>Gross value added / GDP</b>		<b>228081</b>			<b>63 655</b>	<b>196 521</b>	<b>331 703</b>	<b>60 402</b>	<b>86 522</b>	<b>298 511</b>	<b>199 276</b>	<b>464 831</b>	<b>478 573</b>	<b>2 179 995</b>	<b>2 408 076</b>	
<b>Total output at basic prices</b>					<b>146 683</b>	<b>334 829</b>	<b>1 397 973</b>	<b>119 196</b>	<b>298 151</b>	<b>547 970</b>	<b>429 697</b>	<b>865 848</b>	<b>879 833</b>	<b>5 020 181</b>		

**Table 37 - Supply and use tables: 2010 (R million)**

Supply table 2010	Total supply at purchasers' prices	Taxes less subsidies on products	Trade and transport margins	Total supply at basic prices	Agriculture, forestry, fishing	Mining and quarrying	Manufacturing	Electricity, gas and water	Construction	Trade, hotels, restaurants	Transport, communication	Finance, business services	Other services	Total industry	Imports	C.i.f / f.o.b. adjustment
Agriculture,forestry,fishing	182 547	5 731	15 856	160 960	151 250	-	2 548	-	-	-	-	-	-	153 798	7 163	-
Ores,minerals,electricity,water	486 371	6 988	11 977	467 406	-	367 793	-	23 790	-	-	-	-	-	391 584	75 822	-
Food,beverages,textiles,apparel	595 578	65 864	102 534	427 181	-	-	368 174	-	-	-	-	-	-	368 174	59 007	-
Wood,chemicals,non-metallic	907 199	71 937	185 700	649 561	-	-	514 123	-	-	-	-	-	-	514 123	135 438	-
Metal,machinery,equipment	1 005 944	39 300	154 424	812 221	-	-	464 095	-	-	-	7 035	-	-	471 130	341 091	-
Construction	315 311	5 023	-	310 287	1 875	-	-	-	307 906	-	-	-	-	309 781	506	-
Trade,transport,distribution	532 410	2 494	-470 490	1 000 406	-	1 609	-	104 117	-	546 386	305 697	-	-	957 810	75 802	-33 206
Financial,real estate,leasing	752 693	18 748	-	733 945	-	317	6 470	277	8 516	4 676	1 923	705 400	663	728 241	9 539	-3 834
Business,production services	568 593	11 814	-	556 779	-	4 595	88 117	-	-	71 226	145 552	225 095	-	534 585	22 193	-
Community,social,personal	1 059 385	22 510	-	1 036 875	-	7 535	9 096	-	-	9 353	-	12 728	988 610	1 027 322	9 553	-
C.i.f / f.o.b. adjustment	-	-	-	-	-	-	-	-	-	-	-	-	-	-	-37 040	37 040
Purchases by residents	42 814	-	-	42 814	-	-	-	-	-	-	-	-	-	-	42 814	-
<b>Total supply at basic prices</b>	<b>6 448 845</b>	<b>250 410</b>	<b>-</b>	<b>6 198 435</b>	<b>153 125</b>	<b>381 849</b>	<b>1 452 623</b>	<b>128 185</b>	<b>316 422</b>	<b>631 640</b>	<b>460 207</b>	<b>943 223</b>	<b>989 273</b>	<b>5 456 548</b>	<b>741 887</b>	<b>-</b>

Use table 2010	Total supply at purchasers' prices	Taxes less subsidies on products	Trade and transport margins		Agriculture, forestry, fishing	Mining and quarrying	Manufacturing	Electricity, gas and water	Construction	Trade, hotels, restaurants	Transport, communication	Finance, business services	Other services	Total industry	Total economy	Components of final demand
Agriculture,forestry,fishing	182 547				3 048	23	88 582	11	5	573	9	103	556	92 912		89 636
Ores,minerals,electricity,water	486 371				3 181	8 345	193 157	28 902	6 394	121	1 215	0	3 441	244 756		241 615
Food,beverages,textiles,apparel	595 578				18 338	2 438	93 764	99	3 414	17 340	4 660	1 972	7 258	149 284		446 294
Wood,chemicals,non-metallic	907 199				30 352	34 168	249 643	3 536	78 649	57 426	65 353	39 248	46 507	604 883		302 316
Metal,machinery,equipment	1 005 944				6 643	30 813	215 195	6 813	62 927	19 149	19 468	12 385	50 145	423 539		582 405
Construction	315 311				299	3 534	13 672	378	16 962	1 646	14 533	11 315	4 183	66 523		248 788
Trade,transport,distribution	532 410				16 999	46 128	80 305	14 786	5 385	38 342	49 308	56 392	26 638	334 284		198 127
Financial,real estate,leasing	752 693				5 791	15 843	35 817	6 434	11 017	63 665	25 243	222 319	31 110	417 239		335 453
Business,production services	568 593				557	7 875	78 161	3 951	38 103	70 045	44 605	59 883	155 557	458 738		109 855
Community,social,personal	1 059 385				5 149	4 451	58 772	193	1 667	2 523	12 968	32 187	123 122	241 033		818 352
Purchases by residents	42 814				-	-	-	-	-	-	-	-	-	-		42 814
Purchases by non-residents	-				-	-	-	-	-	-	-	-	-	-		-
<b>Total uses (purchasers' prices)</b>	<b>6 448 845</b>				<b>90 357</b>	<b>153 619</b>	<b>1 107 068</b>	<b>65 106</b>	<b>224 524</b>	<b>270 831</b>	<b>237 362</b>	<b>435 805</b>	<b>448 518</b>	<b>3 033 189</b>		<b>3 415 655</b>
<b>Gross value added / GDP</b>		<b>250 410</b>			<b>62 768</b>	<b>228 230</b>	<b>345 555</b>	<b>63 080</b>	<b>91 899</b>	<b>360 810</b>	<b>222 845</b>	<b>507 418</b>	<b>540 755</b>	<b>2 423 358</b>	<b>2 673 768</b>	
<b>Total output at basic prices</b>					<b>153 125</b>	<b>381 849</b>	<b>1 452 623</b>	<b>128 185</b>	<b>316 422</b>	<b>631 640</b>	<b>460 207</b>	<b>943 223</b>	<b>989 273</b>	<b>5 456 548</b>		

**Table 38 - Supply and use tables: 2011 (R million)**

Supply table 2011	Total supply at purchasers' prices	Taxes less subsidies on products	Trade and transport margins	Total supply at basic prices	Agriculture, forestry, fishing	Mining and quarrying	Manufacturing	Electricity, gas and water	Construction	Trade, hotels, restaurants	Transport, communication	Finance, business services	Other services	Total industry	Imports	C.i.f / f.o.b. adjustment
Agriculture, forestry, fishing	196 134	6 833	17 690	171 611	159 045	-	2 659	-	-	-	-	-	-	161 704	9 907	-
Ores, minerals, electricity, water	560 729	8 345	13 291	539 094	-	427 740	-	26 754	-	-	-	-	-	454 494	84 600	-
Food, beverages, textiles, apparel	650 260	77 160	114 444	458 656	-	-	385 216	-	-	-	-	-	-	385 216	73 440	-
Wood, chemicals, non-metallic	1 004 994	83 433	207 270	714 291	-	-	530 281	-	-	-	-	-	-	530 281	184 010	-
Metal, machinery, equipment	1 116 944	47 585	172 416	896 943	-	-	491 857	-	-	-	7 384	-	-	499 241	397 702	-
Construction	342 861	5 978	-	336 883	1 966	-	-	-	334 413	-	-	-	-	336 379	503	-
Trade, transport, distribution	579 695	6 336	-525 110	1 098 469	-	1 849	-	117 286	-	603 662	330 149	-	-	1 052 945	82 921	-37 397
Financial, real estate, leasing	812 897	22 359	-	790 537	-	366	6 685	312	9 284	5 131	2 103	759 575	709	784 166	10 976	-4 604
Business, production services	626 237	14 444	-	611 793	-	5 271	91 203	-	-	80 815	161 221	246 555	-	585 066	26 727	-
Community, social, personal	1 157 634	25 224	-	1 132 410	-	8 654	9 417	-	-	10 255	-	13 877	1 077 254	1 119 457	12 953	-
C.i.f / f.o.b. adjustment	-	-	-	-	-	-	-	-	-	-	-	-	-	-	-42 001	42 001
Purchases by residents	43 171	-	-	43 171	-	-	-	-	-	-	-	-	-	-	43 171	-
<b>Total supply at basic prices</b>	<b>7 091 555</b>	<b>297 697</b>	<b>-</b>	<b>6 793 858</b>	<b>161 011</b>	<b>443 880</b>	<b>1 517 319</b>	<b>144 352</b>	<b>343 697</b>	<b>699 863</b>	<b>500 857</b>	<b>1 020 008</b>	<b>1 077 963</b>	<b>5 908 950</b>	<b>884 908</b>	<b>-</b>

Use table 2011	Total supply at purchasers' prices	Taxes less subsidies on products	Trade and transport margins		Agriculture, forestry, fishing	Mining and quarrying	Manufacturing	Electricity, gas and water	Construction	Trade, hotels, restaurants	Transport, communication	Finance, business services	Other services	Total industry	Total economy	Components of final demand
Agriculture, forestry, fishing	196 134				3 230	26	92 872	13	5	607	10	112	607	97 482		98 652
Ores, minerals, electricity, water	560 729				3 371	9 221	208 346	31 536	6 976	127	1 307	0	3 760	264 646		296 083
Food, beverages, textiles, apparel	650 260				19 432	2 692	99 554	109	3 686	18 380	5 016	2 136	7 926	158 930		491 330
Wood, chemicals, non-metallic	1 004 994				32 164	37 724	264 659	3 926	85 665	62 219	70 348	42 449	50 801	649 956		355 038
Metal, machinery, equipment	1 116 944				7 039	33 993	230 217	7 470	68 757	21 180	20 929	13 412	54 818	457 815		659 130
Construction	342 861				317	3 924	14 547	415	18 496	1 755	15 673	12 178	4 575	71 880		270 981
Trade, transport, distribution	579 695				18 013	50 607	85 667	16 275	5 884	41 786	52 932	61 960	29 133	362 257		217 438
Financial, real estate, leasing	812 897				6 195	17 513	38 367	7 060	12 049	69 489	27 146	240 560	34 277	452 656		360 241
Business, production services	626 237				590	8 723	82 974	4 327	41 644	75 793	47 966	64 940	169 741	496 699		129 538
Community, social, personal	1 157 634				5 457	4 927	62 475	212	1 823	2 703	13 940	35 278	134 783	261 598		896 036
Purchases by residents	43 171				-	-	-	-	-	-	-	-	-	-		-
Purchases by non-residents	-				-	-	-	-	-	-	-	-	-	-		-
<b>Total uses (purchasers' prices)</b>	<b>7 091 555</b>				<b>95 808</b>	<b>169 349</b>	<b>1 179 680</b>	<b>71 343</b>	<b>244 986</b>	<b>294 040</b>	<b>255 266</b>	<b>473 024</b>	<b>490 423</b>	<b>3 273 918</b>		<b>3 817 637</b>
<b>Gross value added / GDP</b>		<b>297 697</b>			<b>65 204</b>	<b>274 530</b>	<b>337 639</b>	<b>73 010</b>	<b>98 712</b>	<b>405 823</b>	<b>245 590</b>	<b>546 984</b>	<b>587 541</b>	<b>2 635 032</b>	<b>2 932 729</b>	
<b>Total output at basic prices</b>					<b>161 011</b>	<b>443 880</b>	<b>1 517 319</b>	<b>144 352</b>	<b>343 697</b>	<b>699 863</b>	<b>500 857</b>	<b>1 020 008</b>	<b>1 077 963</b>	<b>5 908 950</b>		

**Table 39 - Supply and use tables: 2012 (R million)**

Supply table 2012	Total supply at purchasers' prices	Taxes less subsidies on products	Trade and transport margins	Total supply at basic prices	Agriculture, forestry, fishing	Mining and quarrying	Manufacturing	Electricity, gas and water	Construction	Trade, hotels, restaurants	Transport, communication	Finance, business services	Other services	Total industry	Imports	C.i.f./f.o.b. adjustment
Agriculture,forestry,fishing	211 920	7 383	19 595	184 942	172 069	-	2 781	-	-	-	-	-	-	174 850	10 092	-
Ores,minerals,electricity,water	588 394	9 046	14 615	564 734	-	436 337	-	30 135	-	-	-	-	-	466 472	98 262	-
Food,beverages,textiles,apparel	705 394	85 455	126 854	493 084	-	-	409 514	-	-	-	-	-	-	409 514	83 570	-
Wood,chemicals,non-metallic	1 085 567	90 607	229 747	765 214	-	-	555 042	-	-	-	-	-	-	555 042	210 172	-
Metal,machinery,equipment	1 237 165	53 155	191 198	992 812	-	-	522 404	-	-	-	7 868	-	-	530 272	462 540	-
Construction	366 825	6 433	-	360 393	2 136	-	-	-	357 609	-	-	-	-	359 745	648	-
Trade,transport,distribution	617 825	1 053	-582 009	1 198 780	-	1 916	-	132 295	-	666 103	351 331	-	-	1 151 644	87 505	-40 369
Financial,real estate,leasing	884 685	23 977	-	860 708	-	381	7 137	352	10 290	5 684	2 245	827 479	762	854 330	11 650	-5 272
Business,production services	664 273	14 885	-	649 388	-	5 539	95 666	-	-	89 232	168 165	265 403	-	624 005	25 384	-
Community,social,personal	1 258 250	26 725	-	1 231 524	-	8 994	9 859	-	-	11 274	-	14 931	1 173 382	1 218 440	13 084	-
C.i.f./f.o.b. adjustment	-	-	-	-	-	-	-	-	-	-	-	-	-	-	-45 641	45 641
Purchases by residents	42 178	-	-	42 178	-	-	-	-	-	-	-	-	-	-	42 178	-
<b>Total supply at basic prices</b>	<b>7 662 476</b>	<b>318 719</b>	<b>-</b>	<b>7 343 757</b>	<b>174 205</b>	<b>453 166</b>	<b>1 602 402</b>	<b>162 782</b>	<b>367 899</b>	<b>772 292</b>	<b>529 609</b>	<b>1 107 814</b>	<b>1 174 144</b>	<b>6 344 313</b>	<b>999 444</b>	<b>-</b>

Use table 2012	Total supply at purchasers' prices	Taxes less subsidies on products	Trade and transport margins		Agriculture, forestry, fishing	Mining and quarrying	Manufacturing	Electricity, gas and water	Construction	Trade, hotels, restaurants	Transport, communication	Finance, business services	Other services	Total industry	Total economy	Components of final demand
Agriculture,forestry,fishing	211 920				3 478	28	98 307	14	6	638	11	118	662	103 262		108 658
Ores,minerals,electricity,water	588 394				3 628	9 911	225 335	34 390	7 466	134	1 397	0	4 111	286 371		302 023
Food,beverages,textiles,apparel	705 394				20 917	2 932	106 045	119	3 949	19 350	5 358	2 251	8 645	169 566		535 827
Wood,chemicals,non-metallic	1 085 567				34 622	40 919	282 785	4 329	91 611	67 140	75 146	44 843	55 480	696 875		388 692
Metal,machinery,equipment	1 237 165				7 577	36 897	245 568	8 192	73 659	23 012	22 306	14 183	60 001	491 395		745 770
Construction	366 825				341	4 234	15 549	458	19 750	1 859	16 683	12 799	5 016	76 689		290 137
Trade,transport,distribution	617 825				19 390	54 406	91 568	18 024	6 316	45 249	56 255	65 670	31 985	388 864		228 961
Financial,real estate,leasing	884 685				6 726	18 988	41 188	7 803	12 981	75 052	29 102	262 643	37 391	491 874		392 811
Business,production services	664 273				635	9 427	88 554	4 745	44 577	81 507	51 183	69 863	185 138	535 628		128 646
Community,social,personal	1 258 250				5 873	5 327	66 520	233	1 948	2 868	14 795	37 552	148 411	283 529		974 721
Purchases by residents	42 178				-	-	-	-	-	-	-	-	-	-		42 178
Purchases by non-residents	-				-	-	-	-	-	-	-	-	-	-		-
<b>Total uses (purchasers' prices)</b>	<b>7 662 476</b>				<b>103 187</b>	<b>183 070</b>	<b>1 261 419</b>	<b>78 307</b>	<b>262 263</b>	<b>316 808</b>	<b>272 235</b>	<b>509 921</b>	<b>536 841</b>	<b>3 524 052</b>		<b>4 138 424</b>
<b>Gross value added / GDP</b>		<b>318 719</b>			<b>71 018</b>	<b>270 096</b>	<b>340 983</b>	<b>84 475</b>	<b>105 636</b>	<b>455 484</b>	<b>257 374</b>	<b>597 893</b>	<b>637 303</b>	<b>2 820 261</b>	<b>3 138 980</b>	
<b>Total output at basic prices</b>					<b>174 205</b>	<b>453 166</b>	<b>1 602 402</b>	<b>162 782</b>	<b>367 899</b>	<b>772 292</b>	<b>529 609</b>	<b>1 107 814</b>	<b>1 174 144</b>	<b>6 344 313</b>		



## ADDITIONAL INFORMATION

### Explanatory notes

#### Introduction

This Statistical Release contains independently compiled annual estimates of the gross domestic product (GDP) for the period 2003 to 2012. It also contains quarterly estimates of the GDP for the period 2003 to the third quarter of 2013. The estimates are based on the 1993 System of National Accounts (SNA) published by the United Nations in co-operation with other international organisations. This means that the methodology, concepts and classifications are in accordance with the guidelines of an internationally agreed system of national accounts. The estimates of real GDP are expressed in terms of a 2005 base year.

#### Methodology

Annual GDP estimates are calculated independently from the quarterly estimates within a supply and use framework. Alternatively, annual GDP estimates are derived as the sum of the GDP for the four quarters of the relevant year in the absence of supply and use tables.

Short-term indicators are used to estimate the quarterly GDP (cf. Statistical sources and methods). However, they are by their nature incomplete in terms of coverage, and annual changes of output measured through them are generally not as reliable as in instances where the results of annual surveys are used. Therefore, the quarterly estimates must be adapted to the independent annual estimates when such estimates become available.

Regional value added and GDP estimates are calculated through the production and income approaches. The production and generation of income accounts (cf. Methodological notes) are compiled per economic activity and therefore estimates of value added by industry are available per province. The total of the regional value added by industry and GDP estimates are consistent with the annual national value added by industry and GDP estimates.

Estimates are based on a variety of sources. Industry censuses and large sample surveys are used for the bottom-up method and other less detailed data are used for the top-down method. Mixed methods (combination of the bottom-up and top-down methods) are used due to data source constraints as well as an approach to improve the quality of the estimates (cf. Statistical sources).

#### Classifications

The estimates of value added by industry are classified according to the Standard Industrial Classification of all Economic Activities (SIC), fifth edition. SIC is based on the third revision of the International Standard Industrial Classification of all Economic Activities (ISIC), with suitable adaptations for South African conditions. The Central Product Classification (CPC) is used to classify the supply and use of products and services.

#### Seasonal adjustment

The quarterly value added and GDP estimates have been seasonally adjusted. Seasonal adjustment is a means of removing the estimated effects of normal seasonal variation from the series so that the effects of other influences on the series can be more clearly recognised. Seasonal adjustment does not aim to remove irregular or non-seasonal influences which may be present in any particular quarter. Influences that are volatile or unsystematic can still make interpretation difficult.

**Reliability of estimates** Revision of the estimates for all components of the national accounts is usually done every five years in conjunction with the rebasing of the estimates at constant prices. At such a time the results of censuses that have become available in the meantime and any other additional information sources are incorporated in the estimates. Due to the availability of more comprehensive data, revisions are also made of estimates for the latest quarters and, once a year, for the three latest years.

**Related publications** Users may also wish to refer to the following publications from Stats SA -  
 Annual Financial Statistics  
 Quarterly Financial Statistics  
 Quarterly Employment Statistics  
 Quarterly Labour Force Survey  
 Producer Price Index  
 Consumer Price Index  
 Financial statistics of consolidated general government  
 Various monthly surveys

**Unpublished statistics** In some cases Stats SA can also make available unpublished information to users. This information can be made available electronically or through printouts.

**Pre-release policy** Stats SA keeps new estimates of economic indicators strictly confidential prior to the date and time of release. To enable selected government departments to prepare their public responses, the following pre-release procedure is applied. It accords with practice in leading statistical agencies.

A strict lock-up procedure is put in place that allows media and government officials access to the data one hour before embargo. There are, however, strict controls to ensure that the information is not disseminated outside of the lock-up facility before the embargo time.

**Symbols and abbreviations**

CPC	Central Product Classification
DAFF	Department of Agriculture, Forestry and Fishing
DMR	Department of Mineral Resources
DWA	Department of Water Affairs
SARB	South African Reserve Bank
SARS	South African Revenue Service
SIC	Standard Industrial Classification
SNA	System of National Accounts
Stats SA	Statistics South Africa

### Classification of industries

The industries used in estimating the value added were classified according to the Standard Industrial Classification of all Economic Activities (SIC), fifth edition. It is based on the third revision of the International Standard Industrial Classification of all Economic Activities (ISIC), with suitable adaptations for local conditions. For the convenience of users, the SIC is duplicated in this statistical release for easy reference. Two versions of SIC are presented, namely Table K showing only those categories of the SIC which have been used in the national accounts tables in this statistical release and Table L showing the full version of SIC (5<sup>th</sup> edition).

**Table K - Categories used in the national accounts**

Title in the national accounts tables	Major division of SIC	Division of SIC
Agriculture, forestry and fishing Agriculture Forestry Fishing	1	11 12 13
Mining and quarrying Coal mining Gold mining Platinum group metals Other metal ores Other mining and quarrying	2	21 23 24 24 22, 25, 29
Manufacturing Food, beverages and tobacco products Textiles, clothing and leather goods Wood and paper; publishing and printing Petroleum products, chemicals, rubber and plastic Other non-metallic mineral products Metals, metal products, machinery and equipment Electrical machinery and apparatus Radio, TV, instruments, watches and clocks Transport equipment Furniture; other manufacturing	3	30 31 32 33 34 35 36 37 38 39
Electricity, gas and water Electricity and gas Water	4	41 42
Construction	5	
Wholesale, retail, and motor trade; catering and accommodation Wholesale trade Retail trade; repair of household goods Motor trade; repair of motor vehicles Catering and accommodation	6	61 62 63 64

**Table K - Categories used in the national accounts (concluded)**

Title in the national accounts tables	Major division of SIC	Division of SIC
Transport, storage and communication Transport and storage Communication	7	71-74 75
Finance, real estate and business services Finance and insurance Real estate Business services	8	81-83 84 85-88
Personal services	9 <sup>1</sup>	
General government services	9 <sup>1</sup>	

<sup>1</sup> Major division 9 of SIC - Community, social and personal services - has been disaggregated into two categories in the national accounts tables. These categories follow other criteria than SIC and cannot be defined in terms of the divisions and groups of SIC 9. The first category - Personal services - includes private enterprises. They are market producers. In addition, it includes non-profit institutions serving households (NPISH) and domestic workers. These are non-market producers. The second category - General government services - comprises the activities of general government in producing non-market community and social services, e.g. public administration, defence, health and education.

**Table L - Standard Industrial Classification of All Economic Activities (SIC) - (5<sup>th</sup> Edition)**

Title of category	Major division	Division
Agriculture, hunting, forestry and fishing Agriculture, hunting and related services Forestry, logging and related services Fishing, operation of fish hatcheries and fish farms	1	11 12 13
Mining and quarrying Mining of coal and lignite Extraction of crude petroleum and natural gas; service activities incidental to oil and gas extraction, excluding surveying Mining of gold and uranium ore Mining of metal ores, except gold and uranium Other mining and quarrying Service activities incidental to mining of minerals	2	21 22 23 24 25 29
Manufacturing Manufacture of food products, beverages and tobacco products Manufacture of textiles, clothing and leather goods Manufacture of wood and of products of wood and cork, except furniture; manufacture of articles of straw and plaiting materials; manufacture of paper and paper products; publishing, printing and reproduction of recorded media Manufacture of coke, refined petroleum products and nuclear fuel; manufacture of chemicals and chemical products; manufacture of rubber and plastic products Manufacture of other non-metallic mineral products Manufacture of basic metals, fabricated metal products, machinery and equipment and of office, accounting and computing machinery Manufacture of electrical machinery and apparatus n.e.c. Manufacture of radio, television and communication equipment and apparatus and of medical, precision and optical instruments, watches and clocks Manufacture of transport equipment Manufacture of furniture; manufacturing n.e.c.; recycling	3	30 31 32 33 34 35 36 37 38 39
Electricity, gas and water supply Electricity, gas, steam and hot water supply Collection, purification and distribution of water	4	41 42
Construction	5	
Wholesale, retail and motor trade; catering and accommodation Wholesale and commission trade, except of motor vehicles and motor cycles	6	61

**Table L - Standard Industrial Classification of All Economic Activities (SIC) - (5<sup>th</sup> Edition)  
(concluded)**

Title of category	Major division	Division
Retail trade, except of motor vehicles and motor cycles; repair of personal household goods		62
Sale, maintenance and repair of motor vehicles and motor cycles; retail trade in automotive fuel		63
Catering and accommodation		64
Transport, storage and communication	7	
Land transport; transport via pipelines		71
Water transport		72
Air transport		73
Supporting and auxiliary transport activities; activities of travel agencies		74
Post and telecommunications		75
Financial intermediation, insurance, real estate and business services	8	
Financial intermediation, except insurance and pension funding		81
Insurance and pension funding, except compulsory social security		82
Activities auxiliary to financial intermediation		83
Real estate activities		84
Renting of machinery and equipment, without operator, and of personal and household goods		85
Computer and related activities		86
Research and development		87
Other business activities		88
Community, social and personal services	9	
Public administration and defence activities		91
Education		92
Health and social work		93
Other community, social and personal service activities		94
Activities of membership organisations n.e.c.		95
Recreational, cultural and sporting activities		96
Other service activities		99
Private households, extraterritorial organisations, representatives of foreign governments and other activities not adequately defined	0	
Private households with employed persons		01
Extraterritorial organisations		02
Representatives of foreign governments		03
Other activities not adequately defined		04

### Classification of products

The supply and use tables allow for the comparison of statistics at a commodity level. The aggregated tables in this publication are based on a commodity classification that is closely linked to the generally expected output of a specific industry, and therefore follows the SIC closely. Table M provides a key between the commodity group and the SIC-code that would generally be the principal producer of the commodity.

**Table M – Classification of commodities used in supply and use tables**

<b>Supply and Use Table</b>	<b>CPC</b>	<b>CPC Description</b>
Agriculture, forestry, fishing	<b>01 – 04</b>	Agriculture, forestry and fishery products
Ores, minerals, electricity, water	<b>11 – 18</b>	Ores and minerals; electricity, gas and water
Food, beverage, textile, apparel	<b>211 – 293</b>	Food products, beverages and tobacco; textiles, apparel and leather products
Wood, chemical, non-metallic	<b>31 – 39</b>	Other transportable goods, except metal products, machinery and equipment
Metal, machinery, equipment	<b>411 – 499</b>	Metal products, machinery and equipment
Construction	<b>53 – 54</b>	Constructions and construction services
Trade, transport, distribution	<b>61 – 692</b>	Distributive trade services; accommodation, food and beverage serving services; transport services; and electricity, gas and water distribution services
Financial, real estate, leasing	<b>711 – 73</b>	Financial and related services; real estate services; and rental and leasing services
Business, production services	<b>81 – 89</b>	Business and production services
Community, social, personal	<b>91 – 95</b>	Community, social and personal services

**Data sources**

Table N summarises the most important statistical sources from which the benchmarked, annual, regional and quarterly estimates of value added and GDP are derived. The estimates are made at both current and constant prices.

**Table N - Statistical sources used in estimating benchmark, annual and quarterly value added and GDP**

Industry	Nominal estimates	Real estimates
Cross industry	<p>Benchmark/annual</p> <p>Unless stated otherwise, the estimation of benchmark and annual estimates is based on the Annual Financial Statistics and periodic large sample surveys conducted by Stats SA. The information is evaluated in a series of annual supply and use tables for internal consistency.</p> <p>Regional</p> <p>A mixture between “bottom-up” and “top-down” approaches is used in the compilation of the estimates (cf. methodological notes). “Bottom-up” data sources include the results of large sample surveys and information from large role-players in a sector, e.g. Telkom. “Top-down” sources are distribution keys based on population census results, employment data, administrative data etc.</p> <p>Quarterly</p> <p>Unless stated otherwise, labour remuneration is extrapolated according to the quarterly survey of employment and earnings conducted by Stats SA. Information from the quarterly financial survey is used where applicable.</p>	<p>Benchmark/annual</p> <p>Unless stated otherwise the constant estimates are derived from the nominal estimates developed in the supply and use framework and double-deflated with suitable price indices. The output and cost structures from the nominal estimates inform the relative weights used to develop the required composite price indicators.</p> <p>Regional</p> <p>Unless stated otherwise, the national deflator for the specific industry is used to derive the real estimates.</p> <p>Quarterly</p> <p>Various price indices are used to derive estimates at constant prices from the nominal estimates. Extrapolation of estimates is done through short-term indicators where available.</p>
	<p>Non-observed economy</p> <p>Information was obtained from administrative and enforcement records of the South African Police Service (SAPS), South African Revenue Service (SARS), other associations (e.g. SWEAT for prostitution) and information on other country experiences.</p> <p>Estimates on housing stock and rental values were obtained from the 2007 Community Survey, 2005/6 Income and Expenditure survey and 2005 General Household Survey.</p> <p>Informal sector estimates were based on the Survey of Employers and Self-employed 2004 as well as the Labour Force Survey.</p>	<p>Non-observed economy</p> <p>Various price indices are used to derive estimates at constant prices from the nominal estimates. Extrapolation of estimates is done through short-term indicators where available.</p>



**Table N - Statistical sources used in estimating benchmark, annual and quarterly value added and GDP (continued)**

<p>Agriculture, forestry and fishing (SIC 1)</p>	<p>Benchmark/annual The census of commercial agriculture 2007, conducted by Stats SA on behalf of the Department of Agriculture, Forestry and Fishing (DAFF), was used.</p> <p>Regional Selected variables are supplied by the DAFF on a provincial level to use as distribution keys.</p> <p>Quarterly Quarterly information on the value of crops, animal products and related expenditure is sourced from the DAFF</p>	<p>Quarterly Relevant price indices are provide by the DAFF on a quarterly basis.</p>
<p>Mining and quarrying (SIC 2)</p>	<p>Benchmark/annual Mining 2004 large sample survey data published by Stats SA. Supplemented by gold mining industry information from the Chamber of Mines and information from the Department of Mineral Resources (DMR).</p> <p>Regional Information for distribution keys sourced from the DMR and Chamber of Mines.</p> <p>Quarterly Monthly data on production and sales for the various sectors of the mining industry as published by Stats SA. Estimates of the gold mining industry are supplemented with information from the Chamber of Mines.</p>	<p>Quarterly Monthly data on production and sales for the various sectors of the mining industry as published by Stats SA. Estimates of the gold mining industry are supplemented with information from the Chamber of Mines.</p>
<p>Manufacturing (SIC 3)</p>	<p>Benchmark/annual Manufacturing 2005 large sample survey data published by Stats SA.</p> <p>Regional Similar to the data sources for annual estimates.</p> <p>Quarterly Monthly statistics on production and sales for the various sectors of the manufacturing industry as published by Stats SA.</p>	<p>Quarterly Monthly statistics on production and sales for the various sectors of the manufacturing industry as published by Stats SA.</p>

**Table N - Statistical sources used in estimating benchmark, annual and quarterly value added and GDP (continued)**

<p>Electricity, gas and water (SIC 4)</p>	<p>Benchmark/annual                      Electricity, gas and water 2006 large sample survey data published by Stats SA.                      Estimates are supplemented by annual reports from ESKOM, a number of water boards and local government statistics.                      Regional                      Information used as distribution keys is provided by ESKOM and local authorities.                      Quarterly                      Real estimates are inflated with relevant producer price indices.</p>	<p>Quarterly                      Monthly statistics regarding generation and consumption of electricity published by Stats SA.</p>
<p>Construction (SIC 5)</p>	<p>Benchmark/annual                      Construction 2004 large sample survey data published by Stats SA.                      Benchmark year estimates are extrapolated according to the trend in gross domestic fixed investment of residential and non-residential buildings and construction works as compiled by the SARB.                      Regional                      Distribution keys are developed from building statistics published by Stats SA as well as information obtained on the sale of building materials, i.e. cement.                      Quarterly                      Information based on the trend in gross domestic fixed investment of residential and non-residential buildings and construction works as compiled by the SARB.</p>	<p>Quarterly                      Monthly statistics regarding building plans passed and approved as published by Stats SA.</p>
<p>Wholesale, retail and motor trade; catering and accommodation (SIC 6)</p>	<p>Benchmark/annual                      Wholesale and Retail trade 2005; Motor trade 2006 and Accommodation 2004 large sample surveys conducted by Stats SA.                      Regional                      Similar to the data sources used for the annual estimates.                      Quarterly                      Monthly trade sales statistics covering wholesale, retail &amp; motor trade published by Stats SA.</p>	

**Table N - Statistical sources used in estimating benchmark, annual and quarterly value added and GDP (continued)**

<p>Transport, storage and communication (SIC 7)</p>	<p>Benchmark/annual</p> <p>Financial statements of major role players such as Transnet, Telkom and South African Post Office.</p> <p>Studies by research institutions on relevant sub-industries e.g. the taxi industry.</p> <p>Transport and communication 2006 large sample surveys conducted by Stats SA.</p> <p>Regional</p> <p>Similar to the data sources for annual estimates</p> <p>Quarterly</p> <p>Real estimates are inflated with relevant producer price indices and implied indices</p>	<p>Quarterly</p> <p>Monthly volume indicators information collected from the major role players in each sub industry as collected by Stats SA.</p>
<p>Financial intermediation, real estate and business services (SIC 8)</p>	<p>Benchmark/annual</p> <p>Business Services 2006 large sample survey data published by Stats SA.</p> <p>Statistics from the 2001 population census and the annual General Household surveys are used in conjunction with information and estimates from the SARB.</p> <p>Regional</p> <p>Similar to the data sources for annual estimate</p> <p>Quarterly</p> <p>Information and estimates from the SARB, as well as trends in related aggregates such as private consumption expenditure.</p>	<p>Benchmark/annual</p> <p>Information and estimates from the SARB.</p> <p>Quarterly</p> <p>Information and estimates from the SARB, as well as trends in related aggregates such as private consumption expenditure.</p>
<p>General government (SIC 91)</p>	<p>Benchmark/annual</p> <p>Stat SA conducts a number of surveys on the three tiers of government that are used to derive the estimates. They are supplemented with information from the SARB.</p> <p>Regional</p> <p>Similar to the data sources for annual estimate.</p> <p>Quarterly</p> <p>Real estimates are inflated with relevant implied indices.</p>	<p>Quarterly</p> <p>Quarterly information from the quarterly employment survey conducted by Stats SA.</p>

**Table N - Statistical sources used in estimating benchmark, annual and quarterly value added and GDP (concluded)**

<p>Personal services (SIC 9, excl SIC 91)</p>	<p>Benchmark/annual Personal Services 2004 large sample survey data published by Stats SA.</p> <p>Regional Information of distribution keys is sourced from the 2001 population census and the General Household Survey.</p> <p>Quarterly Estimates are extrapolated using relevant items of the private consumption expenditure as estimated by the SARB.</p>	<p>Quarterly Employment estimates in the domestic services industry.</p>
---	--	--

## Glossary

Table O describes and defines relevant national accounting and other terms used in this publication.

**Table O - Glossary of statistical sources used in estimating benchmark, annual and quarterly value added and GDP**

Term	Description
Ancillary activity	An ancillary activity is a supporting activity undertaken to create the conditions within which the activities of an enterprise are carried out.
Annualised percentage change	The annualised percentage change is the growth rate of a given quarter compared with the previous quarter, compounded to an annual rate.
Balancing items	A balancing item is an accounting construct obtained by subtracting the total value of the entries on one side of an account from the total value of the entries on the other side. Balancing items are not simply devices introduced to ensure that accounts balance. They encapsulate a great deal of information and include some of the most important entries in the accounts, for example value added and operating surplus.
Basic prices	The basic price is the amount receivable by the producer from the purchaser for a unit of a good or service produced as output minus any tax payable plus any subsidy receivable on that unit as a consequence of its production or sale. Basic prices exclude any transport charges invoiced separately by the producer. Basic prices is the preferred method of valuing output.
Benchmark years	Benchmark years refer to those years in respect of which authoritative and detailed data are available.
Commodity flow method	The commodity flow method is used to track the flow of goods and services from the supply (domestic production or imported) to the use (intermediate consumption, final consumption or exports) thereof.
Compensation of employees	Compensation of employees is defined as the total remuneration, in cash or in kind, payable by an employer to an employee in return for work done by the latter during the accounting period. It is recorded on a gross basis, before any deduction for income taxes, pensions, unemployment insurance and other social insurance schemes. It also includes other forms of compensation, namely commissions, tips, bonuses, directors' fees and allowances such as these for holidays and sick leave, as well as military pay and allowances. It excludes employers' social contributions.
Constant prices	Constant price is a valuation concept expressed at the prices prevailing during a fixed reference period or base period. The base period for national accounts estimates at constant prices is 2005, which means that they have been restated at 2005 prices.
Consumer price index (CPI)	An index that measures the prices of a fixed basket of consumer goods and services.
Current prices	A valuation at current prices is expressed at the prices prevailing during the period being referred to.

**Table O - Glossary of statistical sources used in estimating benchmark, annual and quarterly value added and GDP (continued)**

Cost, insurance and freight price	The cost, insurance and freight price (c.i.f.) is the price of a good delivered at the frontier of the importing country, or the price of a service delivered to a resident, before payment of any import duties or other taxes on imports or trade and transport margins within the country.
Enterprise	An enterprise may be a corporation (a quasi-corporate enterprise is treated as if it is a corporation in the SNA), a non-profit institution or an unincorporated enterprise. Corporate enterprises and non-profit institutions are complete institutional units. An unincorporated enterprise, however, refers to an institutional unit – a household or government unit – only in its capacity as a producer of goods and services. It covers only those activities of the unit which are directed towards the production of goods and services.
Establishment	An establishment is defined as an enterprise or part of an enterprise that is situated at a single location and in which only a single (non-ancillary) productive activity is carried out or in which the principal productive activity accounts for most of the value added.
Factor cost	Factor cost is a valuation reflecting the cost of the factors of production (labour and capital). It corresponds to the value remaining after all applicable taxes and subsidies have been deducted from market prices.
Final demand	Different components of final demand are distinguished in the SU-tables. The supply table shows imports and the use table shows final consumption expenditure by households and the general government as well as gross capital formation (gross fixed capital formation and changes in inventories) and exports.
Financial services indirectly measured	Financial services indirectly measured (FSIM) is measured in the SNA as the total property income receivable by financial intermediaries minus their total interest payable, excluding the value of any property income receivable from the investment of their own funds. Therefore, income does not arise from financial intermediation.
Free on board price	The free on board price (f.o.b.) is the purchaser's price paid by an importer taking delivery of goods at the exporter's frontier after loading on to a carrier and after payment of any export taxes or the receipt of any tax rebates.
GDP at market prices	GDP at market prices equals total gross value added by all industries at basic prices plus taxes on products minus subsidies on products.
GDP for the economy	GDP for the entire economy is equal to GDP at market prices. It is essentially a production measure as it is obtained through the sum of the gross values added of all resident institutional units, in their capacity as producers, <i>plus</i> the values of any taxes, <i>less</i> subsidies, on production or imports not already included in the values of the outputs and values added by resident producers.
GDP per region (GDPR)	GDPR at market prices equals the sum of gross value added by all industries at basic prices plus taxes on products minus subsidies on products in a region.
Generation of income account	The generation of income account provides for the distribution of primary incomes to the various institutional sectors. Primary incomes are incomes that accrue to institutional sectors and industries as a consequence of their involvement in processes of production or ownership of assets that may be needed for purposes of production.

**Table O - Glossary of statistical sources used in estimating benchmark, annual and quarterly value added and GDP (continued)**

Goods and services account	The goods and services account shows the total resources (output and imports) and uses of goods and services (intermediate consumption, final consumption, gross capital formation and exports). Taxes on products (less subsidies) are also included on the resource side of the accounts.
Gross operating surplus/Mixed income	Gross operating surplus or mixed income is the balancing item in the generation of income account, i.e. the value added <i>minus</i> compensation of employees payable <i>minus</i> taxes on production payable <i>plus</i> subsidies receivable.
Gross value added at basic prices	Gross value added at basic prices is defined as output valued at basic prices less intermediate consumption valued at purchasers' prices.
Gross value added at producer's prices	Gross value added at producers' prices is defined as output valued at producers' prices less intermediate consumption valued at purchasers' prices.
Homogeneous production	A unit of homogeneous production is defined as a producer unit in which only a single (non-ancillary) productive activity is carried out.
Illegal economy	The illegal economy is the activities in the resale, distribution or ownership of goods and services forbidden by law and legal activities carried out by unauthorised producers.
Implied deflator	Implied deflators are also known as variable-weighted or "Paasche" indices (although not strictly of the Paasche type). These price indices are a by-product of the deflation procedure, obtained by dividing a series (e.g. value added) expressed at current prices by the corresponding series at constant prices.
Industries	Industries are defined in the SNA in the same way as in the Standard Industrial Classification (SIC). An industry consists of a group of establishments engaged in the same or similar kinds of activity.
Informal economy	The informal economy is broadly characterised as consisting of units engaged in the production of goods or services with the primary objective of generating employment and incomes to the persons concerned. These units typically operate at a low level of organisation, with little or no division between labour and capital as factors of production and on a small scale.
Institutional unit	An institutional unit is an economic entity that is capable, in its own right, of owning assets, incurring liabilities and engaging in economic activities and in transactions with other entities.
Intermediate consumption	Intermediate consumption consists of the value of the goods and services consumed as inputs by a process of production, excluding fixed assets. Consumption of fixed assets is recorded as consumption of fixed capital.
Net other taxes on production	Other taxes on production minus other subsidies on production.
Non-observed economy	The non-observed economy is the extent of the economic activity missing from statistical data collections and from administrative sources.

**Table O - Glossary of statistical sources used in estimating benchmark, annual and quarterly value added and GDP (continued)**

Operating surplus or mixed income	Operating surplus or mixed income is the balancing item in the generation of income account, i.e. the value added minus compensation of employees payable minus taxes on production payable plus subsidies receivable.
Other subsidies on production	Subsidies are transfers from the government to the business sector toward the current cost of production. These transfers represent additions to the income of producers from current production.
Other taxes on production	Other taxes on production consist of taxes on the ownership of land, buildings or other assets used in production or on labour employed, etc. Important examples of other taxes on production are taxes on payroll or work force, stamp duties, business or professional licences, etc.
Output	Output is defined in the context of a production account. Production accounts are compiled for establishments or enterprises, and not for processes of production. Therefore, output consists only of those goods or services that are produced within an establishment that become available for use outside that establishment.
Percentage change	The percentage change in a variable from one period to another is its change in value (value in the second period less its value in the first period) divided by its value in the first period, multiplied by 100. Growth in GDP is usually measured by its percentage change.
Primary industries	The primary industries include the agriculture, forestry and fishing industry and the mining and quarrying industries.
Principal activity	The principal activity of an establishment is the activity whose gross value added exceeds that of any other activity carried out within the same unit.
Producer price index (PPI)	The producer price index indicates changes in producer prices of locally produced commodities (including exports).
Producer's price	The producer's price is the amount receivable by the producer from the purchaser for a unit of a good or service produced as output minus any VAT, or similar deductible tax, invoiced to the purchaser. It excludes any transport charges invoiced separately by the producer.
Production boundary	The general production boundary is defined as an economic activity (or production) carried out under the control and responsibility of an institutional unit that uses inputs of labour, capital and goods and services to produce output of goods and services. The production boundary in the 1993 SNA is more restricted than the general production boundary due to the production accounts not being compiled for household activities that produce domestic or personal services for own final consumption within the same household, except for services produced by paid domestic staff.
Production account for the total economy	The production account is the first in the sequence of accounts compiled for institutional sectors, industries and the total economy. The production account contains three items apart from the balancing item, namely output, intermediate consumption and taxes less subsidies on products. The output is recorded under resources on the right-hand side of the account. Intermediate consumption and taxes less subsidies on products is recorded under uses on the left-hand side of the account.



**Table O - Glossary of statistical sources used in estimating benchmark, annual and quarterly value added and GDP (continued)**

Purchaser's price	The purchaser's price is the amount paid by the purchaser, excluding any deductible value added tax (VAT) or similar deductible tax, in order to take delivery of a unit of a good or service at the time and place required by the purchaser. The purchaser's price of a good includes any transport charges paid separately by the purchaser to take delivery at the required time and place.
Region	A region for GDP estimates per region is defined as a province.
Revision of estimates	Revision of the estimates for all components of the national accounts is usually done every five years in conjunction with the rebasing of the estimates at constant prices apart from the revision of estimates for the latest quarters. At such a time the results of surveys that have become available in the meantime and any other additional information sources are incorporated in the estimates.
Secondary activity	A secondary activity is an activity carried out within a single establishment in addition to the principal activity.
Secondary industries	The secondary industries include the manufacturing, electricity, water and construction industries.
Subsidies	Subsidies are transfers from the government to the business sector towards the current cost of production. These transfers represent additions to the income of producers from current production.
Subsidies on products	Subsidies on products are payable per unit of a good or service.
Supply and use tables	The SU-tables are sometimes referred to as rectangular input-output tables, make and use tables, supply and disposition of commodities tables.
Supply table	The supply table gives information about the resources of goods and services.
Symmetric	Symmetric tables use similar classifications or units, i.e. same groups of products for both the rows and the columns.
System of National Accounts	System of National Accounts (SNA) refers to an internationally-agreed standard system for macro-economic accounts. The latest version is described in the System of National Accounts 2008, although South Africa still uses SNA 1993.
Taxes on production and imports	Taxes on production and imports are taxes which add to the cost of production and which are likely to be reflected in market prices paid by the purchaser, such as sales and excise taxes, import duties and property taxes. Taxes on production and imports include taxes on products and other taxes on production.
Taxes on products	Taxes on products consist of taxes payable on goods and services when they are produced, delivered, sold or otherwise disposed of by their producers. Furthermore, they are payable per unit of a good or service produced. Important examples of taxes on products are excise and import duties and value added tax (VAT).

**Table O - Glossary of statistical sources used in estimating benchmark, annual and quarterly value added and GDP (concluded)**

Underground economy	The underground economy includes activities that may be both productive in an economic sense and also quite legal but deliberately concealed from public authorities to avoid the payment of taxes, payment of social security contributions, meeting certain legal standards or complying with certain administrative procedures.
Use table	The use table gives information on the uses of goods and services, and also on cost structures of the industries.
Value added components	The use table distinguishes between three different components of value added, i.e. compensation of employees, other taxes less subsidies on production and gross operating surplus/mixed income.
Tertiary industries	Tertiary industries include wholesale, retail and motor trade, catering and accommodation, transport, storage and communication, finance, real estate and business services, community, social and personal services, general government services, and other producers.
Value added by industry	Value added measures the value created by production and may be calculated either before or after deducting the consumption of fixed capital from the fixed assets used. Gross value added is defined as the value of output less the value of intermediate consumption. Value added is the balancing item in the production account for an institutional unit or sector, or establishment or industry.

## General information

Stats SA publishes approximately 300 different statistical releases each year. It is not economically viable to produce them in more than one of South Africa's eleven official languages. Since the releases are used extensively, not only locally but also by international economic and social-scientific communities, Stats SA releases are published in English only.

Stats SA has copyright on this publication. Users may apply the information as they wish, provided that they acknowledge Stats SA as the source of the basic data wherever they process, apply, utilise, publish or distribute the data; and also that they specify that the relevant application and analysis (where applicable) result from their own processing of the data.

### Advance release calendar

An advance release calendar is disseminated on [www.statssa.gov.za](http://www.statssa.gov.za)

### Stats SA products

A complete set of Stats SA publications is available at the Stats SA Library and the following libraries:

National Library of South Africa, Pretoria Division  
National Library of South Africa, Cape Town Division  
Natal Society Library, Pietermaritzburg  
Library of Parliament, Cape Town  
Bloemfontein Public Library  
Johannesburg Public Library  
Eastern Cape Library Services, King William's Town  
Central Regional Library, Polokwane  
Central Reference Library, Nelspruit  
Central Reference Collection, Kimberley  
Central Reference Library, Mmabatho

Stats SA also provides a subscription service.

### Electronic services

A large range of data are available via on-line services, diskette and computer printouts. For more details about our electronic data services, contact (012) 310 8600/8390/8351/4892/8496/8095.

You can visit us on the internet at: [www.statssa.gov.za](http://www.statssa.gov.za)

### Enquiries

Telephone number: (012) 310 8600/8390/8351/4892/8496/8095 (user information services)  
(012) 310 8241 (technical enquiries)  
(012) 310 8161 (orders)  
(012) 310 8490 (library)

Fax number: (012) 310 8304 (technical enquiries)

Email address: Gerhardb@statssa.gov.za (technical enquiries)  
Info@statssa.gov.za (user information services)  
distribution@statssa.gov.za (orders)

Postal address: Private Bag X44, Pretoria, 0001

*Produced by Stats SA*